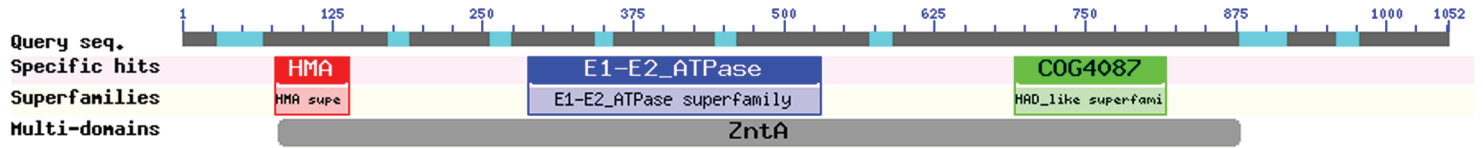


Additional file 6

Esi0023_0054



Additional file 6. Summary of features observed in the putative *E. siliculosus* Cu induced heavy metal P1B-ATPase (Esi0023_0054). This sequence contains conserved heavy metal-associated (HMA), E1-E2 ATPase superfamily and haloacid dehalogenase (HAD) domains. The diagram was obtained by amino acid sequence analysis based on the Conserved Domains and Protein Classification Database.