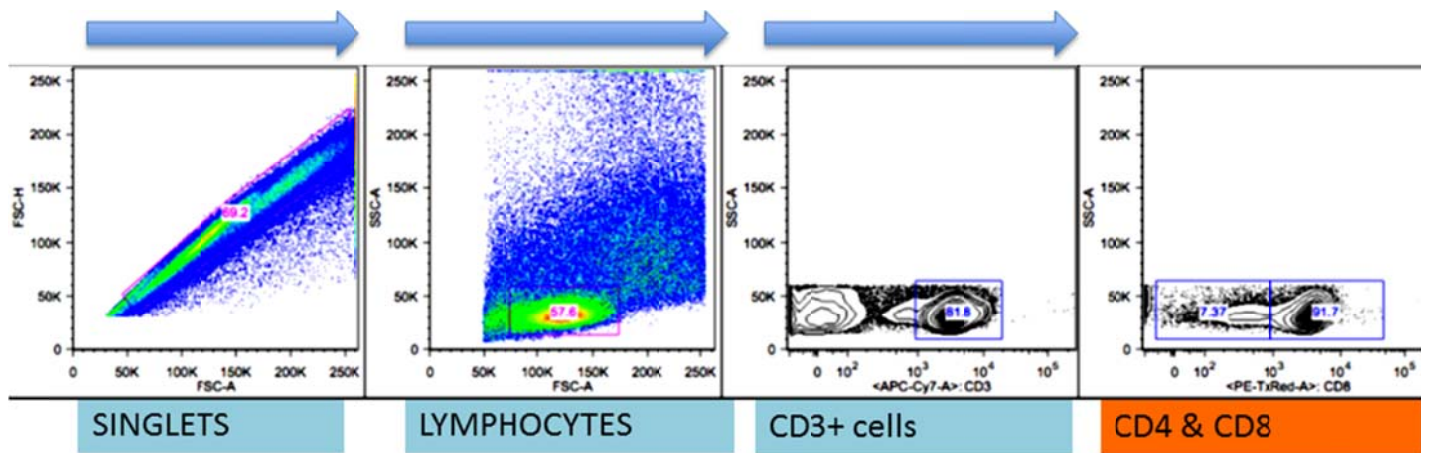


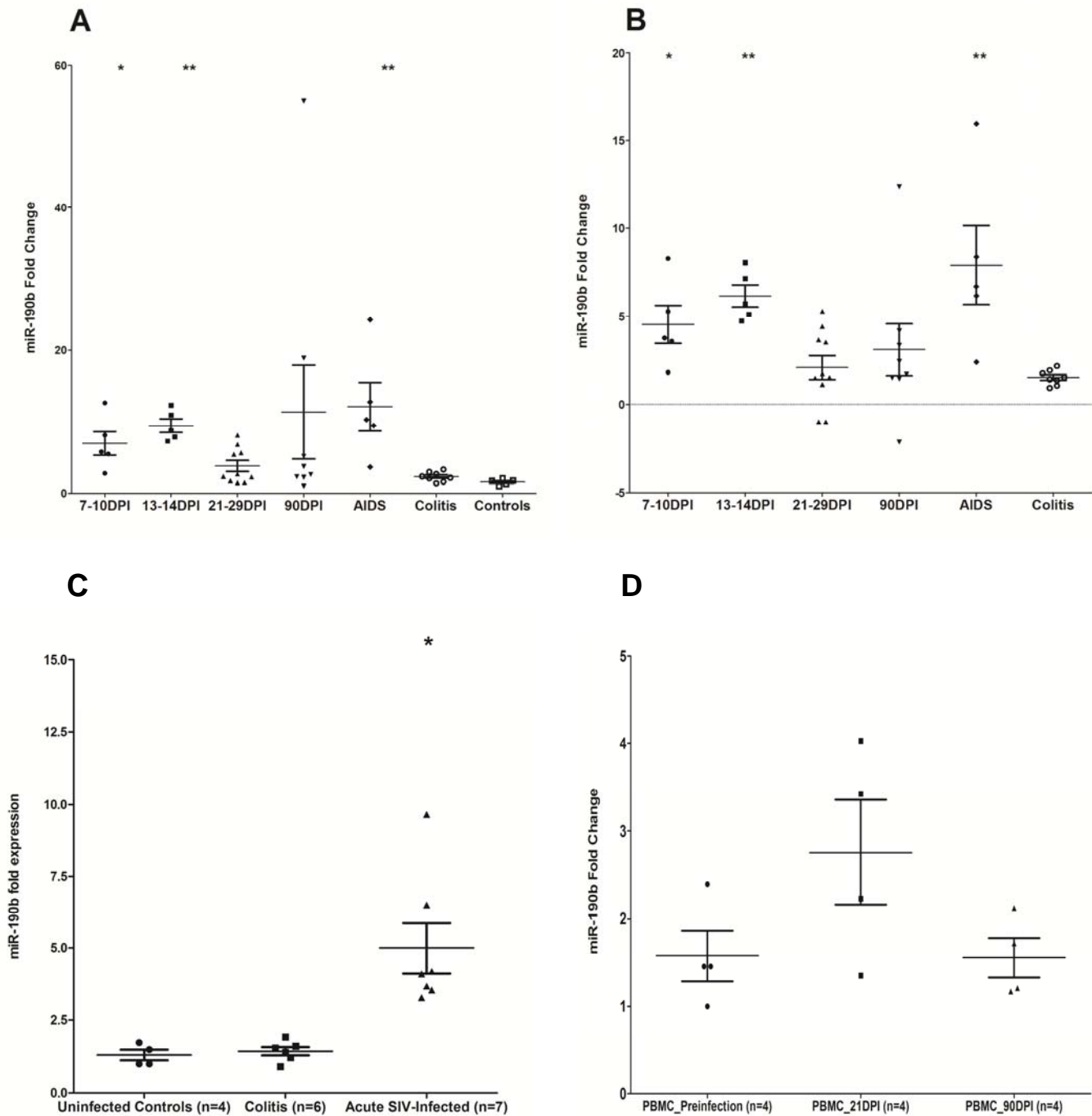
	Acute SIV-Infected (7-14DPI) (n=7)							Non-SIV-infected with Diarrhea (Colitis) (n=6)						Uninfected Controls (n=4)			
	HI52	HI58	HI63	M992	IA85	AV91	HT44	JM89	IL72	EH96	JD55	JD48	FR72	FF15	FT23	EL66	HT22
miR-190b	22.7 22.5	22.62 22.46	21.92 21.81	22.87 22.75	20.8 20.67	21.9 22.03	23.07 22.87	23.9 23.9	23.98 24.08	24.26 24.05	24.05 23.63	24.43 24.58	24.61 24.45	24.16 24.13	24.7 24.9	24.49 24.3	23.89 23.86
Mean C_T	22.6	22.54	21.86	22.81	20.73	21.96	22.97	23.9	24.03	24.15	23.84	24.5	24.53	24.15	24.8	24.39	23.88
STDEV	0.136	0.116	0.077	0.088	0.094	0.09	0.143	0.03	0.073	0.151	0.293	0.105	0.112	0.026	0.14	0.134	0.024
RNU48	15.32 14.52	14.78 14.58	15.23 15.53	14.79 14.77	13.75 13.62	14.19 14.32	15.03 15.08	15 14.6	15.44 15	15.3 14.88	14.79 14.34	15.1 14.99	14.89 14.4	15.14 15.23	15 15	15.4 15.05	14.17 14.09
Mean C_T	14.92	14.68	15.38	14.78	13.69	14.26	15.05	14.8	15.22	15.09	14.57	15.05	14.64	15.19	15	15.22	14.13
STDEV	0.563	0.142	0.21	0.014	0.091	0.087	0.033	0.31	0.313	0.294	0.318	0.079	0.349	0.065	0.02	0.248	0.059
DC_T	7.677	7.865	6.48	8.03	7.047	7.706	7.92	9.12	8.806	9.063	9.27	9.457	9.886	8.961	9.74	9.17	9.748
DDC_T	-2.07	-1.88	-3.268	-1.72	-2.7	-2.04	-1.83	-0.63	-0.94	-0.68	-0.48	-0.29	0.138	-0.79	-0.01	-0.58	0
2^{-ΔΔC_T} (Fold Change)	4.201	3.689	9.633	3.29	6.502	4.117	3.551	1.54	1.922	1.607	1.393	1.224	0.909	1.726	1	1.493	1

	Acute SIV (n=7)	Colitis (n=6)	Controls (n=4)
Avg 190b C_T	22.21	24.16	24.295
Avg U48 C_T	14.68	14.89	14.889
DC_T	7.532	9.267	9.4055
DDC_T	-1.87	0.138	
2^{-ΔΔC_T}	3.664	0.909	

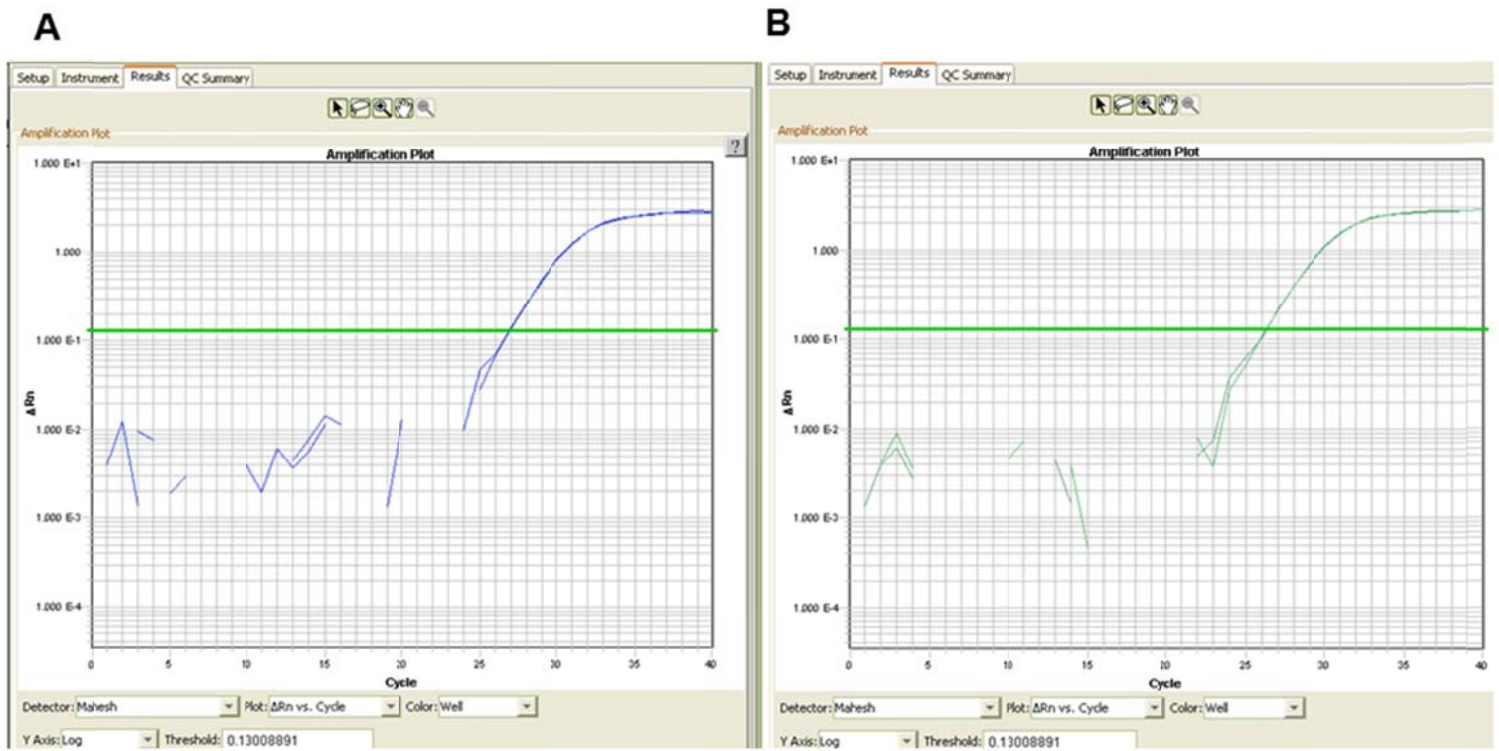
Supplemental table 1. miR-190b raw C_T values and fold change in acutely SIV-infected, Non-SIV-infected macaques with diarrhea and colitis and uninfected control macaques.



Supplemental figure 1. FACS plot showing gating strategy used for LPL analysis. 69.2% singlets, 57.6% lymphocytes, 82% CD3⁺ lymphocytes, 7% CD4⁺ T cells, 92% CD8⁺ T cells.



Supplemental figure 2. miR-190b fold change in the colon of SIV-infected macaques at 7-10, 13-14, 21-29, 90DPI and AIDS time points as well as uninfected macaques with and without colitis calculated relative to a single control macaque (**A**) versus average of all 5 control macaques (**B**). miR-190b expression is significantly elevated only in the colon of SIV-infected rhesus macaques (7-14DPI) and not in the newly harvested colon samples from 6 non-SIV-infected macaques with diarrhea and colitis (**C**). Data analysis using non-parametric Kruskal-Wallis test revealed differences among groups ($p < 0.0001$). Single asterisk (*) indicates statistical significance ($p < 0.05$) compared to uninfected controls and non-SIV-infected macaques with diarrhea and colitis following Dunn's multiple groups comparison test. The error bars represent standard error of mean fold change within each group. miR-190b expression levels in PBMCs collected at preinfection, 21 and 90DPI time points from 4 macaques (HC36, HB31, HF27, HB48) (**D**).



Supplemental figure 3. Amplification curves confirm expression of miR-190b in both uninfected viral target cells, namely, peripheral blood CD4⁺ T cells (**A**) and in vitro cultured primary intestinal macrophages (**B**) using ~100 ng of total RNA .