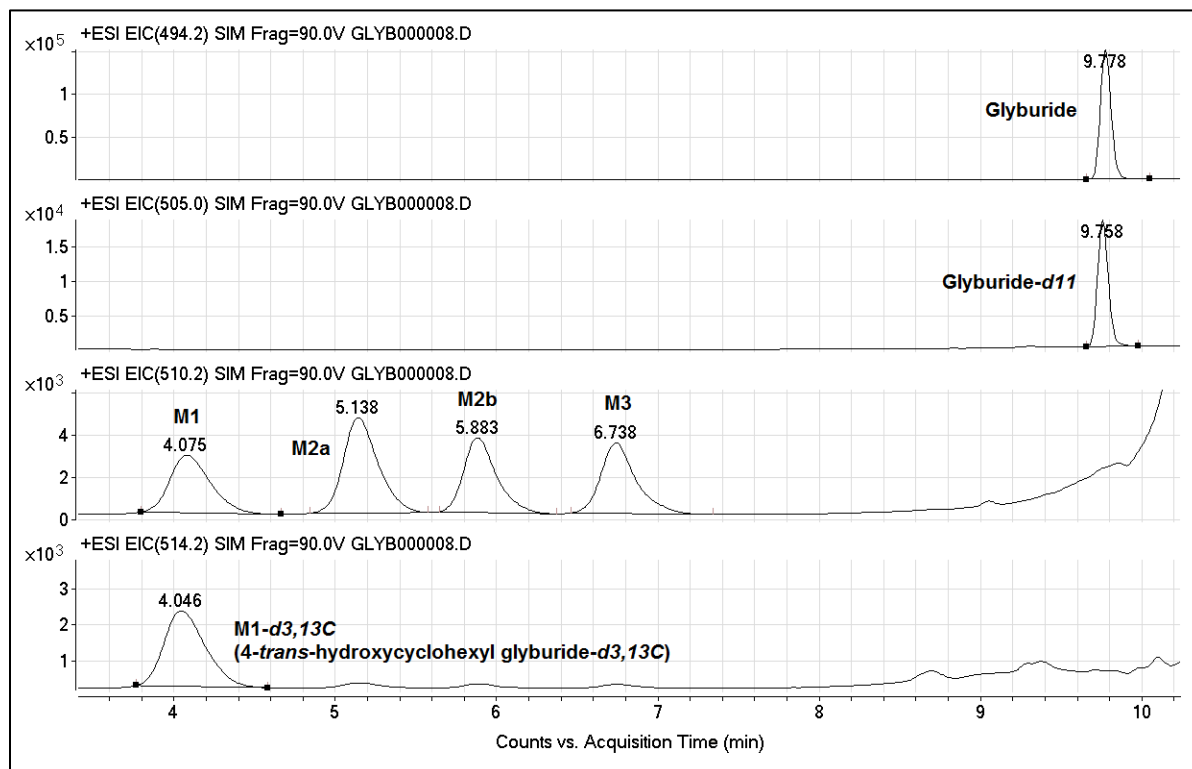


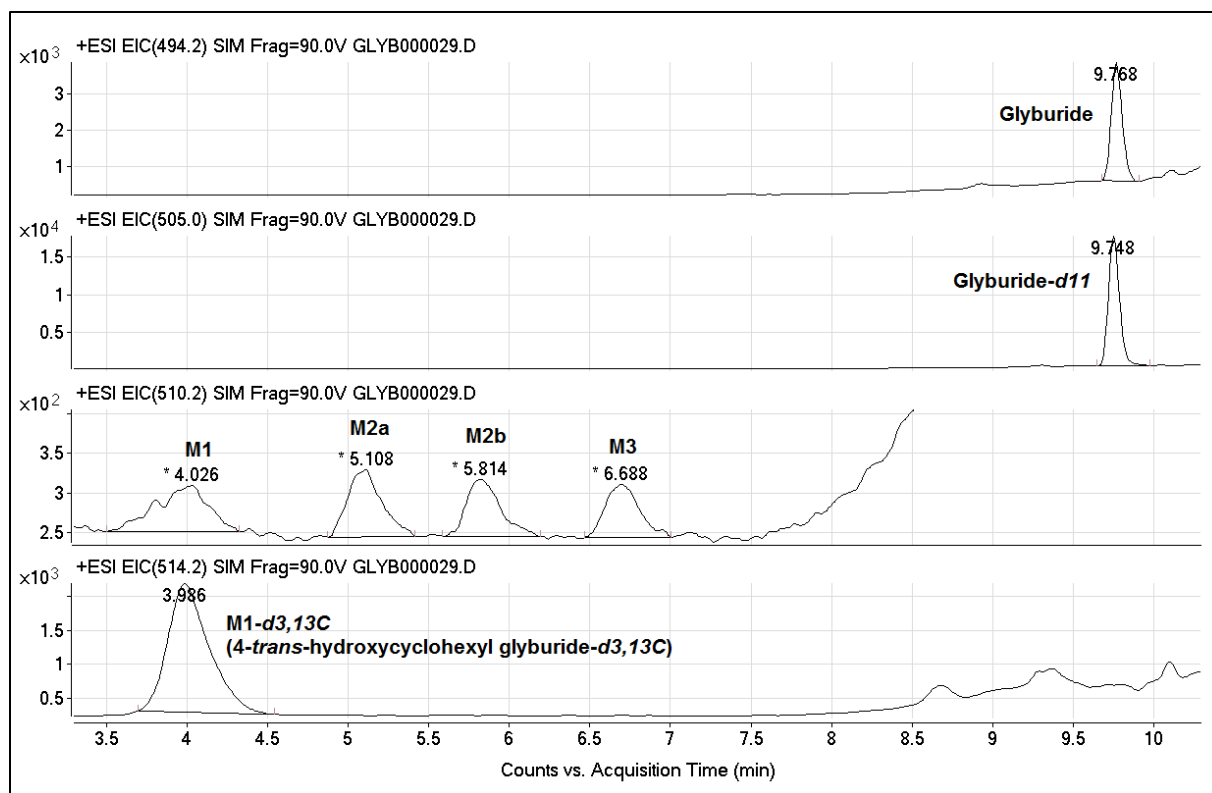
Maternal-Fetal Disposition of Glyburide in Pregnant Mice Is Dependent on Gestational Age

Diana L. Shuster, Linda J. Risler, Chao-Kang J. Liang, Kenneth M. Rice, Danny D. Shen, Mary F. Hebert, Kenneth E. Thummel, and Qingcheng Mao

Supplemental Figures:



Supplemental Figure 1. Extracted ion chromatograms (EICs) of glyburide, metabolites, and internal standards. EIC taken from highest calibration standard injection (corresponding to 4,000 ng/ml glyburide).



Supplemental Figure 2. Extracted ion chromatograms of glyburide, metabolites, and internal standards corresponding to lower limit of quantification (LLOQ). The LLOQ was 10 ng/ml glyburide and 1.2 ng/ml M1-M3.