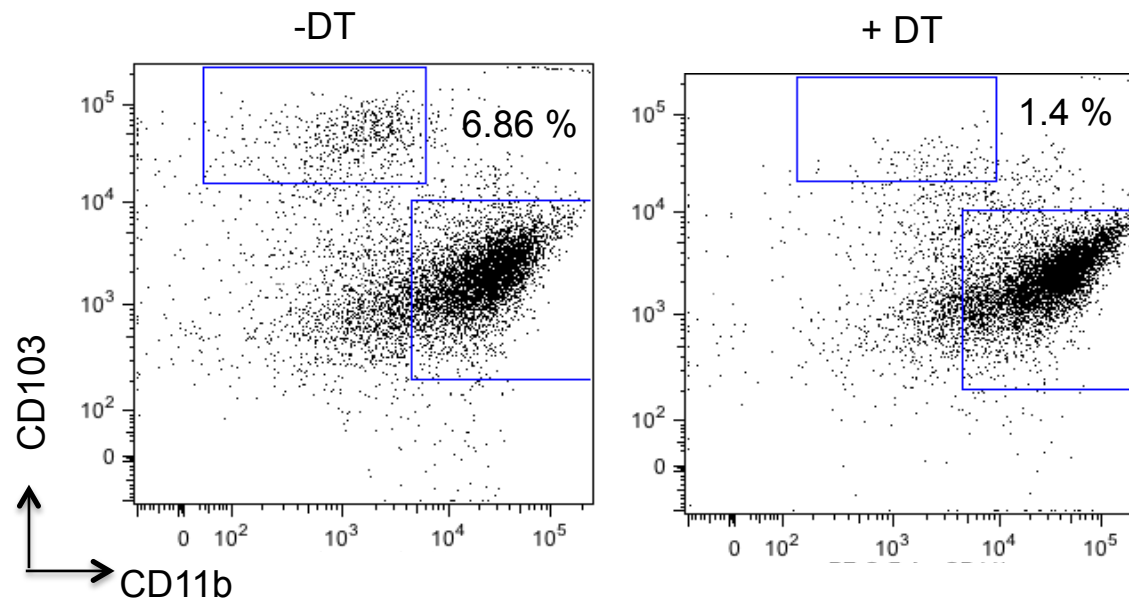


Suppl. Figure 1. Gating strategy respiratory DCs. DCs in the lungs were gated as CD11c⁺ MHC class II^{hi} SiglecF⁻ on the low side scatter as shown above. Cells were acquired in a FACS Canto II instrument.



Suppl. Figure 2. Efficiency of the depletion of Langerin⁺ cells in the lung. Fifty ng of DT was administered intranasally in 50 ml of PBS. Percentage of depletion is shown in CD11c⁺ MHC class II^{hi} CD103⁺ cells in the lung at day 3 post treatment.