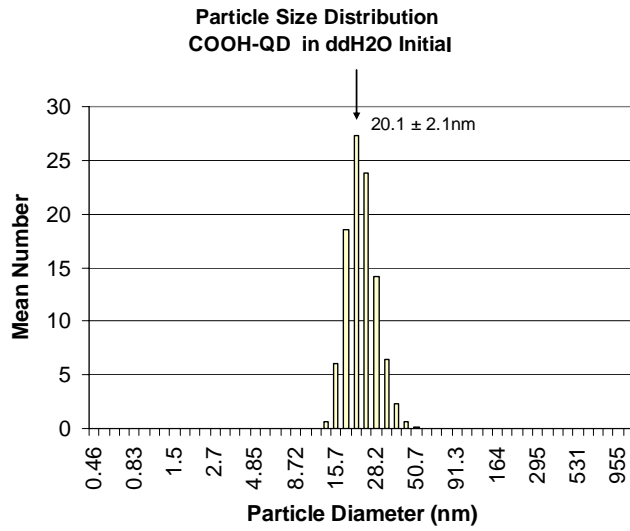
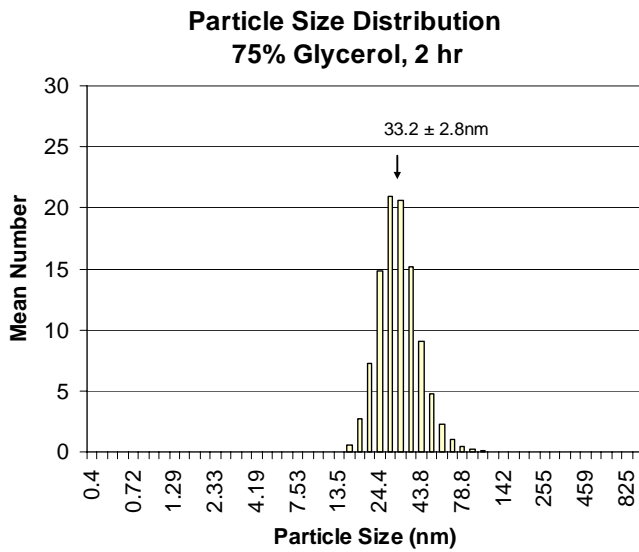


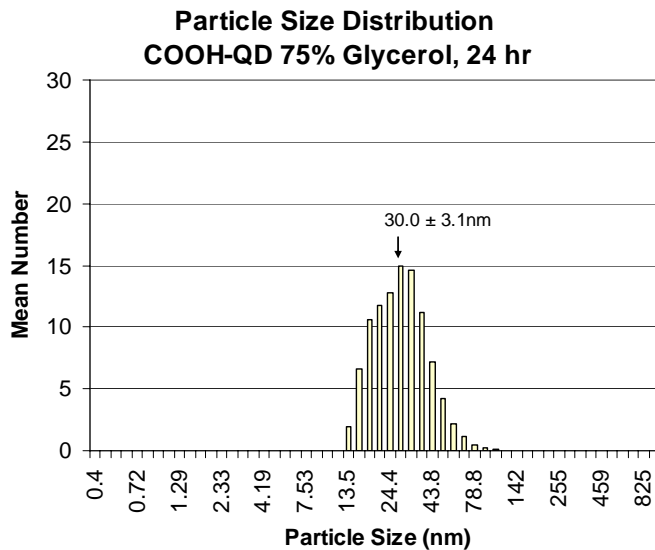
Fig. S1 Malvern particle size raw data scans of QD in (a) water, (b) 75% glycerol at 2 hr and (c) 75% glycerol at 24 hr stored at room temperature.



a.



b.



c.

Fig. S2 Epidermal thickness data post UVR exposure (8 and 24 hr) relative to control (no UVR).

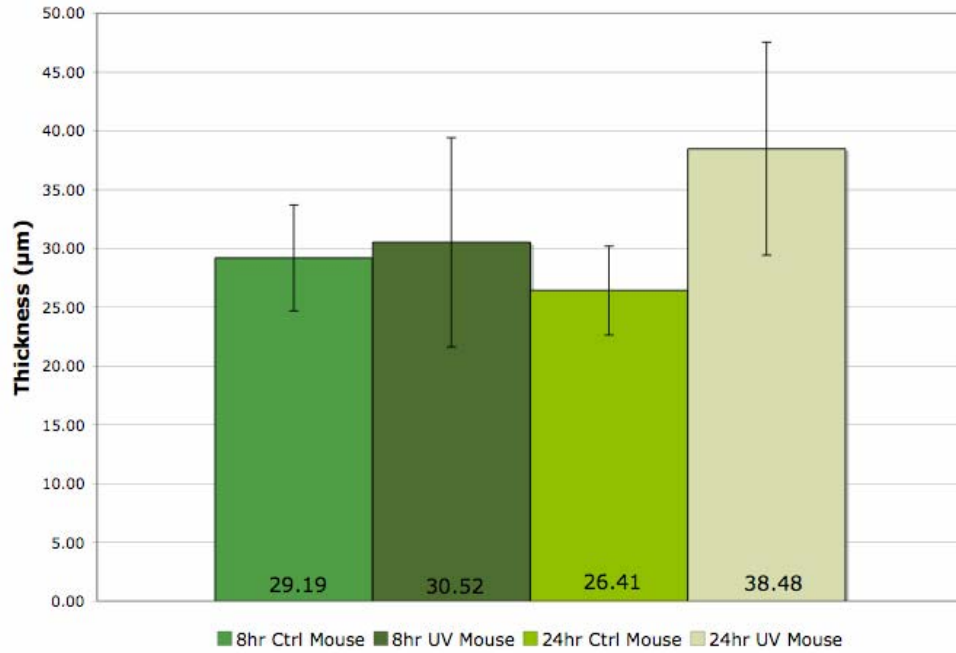


Fig. S3 Bright field image of thickened skin at 4.5 days post-UV

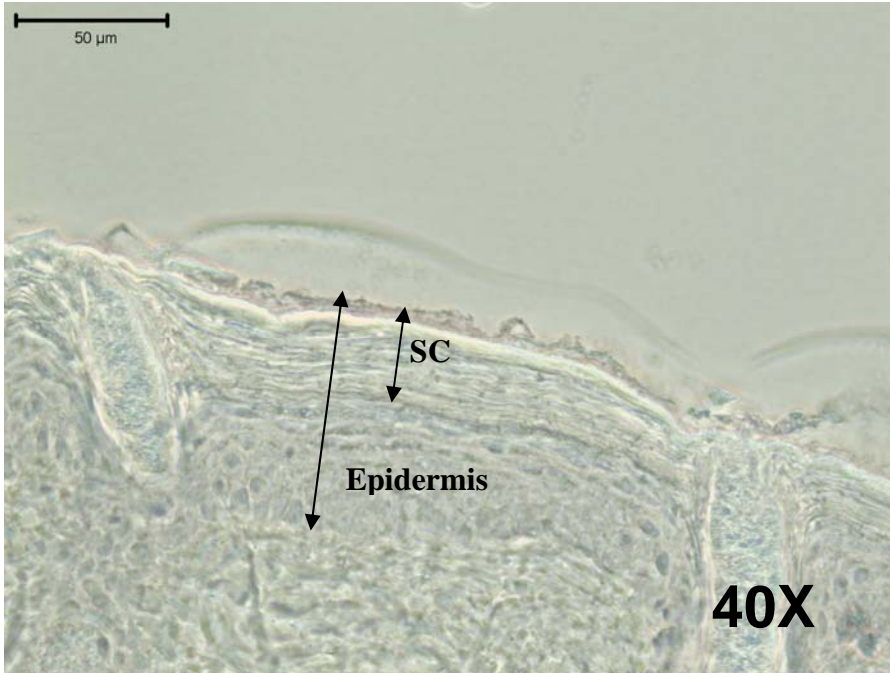


Fig. S4 Cyrohistology section for 8hr ctrl (no UVR) in bright field (left) with corresponding fluorescence image (right) showing QD collection in stratum corneum defects (arrows) . Dapi – blue cell nuclei stain. Red is Loricrin a SC protein.

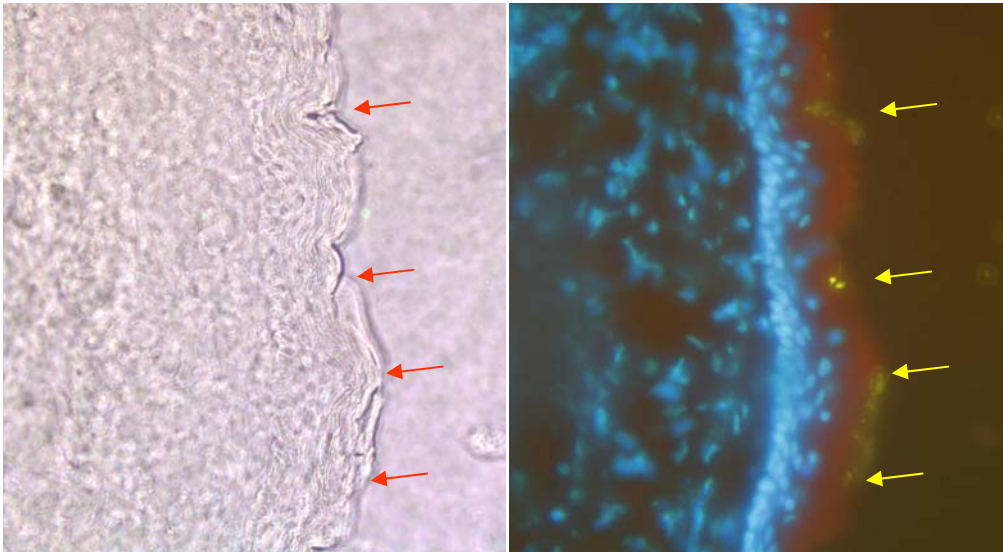


Fig. S5 Particle size as measured on TEM

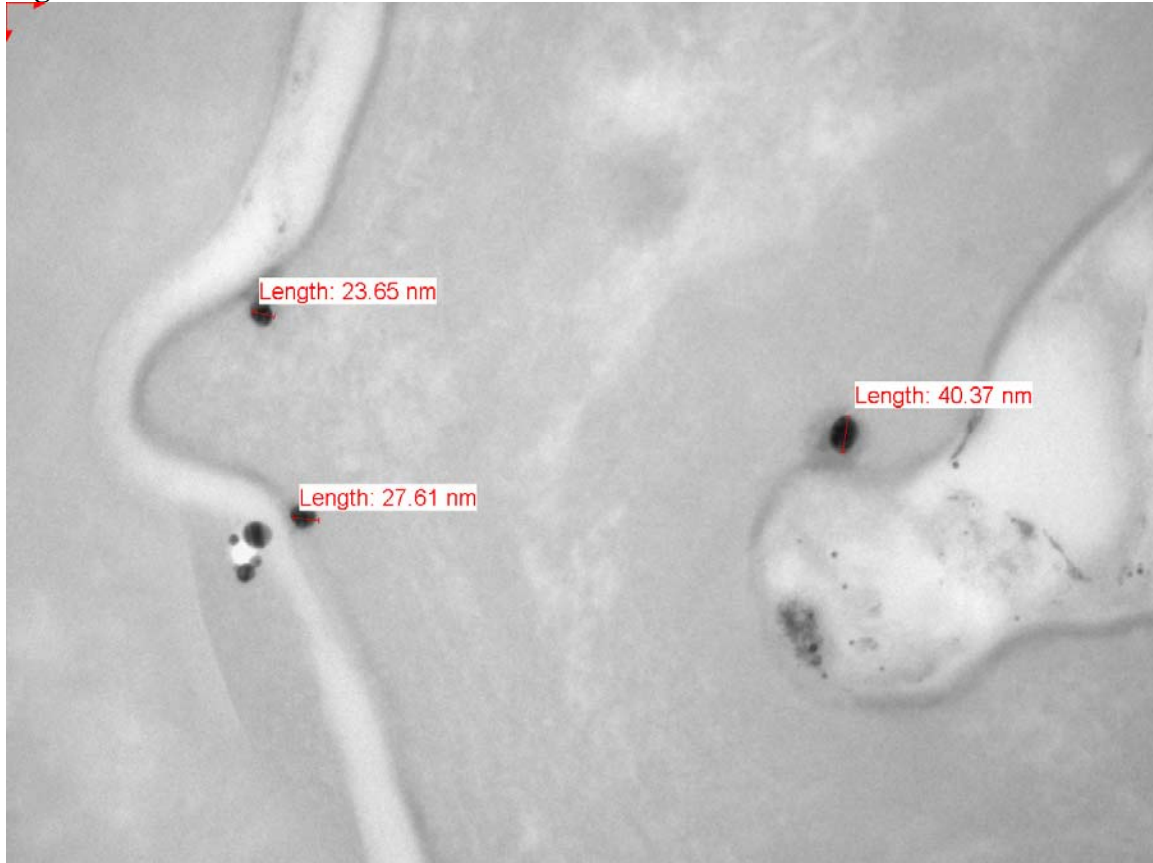
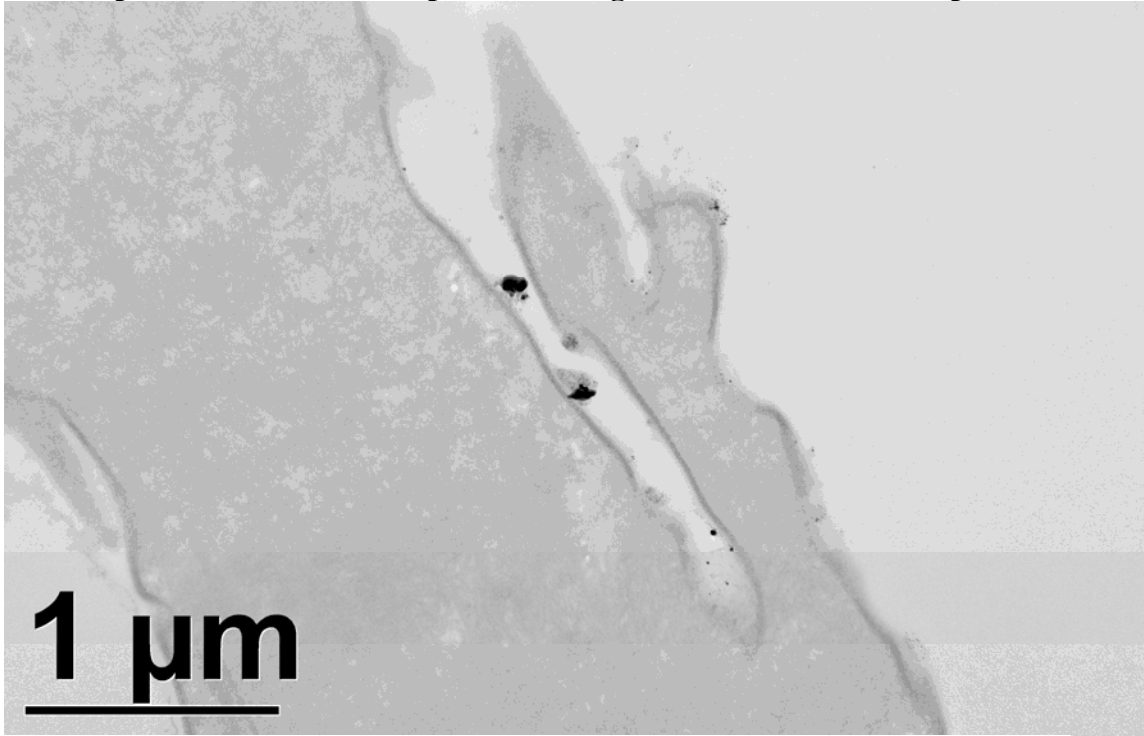


Fig. S6 TEM image of negative control (no QD, glycerol only) and corresponding EDAX spectral scan of dark deposits showing no evidence of silver deposition.



C:\Spectra\DeLouise_071024-MouseSkin-{}ctrl-Ag-0002.spc

Label A:

