



Supplemental Material to:

**Latif Rachdi, Dulanjalee Kariawasam, Virginie Aiello,
Yann Herault, Nathalie Janel, Jean-Maurice Delabar,
Michel Polak, and Raphaël Scharfmann**

**Dyrk1A induces pancreatic β cell mass expansion and
improves glucose tolerance**

Cell Cycle 2014; 13(14)

<http://dx.doi.org/10.4161/cc.29250>

<http://www.landesbioscience.com/journals/cc/article/29250>

Figure S1

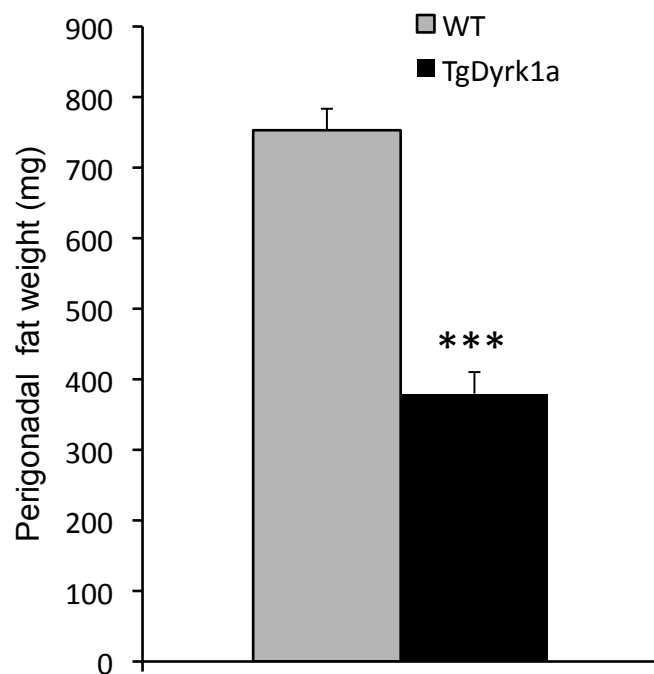


Figure S1: Fat mass in aged *mBACTgDyrk1A* mouse

Perigonadal fat mass in wild type and *mBACTgDyrk1A* male mice of 24 weeks. Data are shown as the mean \pm SEM of at least three independent experiments, ***P < 0.01.

Figure S2

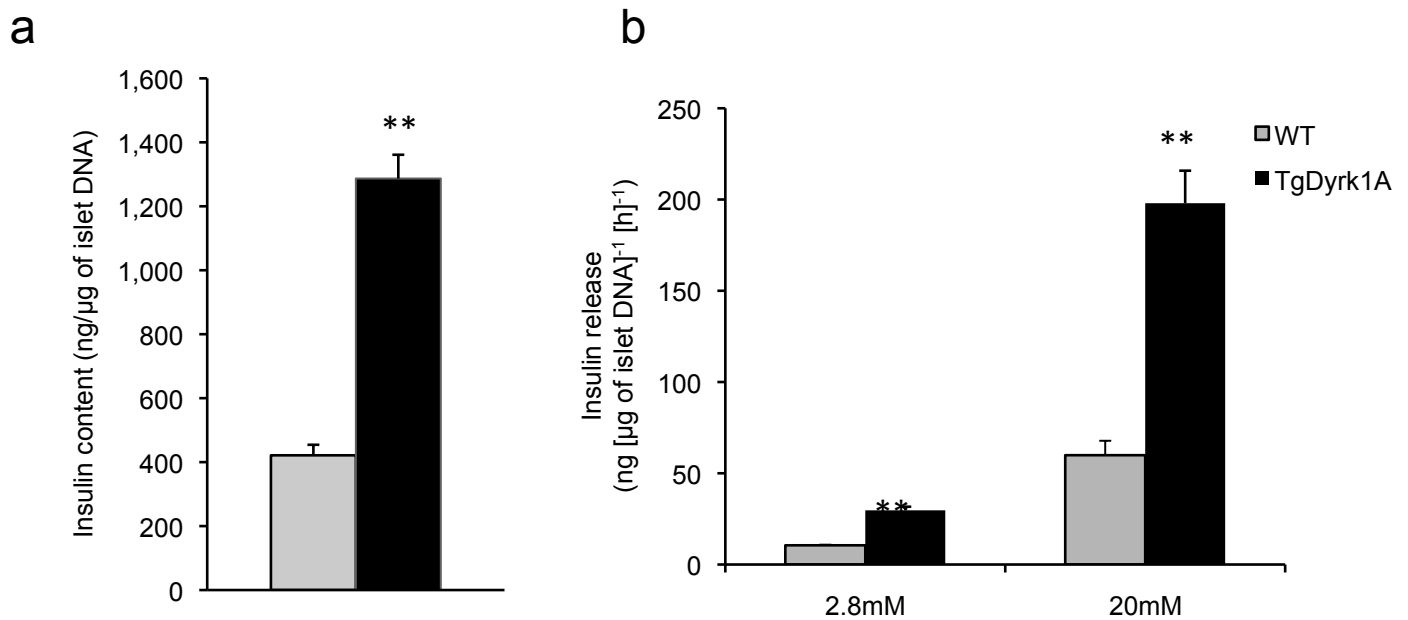
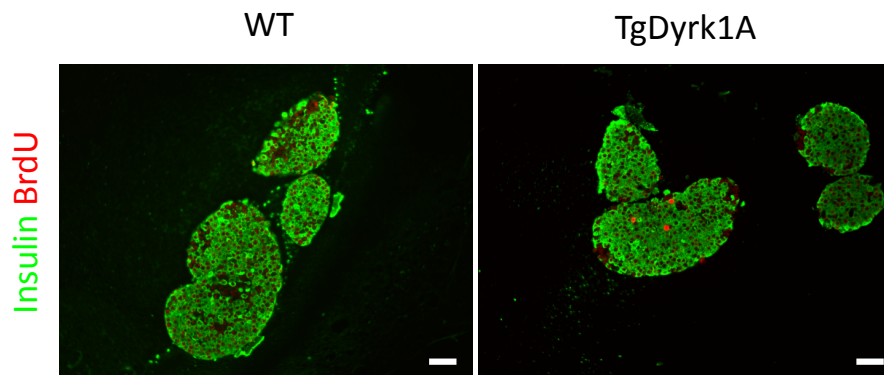


Figure S2: Insulin content and secretion in *mBACTgDyrk1A* mouse islets. (a–b) Insulin content and glucose-induced insulin secretion and insulin content in isolated islets from 12-week-old *mBACTgDyrk1A* and wild-type mice presented as ng per μg of islet DNA per hour. Data are shown as mean ± SEM of at least three independent experiments. **p<0.01.

Figure S3

a



b

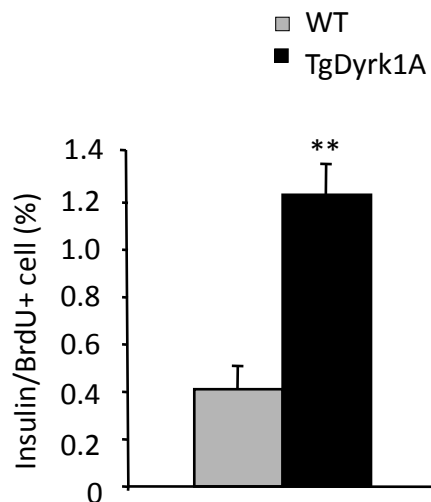


Figure S3: Proliferation in isolated islet from *mBACTgDyrk1A* mice

(a) BrdU and Insulin staining on islet from 24 weeks *mBACTgDyrk1A* and wild-type mice. Scale bar: 25 μ m. (b) Proliferative index was established by measurement of at least 2,000 beta cells. Data are mean \pm SEM from at least three pancreata per condition. **P < 0.01.