

Supplementary data

Figure S1:

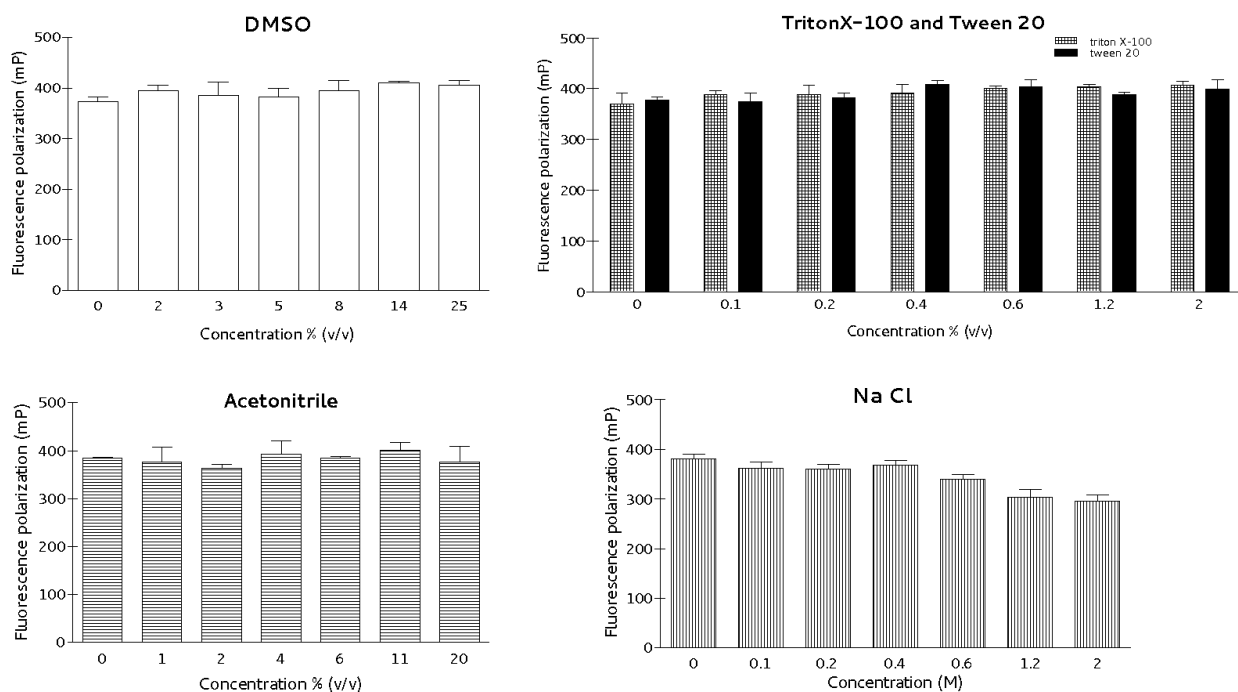


Figure S1. Effect of common additives on the GCPII/TMRGlu saturation binding. The effects of common additives on the assay performance were evaluated under optimized assay conditions. DMSO, Triton X-100, Tween-20, and acetonitrile did not show any adverse effect in whole range on concentrations tested. Slight decrease in FP intensity was observed for sodium chloride concentrations above 0.6 M.

Figure S2:

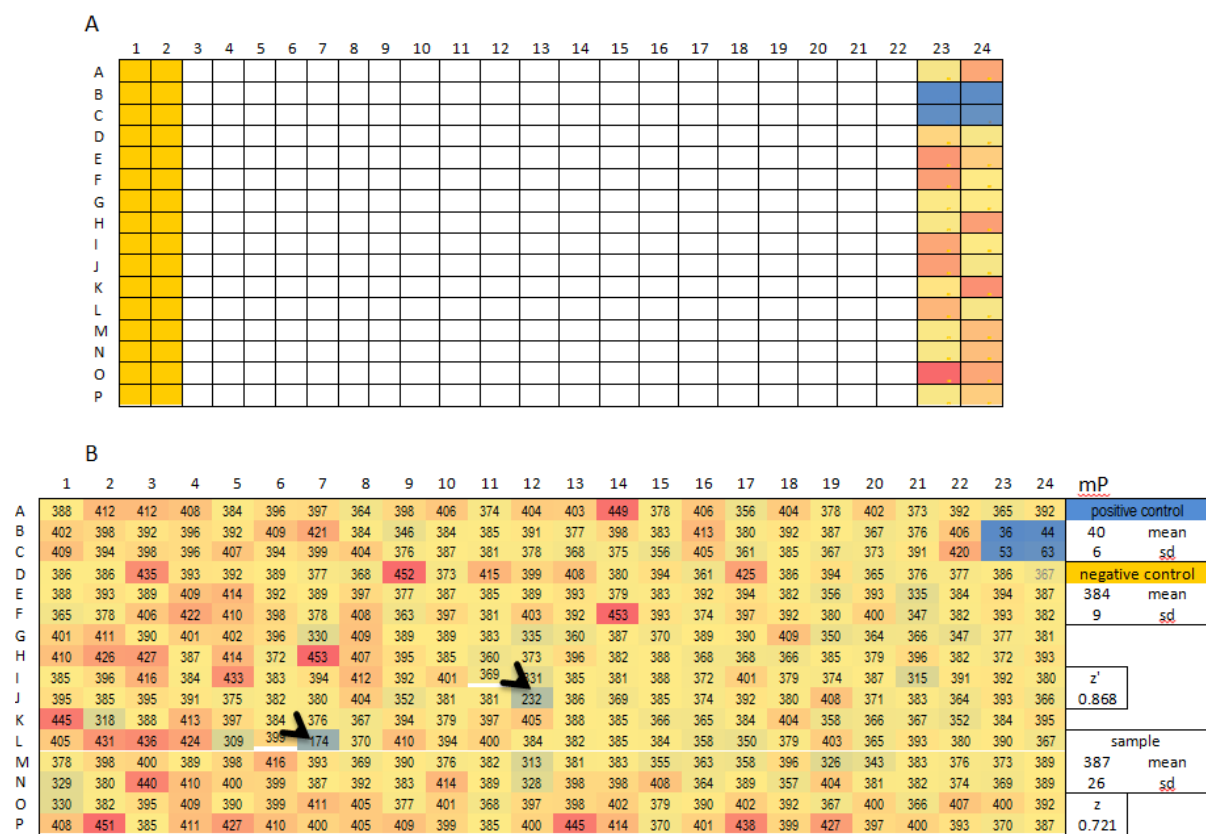


Figure S2. Typical 384-well plate layout for the HTS. In A the yellow wells represent positions in which only DMSO (0.1%) was added, in the blue wells B23 and B24 the strong inhibitor was placed (DCIBzL 1 μ M), whereas in C23 and C24 a slightly weaker inhibitor was placed (JHU-242; 1 μ M). B is an example of the recorded data from a plate during screening (mP), the arrows point the wells that represent a hit.