

Table A1: Sample Districts and Attributes

City of Central District	State of Central District	1970 MSA Enrollment	1970 Central District Enrollment	1970 CD Public Enrollment	1970 CD Public % Black	Desegregation Year	County District
Panel A: Large Central School Districts in Sample							
Birmingham	AL	178	69	65	52%	1970	No
Mobile	AL	99	84	72	42%	1971	Yes
Tucson	AZ	83	56	53	4%	1978	No
Fresno	CA	115	59	57	9%	1978	No
Los Angeles	CA	1,538	698	614	23%	1978	No
Oakland	CA	377	69	60	56%	1966	No
Sacramento	CA	189	53	48	12%	1976	No
San Diego	CA	299	132	122	12%	1977	No
San Francisco	CA	279	108	84	26%	1971	Yes
Denver	CO	270	104	89	14%	1974	Yes ^c
Wilmington*	DE	110	18	14	73%	1978	No
Fort Lauderdale	FL	122	122	110	21%	1970	Yes
Jacksonville	FL	151	129	120	28%	1971	Yes
Lakeland	FL	53	53	51	23%	1969	Yes
Miami	FL	263	263	233	23%	1970	Yes
Orlando	FL	126	84	79	18%	1972	Yes
Tampa	FL	213	112	102	18%	1971	Yes
Titusville	FL	63	62	58	11%	1969	Yes
West Palm Beach	FL	72	72	64	27%	1970	Yes
Atlanta	GA	411	95	88	64%	1973	No
Chicago	IL	1,674	724	542	54%	1982	No
Indianapolis	IN	305	110	98	35%	1973	No
Wichita	KS	101	67	61	13%	1971	No
Louisville*	KY	226	60	50	45%	1975	No
Baton Rouge	LA	97	72	65	34%	1970	Yes
New Orleans	LA	293	141	105	66%	1961	Yes
Shreveport	LA	84	57	53	45%	1969	Yes
Boston	MA	943	118	85	30%	1974	No
Baltimore	MD	498	208	178	65%	1974	Yes
Detroit	MI	1,131	322	261	63%	1975	No
Minneapolis	MN	502	77	63	8%	1974	No
Kansas City	MO	329	75	65	47%	1977	No
St. Louis	MO	604	134	106	64%	1980	Yes
Charlotte	NC	197	86	82	29%	1970	Yes

Table A1: Sample Districts and Attributes, continued

City of Central District	State of Central District	1970 MSA Enrollment	1970 Central District Enrollment	1970 CD Public Enrollment	1970 CD Public % Black	Desegregation Year	County District
Panel A: Large Central School Districts in Sample, continued							
Omaha	NE	143	78	58	18%	1976	No
Newark	NJ	455	90	78	71%	1961	No
Las Vegas	NV	71	64	61	12%	1972	Yes
Buffalo	NY	326	97	69	37%	1976	No
Akron	OH	166	63	54	26%	1977	No
Cincinnati	OH	352	102	77	43%	1973	No
Cleveland	OH	582	169	138	56%	1979	No
Columbus	OH	263	110	96	27%	1979	No
Dayton	OH	236	63	54	36%	1976	No
Toledo	OH	144	75	57	26%	1980	No
Oklahoma City	OK	168	74	69	21%	1972	No
Tulsa	OK	125	77	73	13%	1971	No
Portland	OR	251	81	70	8%	1974	No
Philadelphia	PA	1,134	411	265	60%	1978	Yes
Pittsburgh	PA	622	107	70	39%	1980	No
Charleston	SC	88	63	56	45%	1970	Yes
Greenville	SC	141	58	55	21%	1970	Yes
El Paso	TX	101	63	60	3%	1978	No
Fort Worth	TX	187	87	83	26%	1973	No
Houston	TX	469	252	235	32%	1971	No
San Antonio	TX	231	83	73	15%	1969	No
Norfolk	VA	262	61	55	41%	1970	Yes
Seattle	WA	342	95	82	12%	1978	No
Milwaukee	WI	343	158	120	25%	1976	No
Panel B: Large Central School Districts Not in Sample							
Washington	DC	754	153	135	93%	None	Yes
Albuquerque	NM	103	86	80	3%	None	Yes
New York	NY	1,746	1,468	1,088	35%	None	Yes
Panel C: Medium Sized Central School Districts in Sample							
Little Rock	AR	87	28	26	38%	1971	No
San Bernardino	CA	277	38	36	14%	1978	No
San Jose	CA	268	37	35	2%	1986	No
Vallejo	CA	58	14	13	25%	1975	No

Table A1: Sample Districts and Attributes, continued

City of Central District	State of Central District	1970 MSA Enrollment	1970 Central District Enrollment	1970 CD Public Enrollment	1970 CD Public % Black	Desegregation Year	County District
Panel C: Medium Sized Central School Districts in Sample, continued							
Hartford	CT	242	31	26	46%	1966	No
Daytona Beach	FL	33	32	30	22%	1969	Yes
Fort Myers	FL	20	20	19	18%	1969	Yes
Albany	GA	25	23	22	40%	1980	Yes
Columbus	GA	58	40	39	31%	1971	Yes
Rockford	IL	77	44	38	11%	1973	No
Fort Wayne	IN	104	51	39	14%	1971	No
South Bend	IN	58	41	34	16%	1981	No
Lexington-Fayette	KY	64	36	34	16%	1972	Yes
Alexandria	LA	30	30	28	32%	1969	Yes
Houma	LA	40	21	20	17%	1969	Yes
Lake Charles	LA	40	40	38	25%	1969	Yes
Springfield	MA	133	37	28	20%	1974	No
Grand Rapids	MI	205	48	33	21%	1968	No
Lansing	MI	88	32	29	12%	1972	No
Wilmington	NJ	25	19	18	29%	1969	Yes
Jersey	NY	121	54	35	41%	1976	No
Rochester	NC	237	56	41	33%	1970	No
Lawton	OK	23	21	20	14%	1973	No
Columbia	SC	74	42	40	43%	1970	No
Amarillo	TX	34	30	28	6%	1972	No
Lubbock	TX	42	34	33	11%	1978	No
Odessa	TX	43	24	24	6%	1982	Yes
Waco	TX	32	19	18	21%	1973	No
Roanoke	VA	44	19	18	26%	1970	Yes ^C
Tacoma	WA	95	39	35	9%	1968	No

Note: Panel A lists information on central school districts that had enrollment exceeding 50,000 in 1968 as measured in Welch and Light (1987). Welch and Light use school district reported enrollments as of 1968, in contrast to the 1970 Census based enrollment measure reported here. Panel B lists information on those central districts with enrollment exceeding 50,000 in 1968 which were not included in the sample because they never had a major desegregation order or had very high or low minority enrollment. Panel C lists all remaining central districts in the sample as investigated by Welch and Light. These districts had enrollment between 15,000 and 50,000 in 1968 and were 10 to 90 percent black. All numbers are for 1970 district geographies. *District consolidated into one or more surrounding districts at some point after 1970. ^CThis district is or was comprised fully of one county that changed over time.

Table A2: Impacts of Desegregation on Total Enrollment

	<u>ln(white total enrollment)</u>	<u>ln(black total enrollment)</u>
	<u>1</u>	<u>2</u>
Panel A: National		
Desegregated	-0.09** (0.04)	
Desegregated (5+)		0.12*** (0.03)
Panel B: Regional		
(Deseg)*(South)	-0.12** (0.06)	
(Deseg)*(Non-South)	-0.02 (0.05)	
(Deseg 5+)*(South)		-0.01 (0.04)
(Deseg 5+)*(Non-South)		0.18*** (0.04)
MSA & Year-South FE	X	X

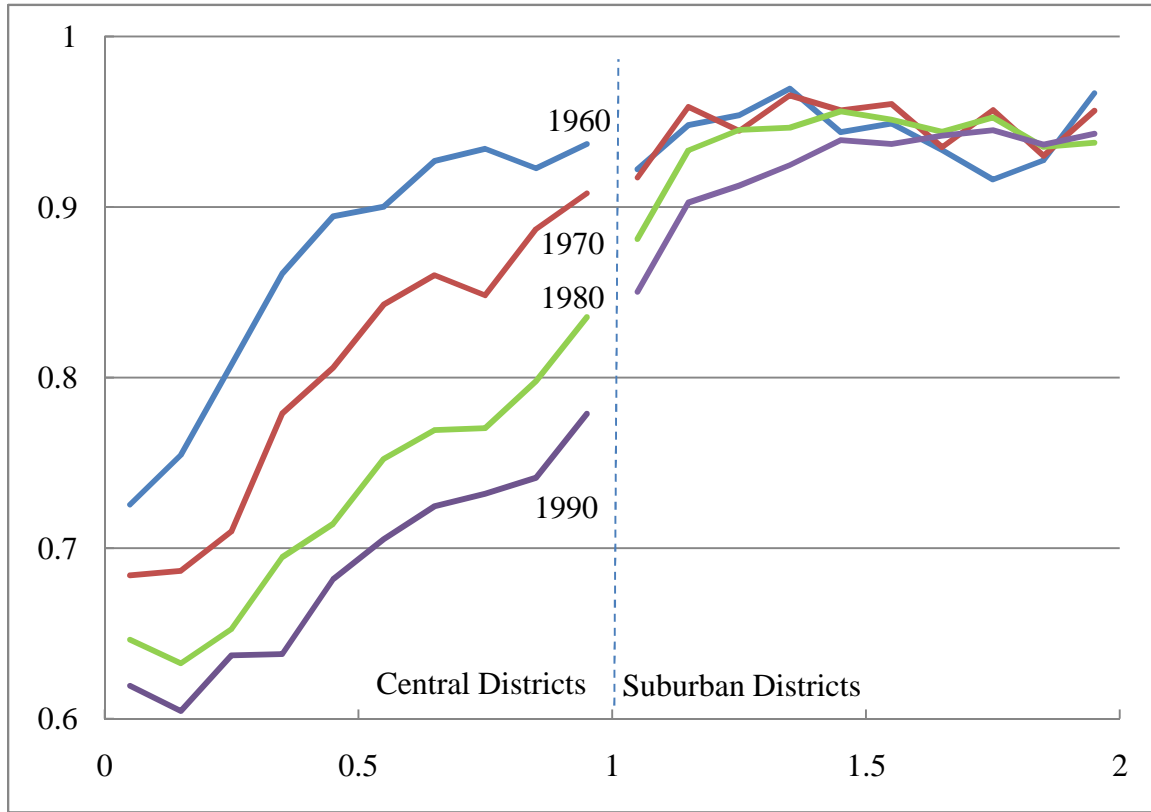
Note: See note to Table 2 for an explanation of the sample and variables.

Table A3: Impacts of Desegregation on MSA Level Outcomes

	<u>ln(public enrollment)</u>	<u>ln(private enrollment)</u>	<u>ln(total population)</u>
	1	2	3
Panel A: Whites			
(Deseg)*(South)	-0.02 (0.04)	0.09 (0.07)	-0.04 (0.03)
(Deseg)*(Non-South)	0.00 (0.03)	0.08 (0.08)	0.02 (0.03)
Panel B: Blacks			
(Deseg)*(South)	0.00 (0.02)	-0.43*** (0.16)	0.01 (0.02)
(Deseg)*(Non-South)	-0.13 (0.09)	-0.01 (0.18)	-0.10 (0.09)
(Deseg 5+)*(South)	-0.01 (0.03)	-0.33 (0.24)	-0.01 (0.04)
(Deseg 5+)*(Non-South)	0.14** (0.03)	-0.06 (0.08)	0.08** (0.03)
MSA & Year-South FE	X	X	X

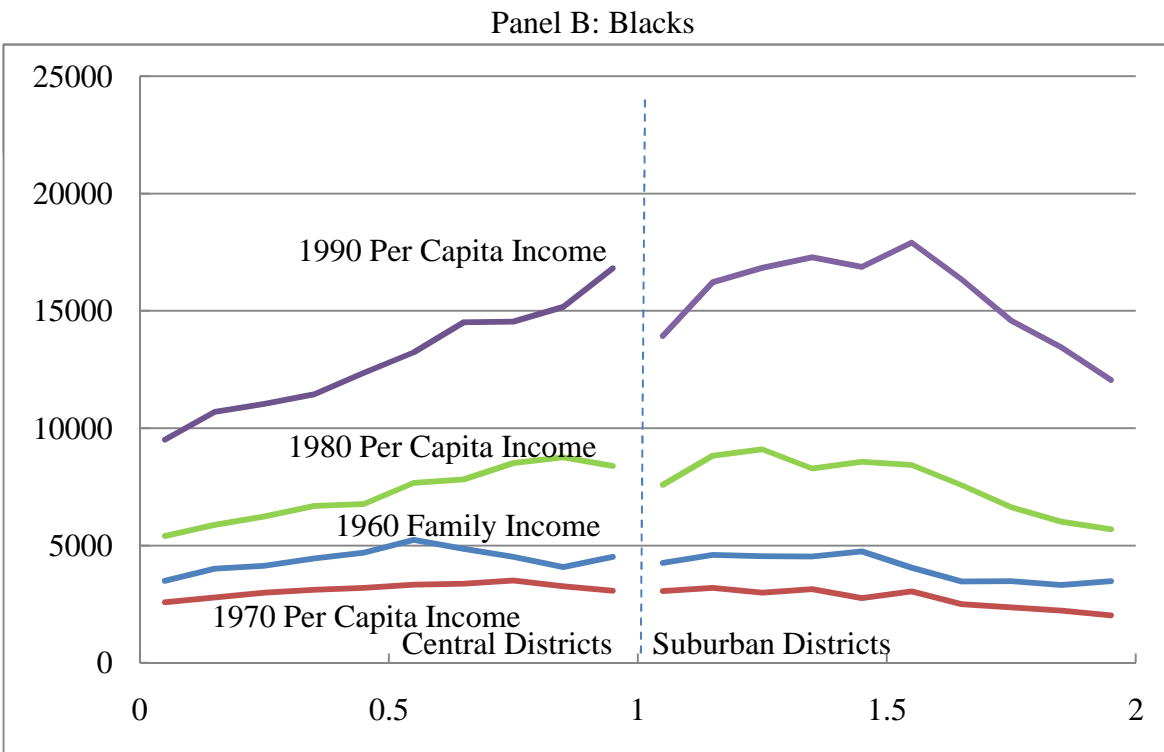
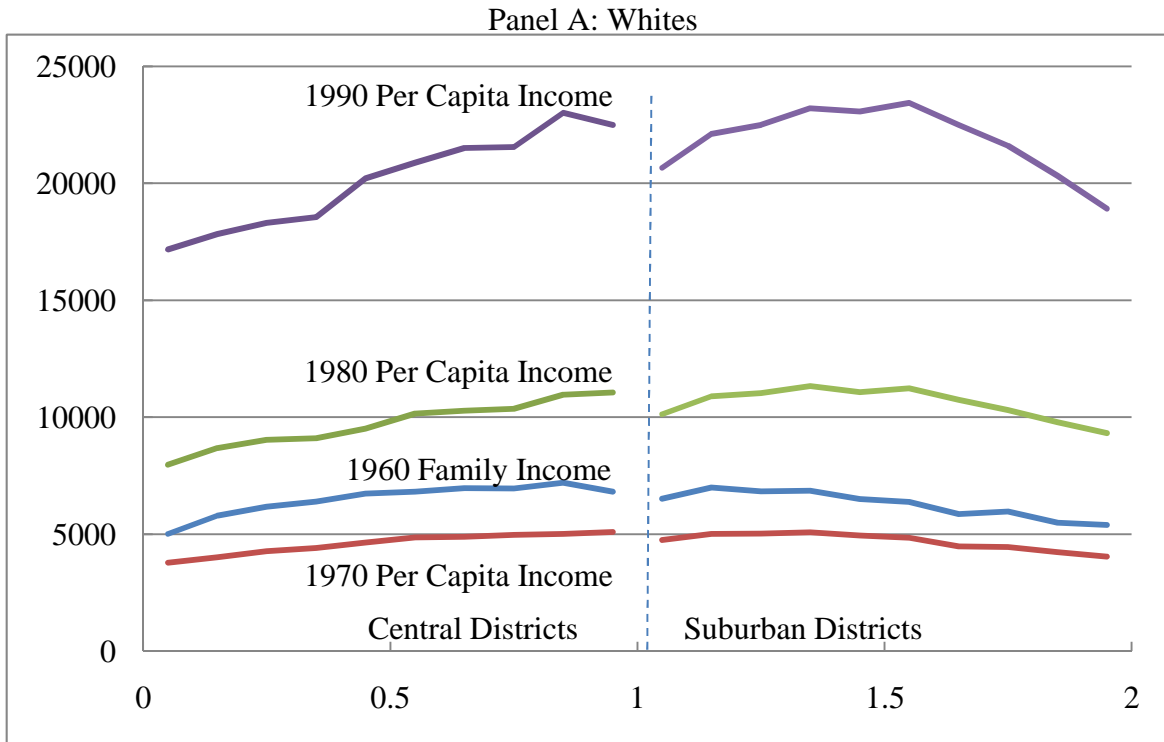
Note: The unit of observation is the MSA; otherwise the sample is the same as used in Table 2. See note to Table 2 for an explanation of the sample and variables.

Figure A1: Fraction White by Residential Location



Note: Graph shows the average ratio of residential white to white plus black population as a function of CBD distance across metropolitan areas in our sample for which census tract data are available. The sample includes the 64 metropolitan areas with central districts that were tracted in 1960 and experienced major desegregation orders. Metropolitan areas with fewer than 6 suburban tracts in any year are excluded. Each metropolitan area is weighted equally at all locations on the graph. The horizontal axis shows locations indexed as the cumulative distribution functions of 1990 population with respect to CBD distance inside and outside of central districts.

Figure A2: Income by Race and Residential Location



Note: Graphs show median family or per capita income by race as a function of CBD distance across metropolitan areas. See the notes to Figure A1 for explanations of the sample, distance metric and weighting.