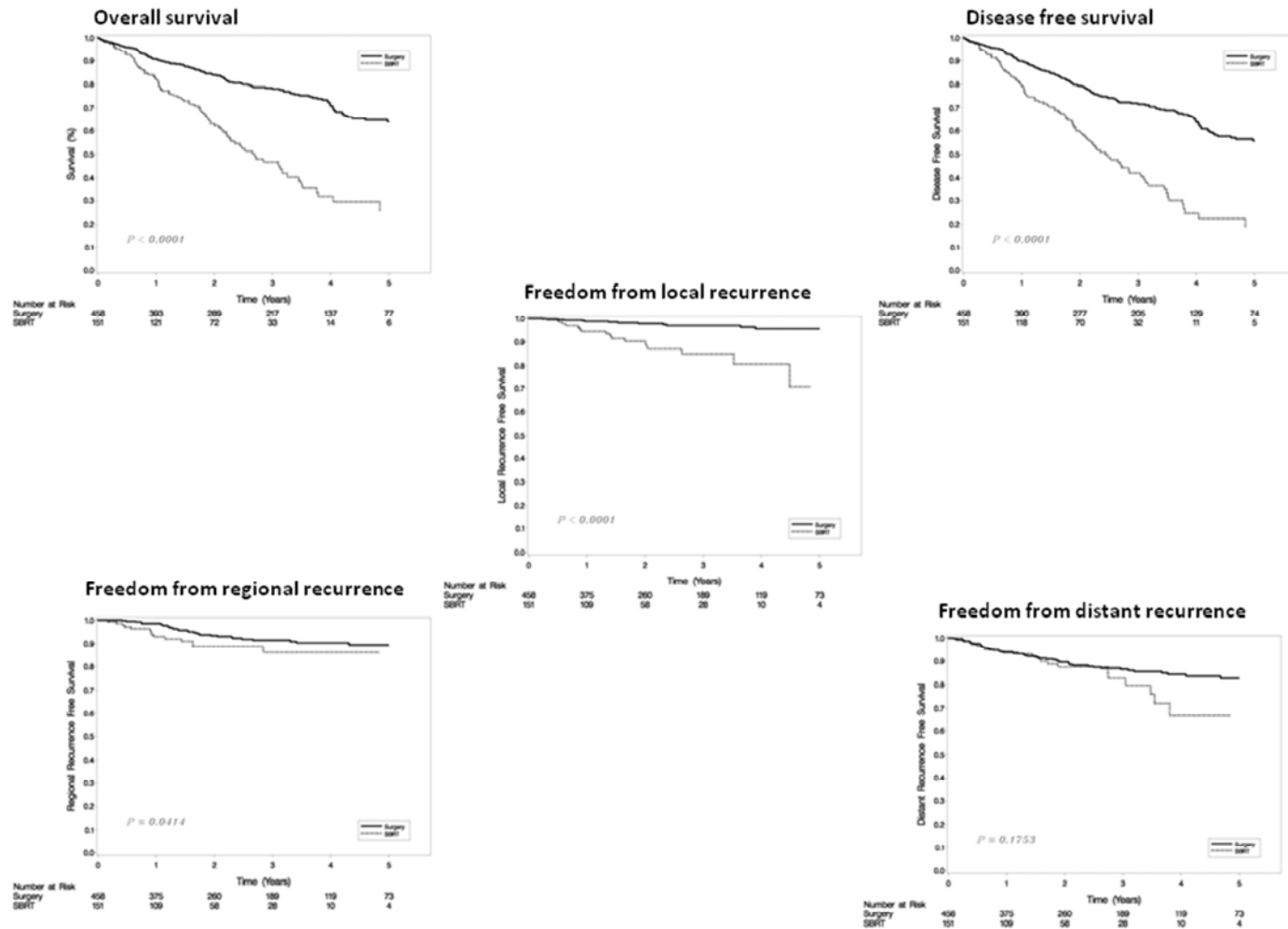


Online Supplemental Figure 1. Overall, disease-free, local-, regional-, and distant-free recurrence survival for the entire cohort of surgical (N=458) and SBRT(N=151) patients with clinical Stage I NSCLC.



Online Supplemental Table 1. Overall, disease-free, local-, regional-, and distant-free recurrence survival for the entire cohort of surgical (N=458) and SBRT(N=151) patients with clinical Stage I NSCLC. Table includes confidence intervals for survival analysis.

1-1A). Median follow-up is 2.42 years.

From DOS to Follow up or death (years)				
N	Mean	Minimum	Maximum	Median
609	2.79	0.01	7.44	2.42

From DOS to Follow up or death (years)					
Group	N	Mean	Minimum	Maximum	Median
Surgery	458	3.00	0.01	7.44	2.83
SBRT	151	2.15	0.05	6.32	1.95

1-1B). Overall survival is defined from date of treatment (dos) to death date or the last follow-up.

Summary of the # of Deaths and # of Patients Alive at Last Follow-up				
Group	Total # Patients	Total # Deaths	Total # Alive at Last Follow-up	Percent Alive at Last Follow-up
SBRT	151	81	70	46.36
Surgery	458	121	337	73.58
	609	202	407	66.83

1-1C). Overall survival is tabled below:

Group	Year	Percent Alive	95% Confidence Interval
SBRT	1	0.82	(0.75, 0.87)
SBRT	3	0.47	(0.37, 0.55)
SBRT	5	0.25	(0.14, 0.37)
Surgery	1	0.91	(0.88, 0.93)
Surgery	3	0.78	(0.73, 0.82)
Surgery	5	0.64	(0.58, 0.69)

1-2A). Disease free was defined as being alive without disease. The patients with disease or death are counted as disease. DFS (Disease Free Survival) was defined as the time from DOS to date of cancer recurrence, death or last follow-up.

From DOS to disease/death/Follow up (years)				
N	Mean	Minimum	Maximum	Median
609	2.71	0.01	7.44	2.28

From DOS to disease/death/Follow up (years)					
Group	N	Mean	Minimum	Maximum	Median
Surgery	458	2.91	0.01	7.44	2.67
SBRT	151	2.08	0.05	6.22	1.93

1-2B).

Summary of the # of Patients Disease and # of Patients Disease Free at Last Follow-up				
Group	Total # Patients	Total # Disease	Total # Disease Free at Last Follow-up	Percent Disease Free at Last Follow-up
SBRT	151	91	60	39.74
Surgery	458	154	304	66.38
	609	245	364	59.77

1-2C) Disease free survival (DFS) is tabled below:

Group	Year	Percent Disease Free	95% Confidence Interval
SBRT	1	0.79	(0.72, 0.85)
SBRT	3	0.42	(0.33, 0.51)
SBRT	5	0.19	(0.10, 0.30)
Surgery	1	0.90	(0.87, 0.92)
Surgery	3	0.72	(0.67, 0.76)
Surgery	5	0.56	(0.49, 0.61)

1-3A). Local recurrence is defined as having local recurrence or censored at any other recurrences or the last follow-up. Local recurrence free survival is defined as the time from DOS to date of recurrence or last follow-up.

From DOS to local recurrence/Follow up (years)				
N	Mean	Minimum	Maximum	Median
609	2.56	0.01	7.44	2.08

From DOS to local recurrence/Follow up (years)					
Group	N	Mean	Minimum	Maximum	Median
Surgery	458	2.78	0.01	7.44	2.31
SBRT	151	1.92	0.05	6.22	1.73

For the patients who have local recurrence only,

From DOS to local recurrence (years)						
group		N	Mean	Minimum	Maximum	Median
Surgery		12	1.69	0.24	3.90	1.45
SBRT		16	1.57	0.30	4.48	1.37

1-3B).

Summary of the # of Patients Local Recurrence and # of Patients Local Recurrence Free at Last Follow-up				
Group	Total # Patients	Total # Local Recurrence	Total # Local Recurrence Free at Last Follow-up	Percent Local Recurrence Free at Last Follow-up
SBRT	150	16	134	89.33
Surgery	458	12	446	97.38
	608	28	580	95.39

1-3C).

Group	Year	Percent Local Recurrence Free	95% Confidence Interval
SBRT	1	0.94	(0.89, 0.97)
SBRT	3	0.85	(0.75, 0.91)
SBRT	5	0.71	(0.44, 0.86)

Group	Year	Percent Local Recurrence Free	95% Confidence Interval
Surgery	1	0.99	(0.97, 0.99)
Surgery	3	0.97	(0.94, 0.98)
Surgery	5	0.96	(0.92, 0.98)

1-4A). Regional recurrence is defined as having regional recurrence or censored at any other recurrences or the last follow-up. Regional recurrence free survival is defined as the time from DOS to date of recurrence or last follow-up.

For the patients who have local recurrence only,

From DOS to regional recurrence (years)						
group		N	Mean	Minimum	Maximum	Median
Surgery		32	1.77	0.41	5.95	1.46
SBRT		15	1.37	0.18	6.22	0.92

1-4B).

Summary of the # of Patients Regional Recurrence and # of Patients Regional Recurrence Free at Last Follow-up				
Group	Total # Patients	Total # Regional Recurrence	Total # Regional Recurrence Free at Last Follow-up	Percent Regional Recurrence Free at Last Follow-up
SBRT	150	15	135	90.00
Surgery	458	32	426	93.01
	608	47	561	92.27

1-4C).

Group	Year	Percent Regional Recurrence Free	95% Confidence Interval
SBRT	1	0.93	(0.87, 0.96)
SBRT	3	0.86	(0.76, 0.92)
SBRT	5	0.86	(0.76, 0.92)
Surgery	1	0.99	(0.97, 0.99)
Surgery	3	0.91	(0.88, 0.94)
Surgery	5	0.89	(0.85, 0.93)

1-5A). Distant recurrence is defined as having distant recurrence or censored at any other recurrences or the last follow-up. Distant recurrence free survival is defined as the time from DOS to date of recurrence or last follow-up.

For the patients who have distant recurrence only,

From DOS to distant recurrence (years)						
group		N	Mean	Minimum	Maximum	Median
Surgery		58	1.64	0.09	6.50	1.24
SBRT		20	1.63	0.23	3.80	1.49

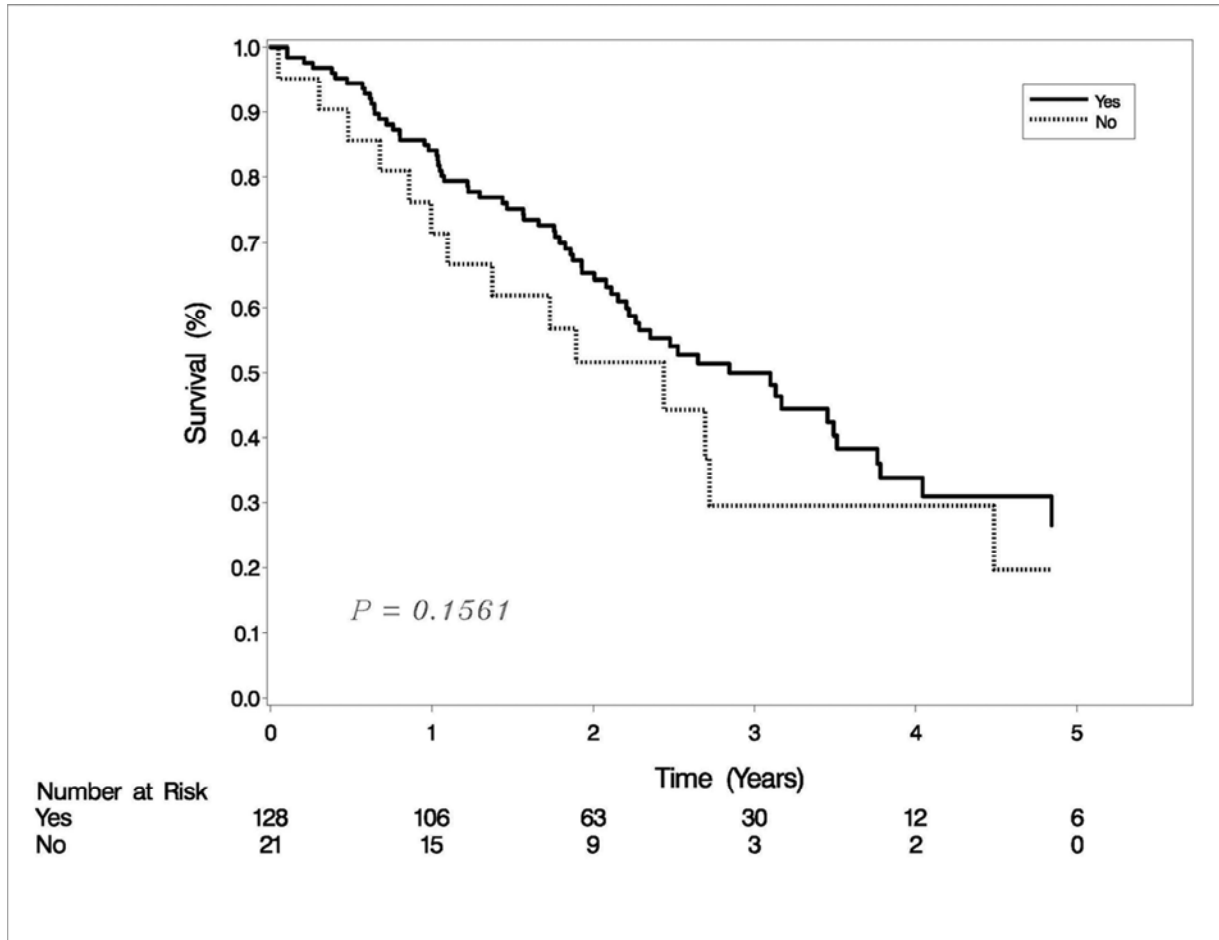
1-5B).

Summary of the # of Patients Distant Recurrence and # of Patients Distant Recurrence Free at Last Follow-up				
Group	Total # Patients	Total # Distant Recurrence	Total # Distant Recurrence Free at Last Follow-up	Percent Distant Recurrence Free at Last Follow-up
SBRT	150	20	130	86.67
Surgery	458	58	400	87.34
	608	78	530	87.17

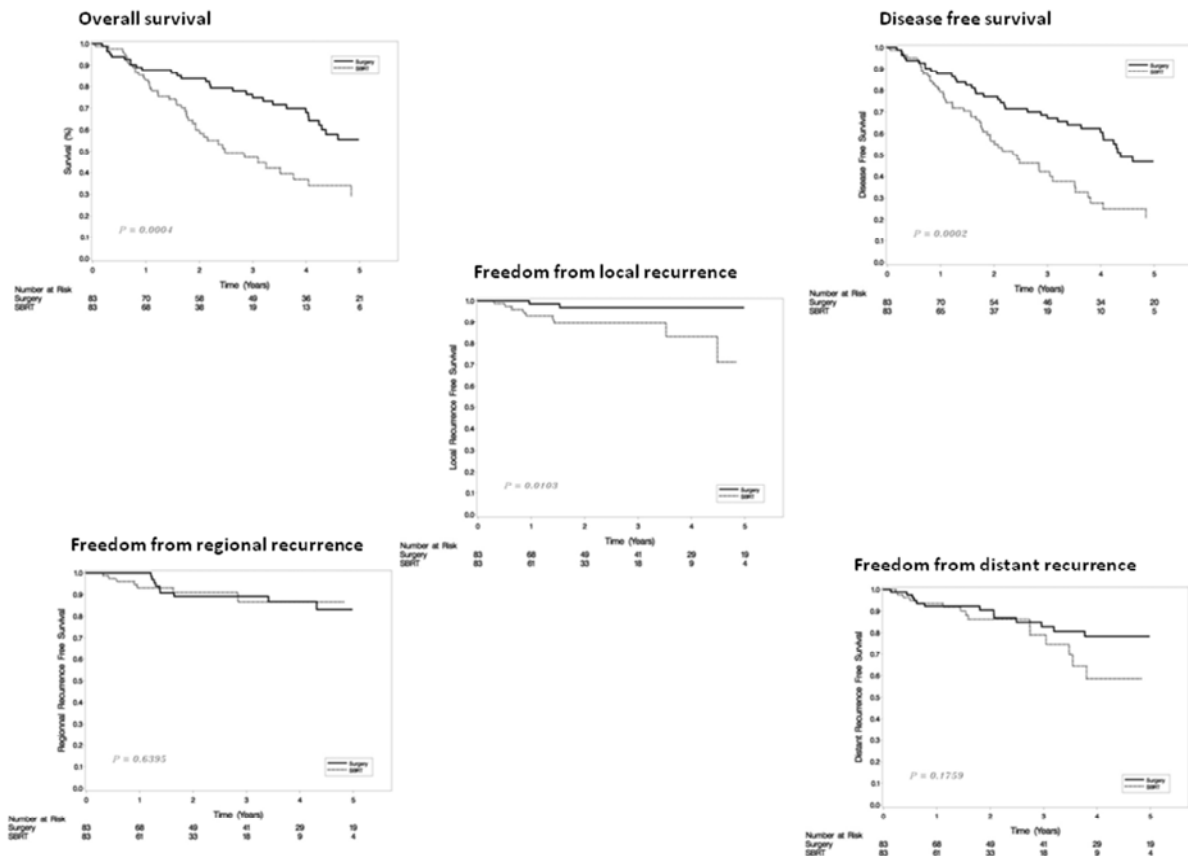
1-5C).

Group	Year	Percent Distant Recurrence Free	95% Confidence Interval
SBRT	1	0.94	(0.88, 0.97)
SBRT	3	0.83	(0.72, 0.90)
SBRT	5	0.66	(0.47, 0.80)
Surgery	1	0.94	(0.91, 0.96)
Surgery	3	0.86	(0.82, 0.90)
Surgery	5	0.83	(0.77, 0.87)

Online Supplemental Figure 2. Survival for Entire Cohort of SBRT Patients Treated with vs. without a Tissue Diagnosis of NSCLC.



Online Supplemental Figure 3. Overall, disease-free, local-, regional-, and distant-free recurrence survival for the initial propensity matched comparison based on age, tumor stage, and ACE comorbidity score in patients undergoing surgery (N=83) vs. SBRT(N=83) for clinical Stage I NSCLC.



Online Supplemental Table 3. Overall, disease-free, local-, regional-, and distant-free recurrence survival for the initial propensity matched comparison based on age, tumor stage, and ACE comorbidity score in patients undergoing surgery (N=83) vs. SBRT(N=83) for clinical Stage I NSCLC. Tables include confidence intervals for survival analysis.

For the matched patients,
3-1A). Median follow-up is 2.34 years.

From DOS to Follow up or death (years)				
N	Mean	Minimum	Maximum	Median
166	2.86	0.05	7.18	2.34

From DOS to Follow up or death (years)					
Group	N	Mean	Minimum	Maximum	Median
Surgery	83	3.43	0.08	7.18	3.58
SBRT	83	2.28	0.05	6.32	1.91

3-1B). Overall survival is defined from date of treatment (dos) to death date or the last follow-up.

Summary of the # of Deaths and # of Patients Alive at Last Follow-up				
Group	Total # Patients	Total # Deaths	Total # Alive at Last Follow-up	Percent Alive at Last Follow-up
SBRT	83	45	38	45.78
Surgery	83	31	52	62.65
	166	76	90	54.22

3-1C). Overall survival is tabled below:

Group	Year	Percent Alive	95% Confidence Interval
SBRT	1	0.83	(0.73, 0.90)
SBRT	3	0.47	(0.35, 0.59)
SBRT	5	0.29	(0.16, 0.44)
Surgery	1	0.88	(0.78, 0.93)

Group	Year	Percent Alive	95% Confidence Interval
Surgery	3	0.75	(0.63, 0.83)
Surgery	5	0.55	(0.42, 0.67)

3-2A). Disease free was defined as being alive without disease. The patients with disease or death are counted as disease. DFS (Disease Free Survival) was defined as the time from DOS to date of cancer recurrence, death or last follow-up.

From DOS to disease/death/Follow up (years)				
N	Mean	Minimum	Maximum	Median
166	2.74	0.05	7.18	2.20

From DOS to disease/death/Follow up (years)					
Group	N	Mean	Minimum	Maximum	Median
Surgery	83	3.30	0.08	7.18	3.38
SBRT	83	2.17	0.05	6.22	1.89

3-2B).

Summary of the # of Patients Disease and # of Patients Disease Free at Last Follow-up				
Group	Total # Patients	Total # Disease	Total # Disease Free at Last Follow-up	Percent Disease Free at Last Follow-up
SBRT	83	52	31	37.35
Surgery	83	38	45	54.22
	166	90	76	45.78

3-2C) Disease free survival (DFS) is tabled below:

Group	Year	Percent Disease Free	95% Confidence Interval
SBRT	1	0.79	(0.69, 0.87)
SBRT	3	0.42	(0.30, 0.54)
SBRT	5	0.21	(0.10, 0.34)
Surgery	1	0.88	(0.78, 0.93)

Group	Year	Percent Disease Free	95% Confidence Interval
Surgery	3	0.67	(0.55, 0.76)
Surgery	5	0.47	(0.34, 0.59)

3-3A). Local recurrence is defined as having local recurrence or censored at any other recurrences or the last follow-up. Local recurrence free survival is defined as the time from DOS to date of recurrence or last follow-up.

From DOS to local recurrence/Follow up (years)				
N	Mean	Minimum	Maximum	Median
166	2.56	0.05	7.18	1.98

From DOS to local recurrence/Follow up (years)					
Group	N	Mean	Minimum	Maximum	Median
Surgery	83	3.07	0.08	7.18	2.96
SBRT	83	2.05	0.05	6.22	1.73

For the patients who have local recurrence only,

From DOS to local recurrence (years)						
group		N	Mean	Minimum	Maximum	Median
Surgery		2	1.25	0.96	1.53	1.25
SBRT		9	1.56	0.30	4.48	0.90

3-3B).

Summary of the # of Patients Local Recurrence and # of Patients Local Recurrence Free at Last Follow-up				
Group	Total # Patients	Total # Local Recurrence	Total # Local Recurrence Free at Last Follow-up	Percent Local Recurrence Free at Last Follow-up
SBRT	83	9	74	89.16
Surgery	83	2	81	97.59
	166	11	155	93.37

3-3C).

Group	Year	Percent Local Recurrence Free	95% Confidence Interval
SBRT	1	0.93	(0.84, 0.97)
SBRT	3	0.90	(0.79, 0.95)
SBRT	5	0.71	(0.39, 0.88)
Surgery	1	0.99	(0.90, 0.998)
Surgery	3	0.97	(0.88, 0.99)
Surgery	5	0.97	(0.88, 0.99)

3-4A). Regional recurrence is defined as having regional recurrence or censored at any other recurrences or the last follow-up. Regional recurrence free survival is defined as the time from DOS to date of recurrence or last follow-up.

For the patients who have local recurrence only,

From DOS to regional recurrence (years)						
group		N	Mean	Minimum	Maximum	Median
Surgery		9	1.91	1.21	4.31	1.37
SBRT		8	1.73	0.32	6.22	0.93

3-4B).

Summary of the # of Patients Regional Recurrence and # of Patients Regional Recurrence Free at Last Follow-up				
Group	Total # Patients	Total # Regional Recurrence	Total # Regional Recurrence Free at Last Follow-up	Percent Regional Recurrence Free at Last Follow-up
SBRT	83	8	75	90.36
Surgery	83	9	74	89.16
	166	17	149	89.76

3-4C).

Group	Year	Percent Regional Recurrence Free	95% Confidence Interval
SBRT	1	0.93	(0.84, 0.97)
SBRT	3	0.87	(0.71, 0.94)
SBRT	5	0.87	(0.71, 0.94)

Group	Year	Percent Regional Recurrence Free	95% Confidence Interval
Surgery	1	1.00	
Surgery	3	0.89	(0.79, 0.95)
Surgery	5	0.83	(0.69, 0.91)

3-5A). Distant recurrence is defined as having distant recurrence or censored at any other recurrences or the last follow-up. Distant recurrence free survival is defined as the time from DOS to date of recurrence or last follow-up.

For the patients who have distant recurrence only,

From DOS to distant recurrence (years)						
group		N	Mean	Minimum	Maximum	Median
Surgery		13	1.65	0.14	3.77	1.80
SBRT		15	1.80	0.23	3.80	1.55

3-5B).

Summary of the # of Patients Distant Recurrence and # of Patients Distant Recurrence Free at Last Follow-up				
Group	Total # Patients	Total # Distant Recurrence	Total # Distant Recurrence Free at Last Follow-up	Percent Distant Recurrence Free at Last Follow-up
SBRT	83	15	68	81.93
Surgery	83	13	70	84.34
	166	28	138	83.13

3-5C).

Group	Year	Percent Distant Recurrence Free	95% Confidence Interval
SBRT	1	0.94	(0.85, 0.97)
SBRT	3	0.79	(0.63, 0.89)
SBRT	5	0.58	(0.36, 0.75)
Surgery	1	0.92	(0.84, 0.96)
Surgery	3	0.83	(0.71, 0.90)
Surgery	5	0.78	(0.65, 0.87)

Online Supplemental Table 4. Overall, disease-free, local-, regional-, and distant-free recurrence survival for the final propensity matched comparison based on age, tumor size, ACE comorbidity score, tumor location (central vs. peripheral), and FEV1% in patients undergoing surgery (N=56) vs. SBRT(N=56) for clinical Stage I NSCLC. Tables include confidence intervals for survival analysis.

For the matched patients,

4-1A). Median follow-up is 2.19 years.

From DOS to Follow up or death (years)				
N	Mean	Minimum	Maximum	Median
112	2.95	0.09	7.44	2.19

From DOS to Follow up or death (years)					
Group	N	Mean	Minimum	Maximum	Median
Surgery	56	3.77	0.09	7.44	4.16
SBRT	56	2.13	0.26	6.04	1.88

4-1B). Overall survival is defined from date of treatment (dos) to death date or the last follow-up.

Summary of the # of Deaths and # of Patients Alive at Last Follow-up				
Group	Total # Patients	Total # Deaths	Total # Alive at Last Follow-up	Percent Alive at Last Follow-up
SBRT	56	26	30	53.57
Surgery	56	24	32	57.14
	112	50	62	55.36

4-1C). Overall survival is tabled below:

Group	Year	Percent Alive	95% Confidence Interval	
SBRT	1	0.83854	0.71263	0.91254
SBRT	2	0.58311	0.43116	0.70764
SBRT	3	0.51629	0.35691	0.65430
SBRT	4	0.46466	0.29405	0.61883
SBRT	5	0.38722	0.19820	0.57340

Group	Year	Percent Alive	95% Confidence Interval	
Surgery	1	0.83636	0.70912	0.91129
Surgery	2	0.74132	0.60220	0.83807
Surgery	3	0.67650	0.53069	0.78578
Surgery	4	0.67650	0.53069	0.78578
Surgery	5	0.58678	0.43679	0.70956

4-2A). Disease free was defined as being alive without disease. The patients with disease or death are counted as disease. DFS (Disease Free Survival) was defined as the time from DOS to date of cancer recurrence, death or last follow-up.

From DOS to disease/death/Follow up (years)				
N	Mean	Minimum	Maximum	Median
112	2.89	0.09	7.44	2.14

From DOS to disease/death/Follow up (years)					
Group	N	Mean	Minimum	Maximum	Median
Surgery	56	3.74	0.09	7.44	4.08
SBRT	56	2.04	0.26	6.04	1.82

4-2B).

Summary of the # of Patients Disease and # of Patients Disease Free at Last Follow-up				
Group	Total # Patients	Total # Disease	Total # Disease Free at Last Follow-up	Percent Disease Free at Last Follow-up
SBRT	56	30	26	46.43
Surgery	56	25	31	55.36
	112	55	57	50.89

4-2C) Disease free survival (DFS) is tabled below:

Group	Year	Percent Disease Free	95% Confidence Interval	
SBRT	1	0.78571	0.65362	0.87217

Group	Year	Percent Disease Free	95% Confidence Interval	
SBRT	2	0.53660	0.38889	0.66345
SBRT	3	0.47137	0.31835	0.61005
SBRT	4	0.37710	0.21541	0.53819
SBRT	5	0.30168	0.13331	0.49032
Surgery	1	0.83636	0.70912	0.91129
Surgery	2	0.74132	0.60220	0.83807
Surgery	3	0.65468	0.50745	0.76756
Surgery	4	0.65468	0.50745	0.76756
Surgery	5	0.56577	0.41620	0.69068

4-3A). Local recurrence is defined as having local recurrence or censored at any other recurrences or the last follow-up. Local recurrence free survival is defined as the time from DOS to date of recurrence or last follow-up.

From DOS to local recurrence/Follow up (years)				
N	Mean	Minimum	Maximum	Median
112	2.78	0.09	7.44	2.14

From DOS to local recurrence/Follow up (years)					
Group	N	Mean	Minimum	Maximum	Median
Surgery	56	3.62	0.09	7.44	3.54
SBRT	56	1.95	0.23	6.04	1.60

For the patients who have local recurrence only,

From DOS to local recurrence (years)						
group		N	Mean	Minimum	Maximum	Median
Surgery		3	1.73	0.50	2.37	2.31
SBRT		6	1.95	0.51	4.48	1.16

4-3B).

Summary of the # of Patients Local Recurrence and # of Patients Local Recurrence Free at Last Follow-up				
Group	Total # Patients	Total # Local Recurrence	Total # Local Recurrence Free at Last Follow-up	Percent Local Recurrence Free at Last Follow-up
SBRT	56	6	50	89.29
Surgery	56	3	53	94.64
	112	9	103	91.96

4-3C).

Group	Year	Percent Local Recurrence Free	95% Confidence Interval	
SBRT	1	0.93830	0.82069	0.97968
SBRT	2	0.90986	0.77449	0.96569
SBRT	3	0.90986	0.77449	0.96569
SBRT	4	0.80877	0.50295	0.93656
SBRT	5	0.40438	0.01373	0.82601
Surgery	1	0.98077	0.87123	0.99727
Surgery	2	0.98077	0.87123	0.99727
Surgery	3	0.92133	0.77097	0.97452
Surgery	4	0.92133	0.77097	0.97452
Surgery	5	0.92133	0.77097	0.97452

4-4A). Regional recurrence is defined as having regional recurrence or censored at any other recurrences or the last follow-up. Regional recurrence free survival is defined as the time from DOS to date of recurrence or last follow-up.

For the patients who have local recurrence only,

From DOS to regional recurrence (years)						
group	N	Mean	Minimum	Maximum	Median	
Surgery	3	2.18	0.75	3.31	2.48	
SBRT	6	0.90	0.42	1.63	0.91	

4-4B).

Summary of the # of Patients Regional Recurrence and # of Patients Regional Recurrence Free at Last Follow-up				
Group	Total # Patients	Total # Regional Recurrence	Total # Regional Recurrence Free at Last Follow-up	Percent Regional Recurrence Free at Last Follow-up
SBRT	56	6	50	89.29
Surgery	56	3	53	94.64
	112	9	103	91.96

4-4C).

Group	Year	Percent Regional Recurrence Free	95% Confidence Interval	
SBRT	1	0.89715	0.77003	0.95592
SBRT	2	0.86511	0.71924	0.93827
SBRT	3	0.86511	0.71924	0.93827
SBRT	4	0.86511	0.71924	0.93827
SBRT	5	0.86511	0.71924	0.93827
Surgery	1	0.97872	0.85840	0.99698
Surgery	2	0.97872	0.85840	0.99698
Surgery	3	0.94610	0.79511	0.98670
Surgery	4	0.91348	0.75036	0.97189
Surgery	5	0.91348	0.75036	0.97189

4-5A). Distant recurrence is defined as having distant recurrence or censored at any other recurrences or the last follow-up. Distant recurrence free survival is defined as the time from DOS to date of recurrence or last follow-up.

For the patients who have distant recurrence only,

From DOS to distant recurrence (years)						
group		N	Mean	Minimum	Maximum	Median
Surgery		10	1.54	0.14	5.54	0.69
SBRT		7	1.70	0.23	3.55	1.11

4-5B).

Summary of the # of Patients Distant Recurrence and # of Patients Distant Recurrence Free at Last Follow-up				
Group	Total # Patients	Total # Distant Recurrence	Total # Distant Recurrence Free at Last Follow-up	Percent Distant Recurrence Free at Last Follow-up
SBRT	56	7	49	87.50
Surgery	56	10	46	82.14
	112	17	95	84.82

4-5C).

Group	Year	Percent Distant Recurrence Free	95% Confidence Interval	
SBRT	1	0.94505	0.83914	0.98195
SBRT	2	0.91880	0.79472	0.96927
SBRT	3	0.86138	0.66122	0.94759
SBRT	4	0.67833	0.36853	0.85993
SBRT	5	0.67833	0.36853	0.85993
Surgery	1	0.86875	0.74415	0.93521
Surgery	2	0.86875	0.74415	0.93521
Surgery	3	0.84073	0.70348	0.91798
Surgery	4	0.81070	0.66199	0.89874
Surgery	5	0.81070	0.66199	0.89874

Online supplement, Appendix 1.

Appendix 1. Adult Comorbidity Evaluation-27

Identify the important medical comorbidities and grade severity using the index. Overall comorbidity Score is defined according to the highest ranked single ailment, except in the case where two or more Grade 2 ailments occur in different organ systems. In this situation, the overall comorbidity score should be designated Grade 3.

Cogent comorbid ailment	Grade 3	Grade 2	Grade 1
Cardiovascular System			
Myocardial Infarct	<input type="radio"/> MI \leq 6 months	<input type="radio"/> MI $>$ 6 months ago	<input type="radio"/> MI by ECG only, age undetermined
Angina / Coronary Artery Disease	<input type="radio"/> Unstable angina	<input type="radio"/> Chronic exertional angina <input type="radio"/> Recent (\leq 6 months) Coronary Artery Bypass Graft (CABG) or Percutaneous Transluminal Coronary Angioplasty (PTCA)	<input type="radio"/> ECG or stress test evidence or catheterization evidence of coronary disease without symptoms <input type="radio"/> Angina pectoris not requiring hospitalization
Congestive Heart Failure (CHF)	<input type="radio"/> Hospitalized for CHF within past 6 months <input type="radio"/> Ejection fraction $<$ 20%	<input type="radio"/> Hospitalized for CHF $>$ 6 months prior <input type="radio"/> CHF with dyspnea which limits activities	<input type="radio"/> CHF with dyspnea which has responded to treatment <input type="radio"/> Exertional dyspnea
Arrhythmias	<input type="radio"/> Ventricular arrhythmia \leq 6 months	<input type="radio"/> Ventricular arrhythmia $>$ 6 months <input type="radio"/> Chronic atrial fibrillation or flutter	<input type="radio"/> Sick Sinus Syndrome <input type="radio"/> Supraventricular tachycardia
Hypertension	<input type="radio"/> DBP \geq 130 mm Hg <input type="radio"/> Severe malignant papilledema or other eye changes	<input type="radio"/> DBP 115-129 mm Hg <input type="radio"/> DBP 90-114 mm Hg while taking antihypertensive medications	<input type="radio"/> DBP 90-114 mm Hg while <u>not</u> taking antihypertensive medications <input type="radio"/> DBP $<$ 90 mm Hg while taking antihypertensive medications
Venous Disease	<input type="radio"/> Recent PE (\leq 6 mos.) <input type="radio"/> Use of venous filter for PE's	<input type="radio"/> DVT controlled with Coumadin or heparin	<input type="radio"/> Old DVT no longer treated with Coumadin or Heparin
Peripheral Arterial Disease	<input type="radio"/> Bypass or amputation for gangrene or arterial insufficiency $<$ 6 months ago <input type="radio"/> Untreated thoracic or abdominal aneurysm (\geq 6 cm)	<input type="radio"/> Bypass or amputation for gangrene or arterial insufficiency $>$ 6 months ago <input type="radio"/> Chronic insufficiency	<input type="radio"/> Intermittent claudication <input type="radio"/> Untreated thoracic or abdominal aneurysm ($<$ 6 cm)
Respiratory System			
	<input type="radio"/> Marked pulmonary insufficiency <input type="radio"/> Restrictive Lung Disease or COPD with dyspnea at rest despite treatment <input type="radio"/> Chronic supplemental O ₂	<input type="radio"/> Restrictive Lung Disease or COPD (chronic bronchitis, emphysema, or asthma) with dyspnea which limits activities <input type="radio"/> FEV1 (51%-65%)	<input type="radio"/> Restrictive Lung Disease or COPD (chronic bronchitis, emphysema, or asthma) with dyspnea which has responded to treatment <input type="radio"/> FEV1 (66%-80%)
Gastrointestinal System			

Hepatic	<input type="radio"/> Portal hypertension and/or esophageal bleeding \leq 6 mos. (Encephalopathy, Ascites, Jaundice with Total Bilirubin $>$ 2)	<input type="radio"/> Chronic hepatitis, cirrhosis, portal hypertension with moderate symptoms "compensated hepatic failure"	<input type="radio"/> Chronic hepatitis or cirrhosis without portal hypertension <input type="radio"/> Acute hepatitis without cirrhosis <input type="radio"/> Chronic liver disease manifested on
Stomach / Intestine	<input type="radio"/> Recent ulcers (\leq 6 months ago) requiring blood transfusion	<input type="radio"/> Ulcers requiring surgery or transfusion $>$ 6 months ago	<input type="radio"/> Diagnosis of ulcers treated with meds <input type="radio"/> Chronic malabsorption syndrome <input type="radio"/> Inflammatory bowel disease (IBD) on
Pancreas	<input type="radio"/> Acute or chronic pancreatitis with major complications (phlegmon, abscess, or pseudocyst)	<input type="radio"/> Uncomplicated acute pancreatitis <input type="radio"/> Chronic pancreatitis with minor complications (malabsorption, impaired glucose tolerance, or GI	<input type="radio"/> Chronic pancreatitis w/o complications
Renal System			
End-stage renal disease	<input type="radio"/> Creatinine $>$ 3 mg% with multi-organ failure, shock, or sepsis	<input type="radio"/> Chronic Renal Insufficiency with creatinine $>$ 3 mg%	<input type="radio"/> Chronic Renal Insufficiency with creatinine 2-3 mg%.
Endocrine System (Code the comorbid ailments with the (*) in both the Endocrine system and other organ systems if applicable)			
Diabetes Mellitus	<input type="radio"/> Hospitalization \leq 6 months for DKA <input type="radio"/> Diabetes causing end-organ failure <input type="radio"/> retinopathy <input type="radio"/> neuropathy	<input type="radio"/> IDDM without complications <input type="radio"/> Poorly controlled AODM with oral agents	<input type="radio"/> AODM controlled by oral agents only
Neurological System			
Stroke	<input type="radio"/> Acute stroke with significant neurologic deficit	<input type="radio"/> Old stroke with neurologic residual	<input type="radio"/> Stroke with no residual
Dementia	<input type="radio"/> Severe dementia requiring full support for activities of daily living	<input type="radio"/> Moderate dementia (not completely self-sufficient, needs	<input type="radio"/> Mild dementia (can take care of self)
Paralysis	<input type="radio"/> Paraplegia or hemiplegia requiring full support for activities of daily living	<input type="radio"/> Paraplegia or hemiplegia requiring wheelchair, able to do some self care	<input type="radio"/> Paraplegia or hemiplegia, ambulatory and providing most of
Neuromuscular	<input type="radio"/> MS, Parkinson's, Myasthenia Gravis, or other chronic neuromuscular disorder and requiring full support for activities of daily living	<input type="radio"/> MS, Parkinson's, Myasthenia Gravis, or other chronic neuromuscular disorder, but able to do some self care	<input type="radio"/> MS, Parkinson's, Myasthenia Gravis, or other chronic neuromuscular disorder, but ambulatory and providing most of self care
Psychiatric			
	<input type="radio"/> Recent suicidal attempt <input type="radio"/> Active schizophrenia	<input type="radio"/> Depression or bipolar disorder uncontrolled	<input type="radio"/> Depression or bipolar disorder controlled w/ medication
Rheumatologic (Incl. Rheumatoid Arthritis, Systemic Lupus, Mixed Connective Tissue Disorder, Polymyositis, Rheumatic Polymyositis)			
	<input type="radio"/> Connective Tissue Disorder with secondary end-organ failure (renal, cardiac, CNS)	<input type="radio"/> Connective Tissue Disorder on steroids or immunosuppressant	<input type="radio"/> Connective Tissue Disorder on NSAIDs or no treatment
Immunological System (AIDS should not be considered a comorbidity for Kaposi's Sarcoma or Non-Hodgkin's Lymphoma)			
AIDS	<input type="radio"/> Fulminant AIDS w/KS, MAI, PCP (AIDS defining illness)	<input type="radio"/> HIV+ with h/o defining illness. CD4 ⁺ $<$ 200/ μ L	<input type="radio"/> Asymptomatic HIV+ patient. <input type="radio"/> HIV ⁺ w/o h/o AIDS defining illness.
Malignancy (Excluding Cutaneous Basal Cell Ca., Cutaneous SCCA, Carcinoma in-situ, and Intraepithelial Neoplasm)			

Solid Tumor including melanoma	<input type="radio"/> Uncontrolled cancer <input type="radio"/> Newly diagnosed but not yet treated	<input type="radio"/> Any controlled solid tumor without documented metastases, but initially diagnosed and treated	<input type="radio"/> Any controlled solid tumor without documented metastases, but initially diagnosed and treated > 5 years ago
Leukemia and	<input type="radio"/> Relapse	<input type="radio"/> 1 st remission or new dx <1yr	<input type="radio"/> H/o leukemia or myeloma with last
Lymphoma	<input type="radio"/> Relapse	<input type="radio"/> 1 st remission or new dx <1yr	<input type="radio"/> H/o lymphoma w/ last Rx >1 yr prior
Substance Abuse (Must be accompanied by social, behavioral, or medical complications)			
Alcohol	<input type="radio"/> Delirium tremens	<input type="radio"/> Active alcohol abuse with social, behavioral, or medical complications	<input type="radio"/> H/o alcohol abuse but not presently drinking
Illicit Drugs	<input type="radio"/> Acute Withdrawal Syndrome	<input type="radio"/> Active substance abuse with social, behavioral, or medical complications	<input type="radio"/> H/o substance abuse but not presently using
Body Weight			
Obesity		<input type="radio"/> Morbid (i.e., BMI ≥ 38)	

OVERALL COMORBIDITY SCORE (Circle one.)

0
None1
Mild2
Moderate3
Severe9
Unknown