

Supplemental Figure 10

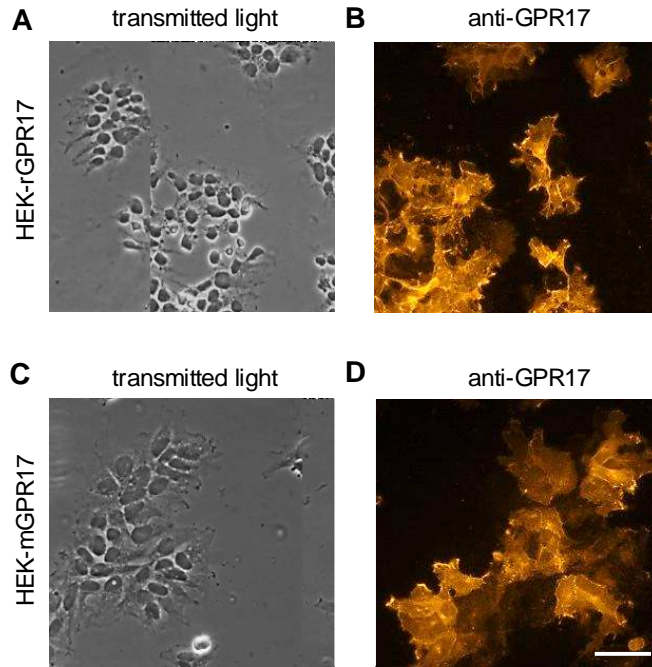


Fig. S10. Mouse and rat orthologs of GPR17 are targeted to the plasma membrane in HEK293 cells engineered to stably express these receptors. (A to D) Transmitted light image and immunocytochemical staining of stable HEK-rGPR17 (A and B) or HEK-mGPR17 (C and D) cells grown on coverslips in 24-well dishes. Cells were fed with rabbit anti-GPR17 antibody and were then fixed and stained for the receptor with Cy3-conjugated goat anti-rabbit antibody. Scale bars 50 μ M.