

Supplemental Figure 15

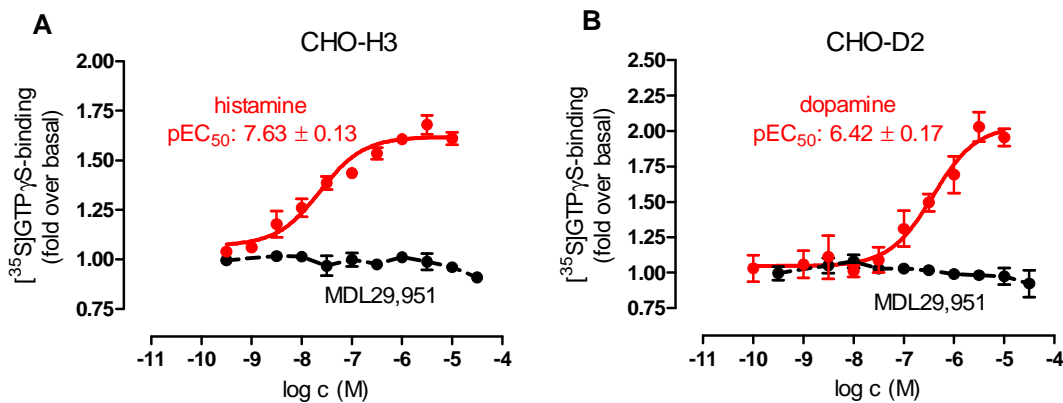


Fig. S15. MDL29,951 does not stimulate loading of $[^{35}\text{S}]\text{GTP}\gamma\text{S}$ to membranes expressing biogenic amine histamine H_3 and dopamine D_2 receptors. $[^{35}\text{S}]\text{GTP}\gamma\text{S}$ binding to H_3 -expressing cell membranes (**A**) or D_2 -expressing membranes (**B**). Histamine and dopamine were used as controls for full stimulation of receptors. Data are mean \pm S.E.M., $n = 3$ independent experiments, each performed in triplicate.