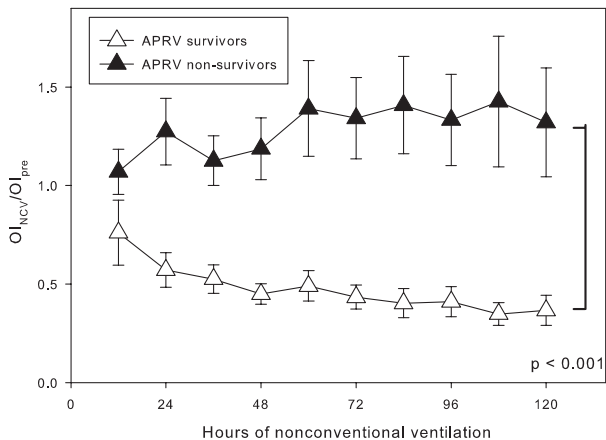
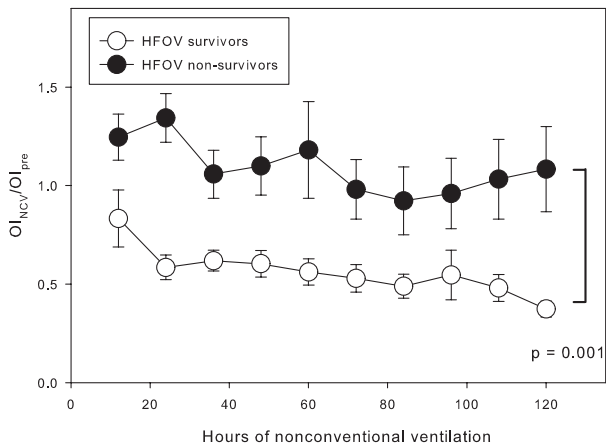


A**B**

Supplementary Figure 1: Change in fractional OI ($OI_{\text{NCV}}/OI_{\text{pre}}$) over hours of NCV between survivors and non-survivors transitioned to either (A) APRV or (B) HFOV. The OI before transition to nonconventional ventilation is designated OI_{pre} . OI_{NCV} was calculated every 12 hours for the first 5 days after transition, and is reported as a fraction of OI_{pre} . Values of $OI_{\text{NCV}}/OI_{\text{pre}}$ are expressed as mean (\pm sem). Multilevel mixed effects linear regression was used to test the relationship between survival status and the change in OI over time, with a significant effect of survival status on $OI_{\text{NCV}}/OI_{\text{pre}}$ over time in both APRV ($p < 0.001$) and HFOV ($p = 0.001$) cohorts.