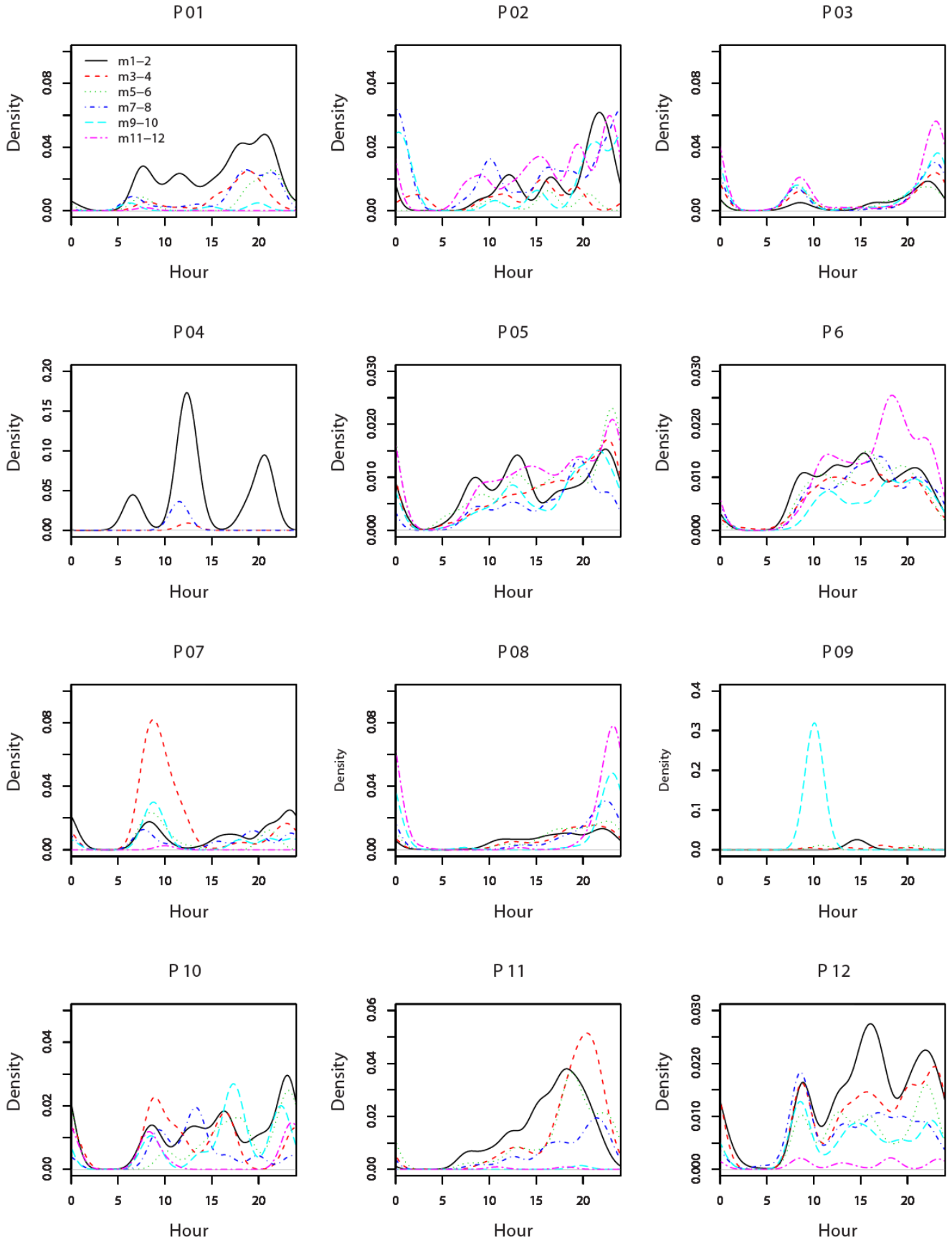


Multimedia Appendix 3 – Kernel density estimates on distribution of time points at which nutrition habit recordings occurred during the day along the trial duration. The legend title “mx-y” means the data from the x-th month to the y-th month. Each density has been adjusted by multiplying it by the proportion of the data amount recorded in the corresponding period in relation to the whole trial period.



Number of recordings (N) in each period and proportion of data amount

| Period | m1-2 | | m3-4 | | m5-6 | | m7-8 | | m9-10 | | m11-12 | |
|-------------|------|-------|------|-------|------|-------|------|-------|-------|-------|--------|-------|
| Participant | N | | N | | N | | N | | N | | N | |
| P01 | 316 | 48.5% | 96 | 14.7% | 91 | 14.0% | 126 | 19.3% | 20 | 3.1% | 3 | 0.5% |
| P02 | 68 | 18.2% | 33 | 8.8% | 15 | 4.0% | 98 | 26.3% | 63 | 16.9% | 96 | 25.7% |
| P03 | 522 | 10.9% | 682 | 14.3% | 646 | 13.5% | 771 | 16.1% | 924 | 19.3% | 1240 | 25.9% |
| P04 | 39 | 88.6% | 1 | 2.3% | 0 | 0.0% | 4 | 9.1% | 0 | 0.0% | 0 | 0.0% |
| P05 | 351 | 18.1% | 312 | 16.0% | 384 | 19.8% | 210 | 10.8% | 267 | 13.7% | 420 | 21.6% |
| P06 | 558 | 18.4% | 425 | 14.0% | 502 | 16.5% | 481 | 15.8% | 331 | 10.9% | 741 | 24.4% |
| P07 | 153 | 20.3% | 309 | 41.1% | 91 | 12.1% | 91 | 12.1% | 103 | 13.7% | 5 | 0.7% |
| P08 | 668 | 13.4% | 663 | 13.3% | 754 | 15.1% | 804 | 16.1% | 796 | 16.0% | 1298 | 26.0% |
| P09 | 5 | 7.0% | 5 | 7.0% | 4 | 5.6% | 0 | 0.0% | 57 | 80.3% | 0 | 0.0% |
| P10 | 141 | 25.6% | 103 | 18.7% | 100 | 18.1% | 68 | 12.3% | 98 | 17.8% | 41 | 7.4% |
| P11 | 257 | 31.7% | 243 | 30.0% | 195 | 24.1% | 108 | 13.3% | 3 | 0.4% | 4 | 0.5% |
| P12 | 553 | 30.5% | 416 | 22.9% | 280 | 15.4% | 304 | 16.8% | 225 | 12.4% | 36 | 2.0% |

m1-2 (September 16 2008 – November 15 2008)

m3-4 (November 16 2008 – January 15 2009)

m5-6 (January 16 2009 – March 15 2009)

m7-8 (March 16 2009 – May 15 2009)

m9-10 (May 16 2009 – July 16 2009)

m11-12 (July 16 2009 –)