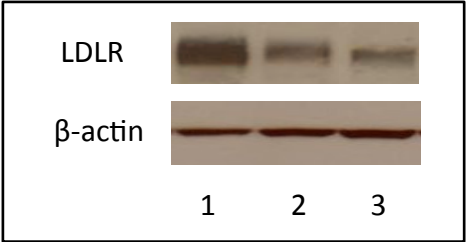


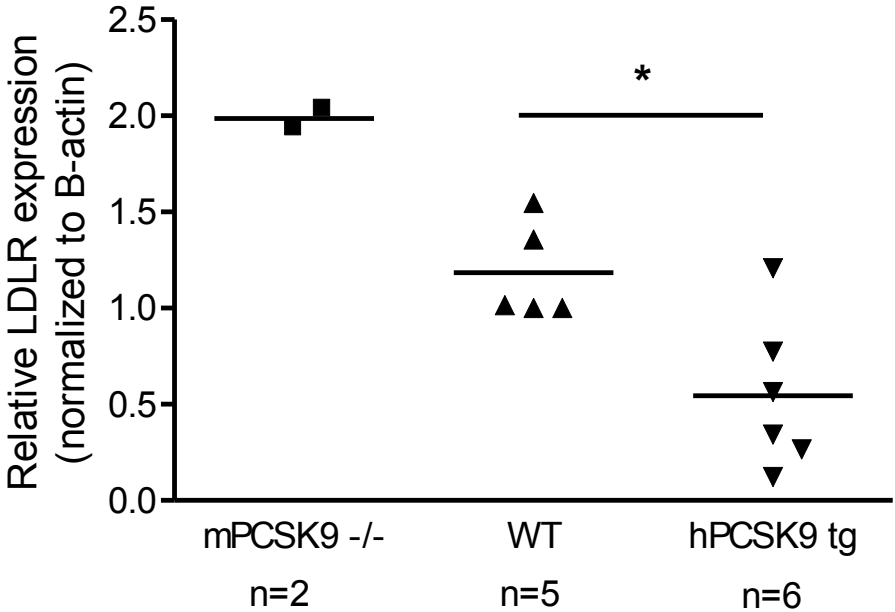
# **SUPPLEMENTAL MATERIAL**

**Supplementary  
Figure 1.**

**A**

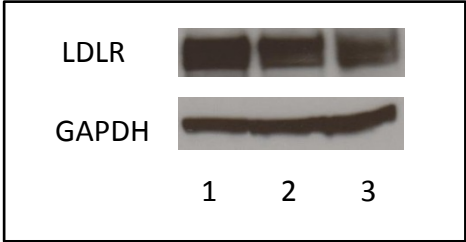


**B**

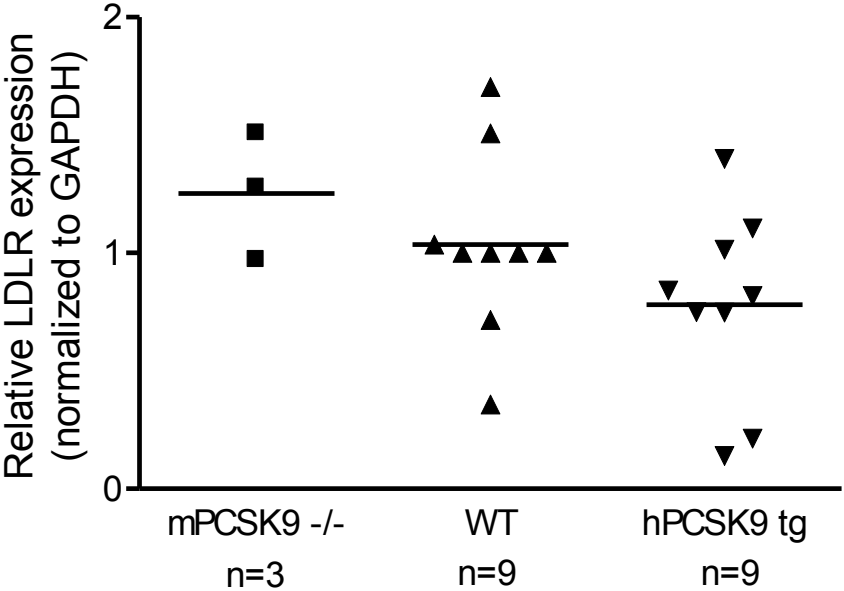


# Supplementary Figure 2.

**A**



**B**



**Supplementary  
Table 1.**

	<b>Mean</b>	<b>SEM</b>
<b><i>SREBP1</i> and Target Genes</b>		
<b><i>SREBP1</i></b>	0.94	0.15
<b><i>DGAT1</i></b>	0.93	0.16
<b><i>SREBP2</i> and Target Genes</b>		
<b><i>SREBP2</i></b>	1.10	0.16
<b><i>HMG CoA Reductase</i></b>	1.00	0.15
<b><i>HMG CoA Synthase</i></b>	1.10	0.23
<b><i>SS</i></b>	1.20	0.26
<b><i>LDLR</i></b>	1.04	0.10
<b><i>PCSK9</i></b>	1.06	0.18

**Supplementary  
Table 2.**

	<b>Mean</b>	<b>SEM</b>
<b><i>SREBP1</i> and Target Genes</b>		
<b><i>SREBP1</i></b>	1.07	0.18
<b><i>FAS</i></b>	1.20	0.24
<b><i>SCD</i></b>	0.98	0.13
<b><i>DGAT1</i></b>	1.03	0.19
<b><i>SREBP2</i> and Target Genes</b>		
<b><i>SREBP2</i></b>	1.13	0.10
<b><i>LDLR</i></b>	1.08	0.15
<b><i>PCSK9</i></b>	0.99	0.25

## Supplementary Legends.

**Supplementary Figure 1. LDLR Levels in the Small Intestine of mPCSK9<sup>-/-</sup>, WT and hPCSK9 tg Mice.** (A) Immunoblot showing LDLR and  $\beta$ -actin in the small intestine. Lane 1: mPCSK9<sup>-/-</sup>; lane 2: WT; lane 3: hPCSK9 tg. (B) Quantitative analysis of LDLR protein levels normalized to  $\beta$ -actin in the small intestine. (One-Way ANOVA: \*p<0.05, \*\*\* p<0.001).

**Supplementary Figure 2. LDLR Levels in the Large Intestine of mPCSK9<sup>-/-</sup>, WT and hPCSK9 tg Mice.** (A) Immunoblot showing LDLR and GAPDH in the large intestine. Lane 1: mPCSK9<sup>-/-</sup>; lane 2: WT; lane 3: hPCSK9 tg. (B) Quantitative analysis of LDLR protein levels normalized to GAPDH in the large intestine.

**Supplemental Table 1.** Fold Change in Gene Expression Levels in PCSK9 Treated CaCo-2 Cells (10  $\mu$ g/mL, 24 Hours) from Control Untreated Levels. All Data in the Current Table Show Data with Expression Levels which are Not Significantly Different from Control Levels.

**Supplemental Table 2.** Fold Change in Gene Expression Levels in siPCSK9 Transfected CaCo-2 Cells (48 Hours) Versus Cells Transfected with a Negative Control Vector. All Data in the Current Table Show Data with Expression Levels which are Not Significantly Different from Control Levels