

Supplementary Online Content

Grobman WA, Bailit JL, Rice MM, et al. Can differences in obstetric outcomes be explained by differences in the care provided? The MFMU Network APEX Study

eFigures 1a-1d. Odds ratios for each hospital for the outcome of postpartum hemorrhage from the following logistic regression models: (a) unadjusted model; (b) model with patient characteristics; (c) model with patient and provider/hospital characteristics; and (d) model with patient, provider/hospital, and care characteristics. The solid line represents the unadjusted model in each figure. Red dots indicate 99% confidence intervals that exclude 1.0.

eFigures 2a-2d. Odds ratios for each hospital for the outcome of peripartum infection from the following logistic regression models: (a) unadjusted model; (b) model with patient characteristics; (c) model with patient and provider/hospital characteristics; and (d) model with patient, provider/hospital, and care characteristics. The solid line represents the unadjusted model in each figure. Red dots indicate 99% confidence intervals that exclude 1.0.

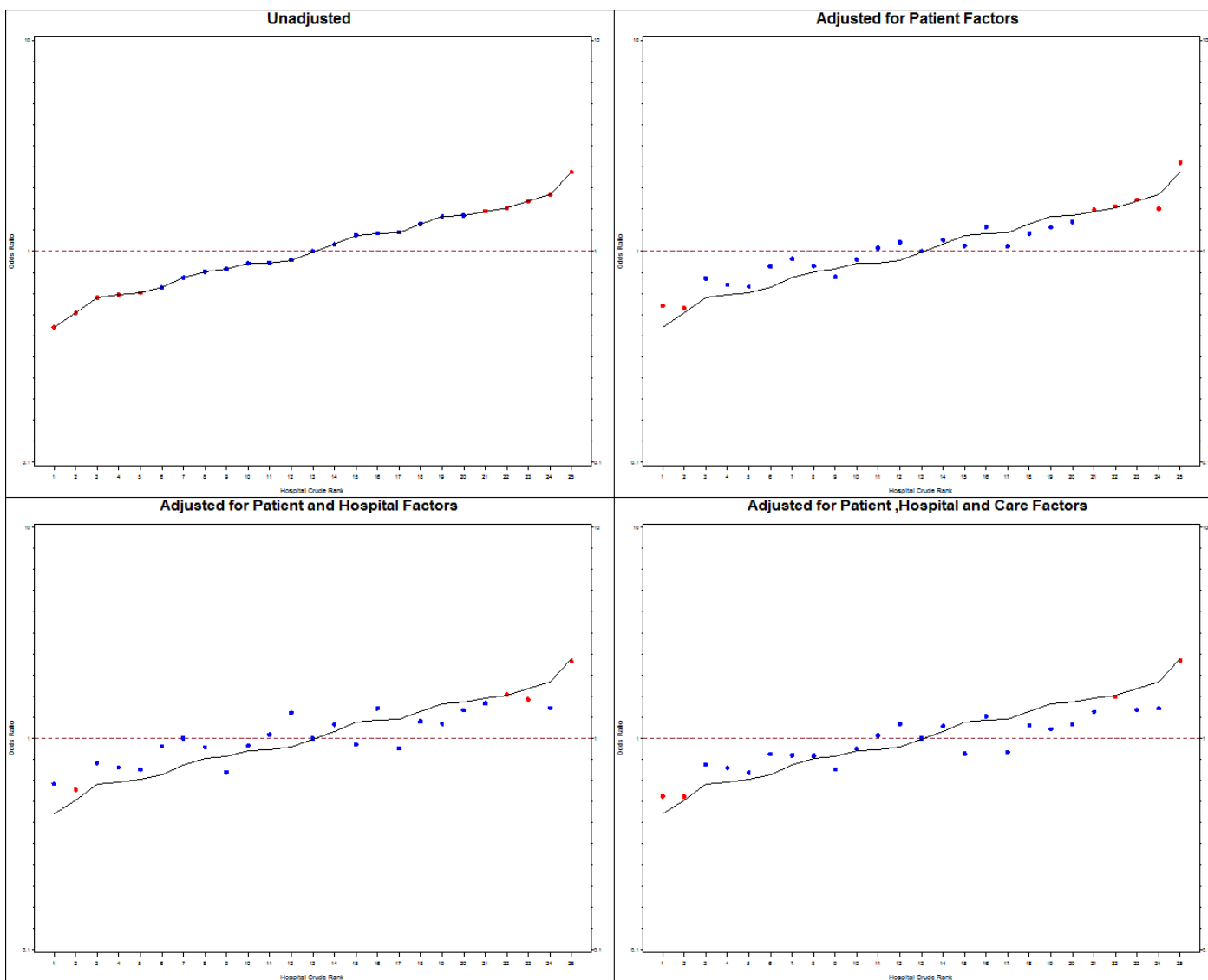
eFigures 3a-3d. Odds ratios for each hospital for the outcome of severe perineal laceration at spontaneous vaginal delivery from the following logistic regression models: (a) unadjusted model; (b) model with patient characteristics; (c) model with patient and provider/hospital characteristics; and (d) model with patient, provider/hospital, and care characteristics. The solid line represents the unadjusted model in each figure. Red dots indicate 99% confidence intervals that exclude 1.0.

eFigures 4a-4c. Odds ratios for each hospital for the outcome of severe perineal laceration at forceps-assisted vaginal delivery from the following logistic regression models: (a) unadjusted model; (b) model with patient characteristics; and (c) model with patient and provider/hospital characteristics. There is no Figure 4d because none of the care characteristics assessed was associated with this outcome. The solid line represents the unadjusted model in each figure. Red dots indicate 99% confidence intervals that exclude 1.0.

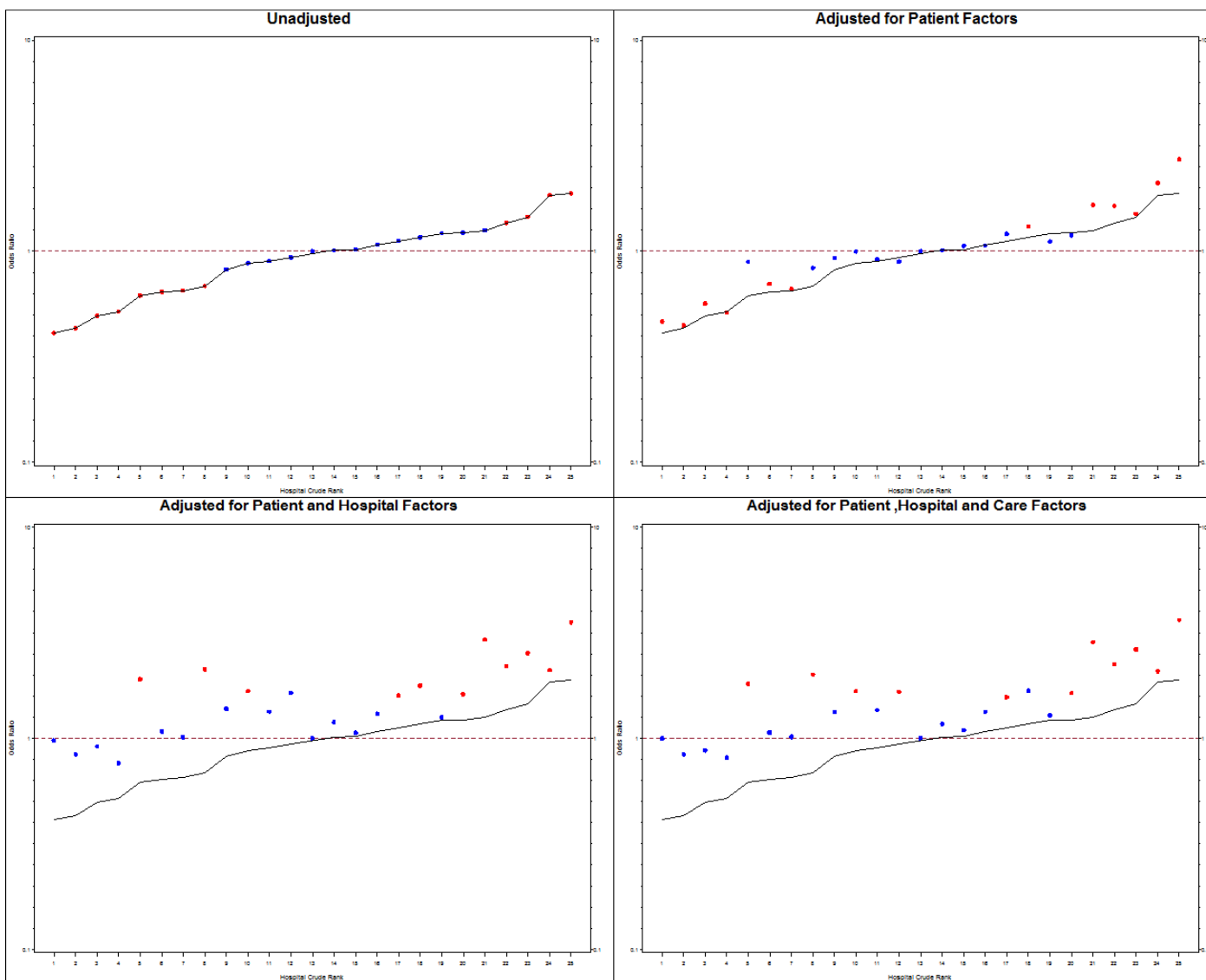
eFigures 5a-5d. Odds ratios for each hospital for the outcome of severe perineal laceration at vacuum-assisted vaginal delivery from the following logistic regression models: (a) unadjusted model; (b) model with patient characteristics; (c) model with patient and provider/hospital characteristics; and (d) model with patient, provider/hospital, and care characteristics. The solid line represents the unadjusted model in each figure. Red dots indicate 99% confidence intervals that exclude 1.0.

eFigures 6a-6d. Odds ratios for each hospital for the composite neonatal adverse outcome from the following logistic regression models: (a) unadjusted model; (b) model with patient characteristics; (c) model with patient and provider/hospital characteristics; and (d) model with patient, provider/hospital, and care characteristics. The solid line represents the unadjusted model in each figure. Red dots indicate 99% confidence intervals that exclude 1.0.

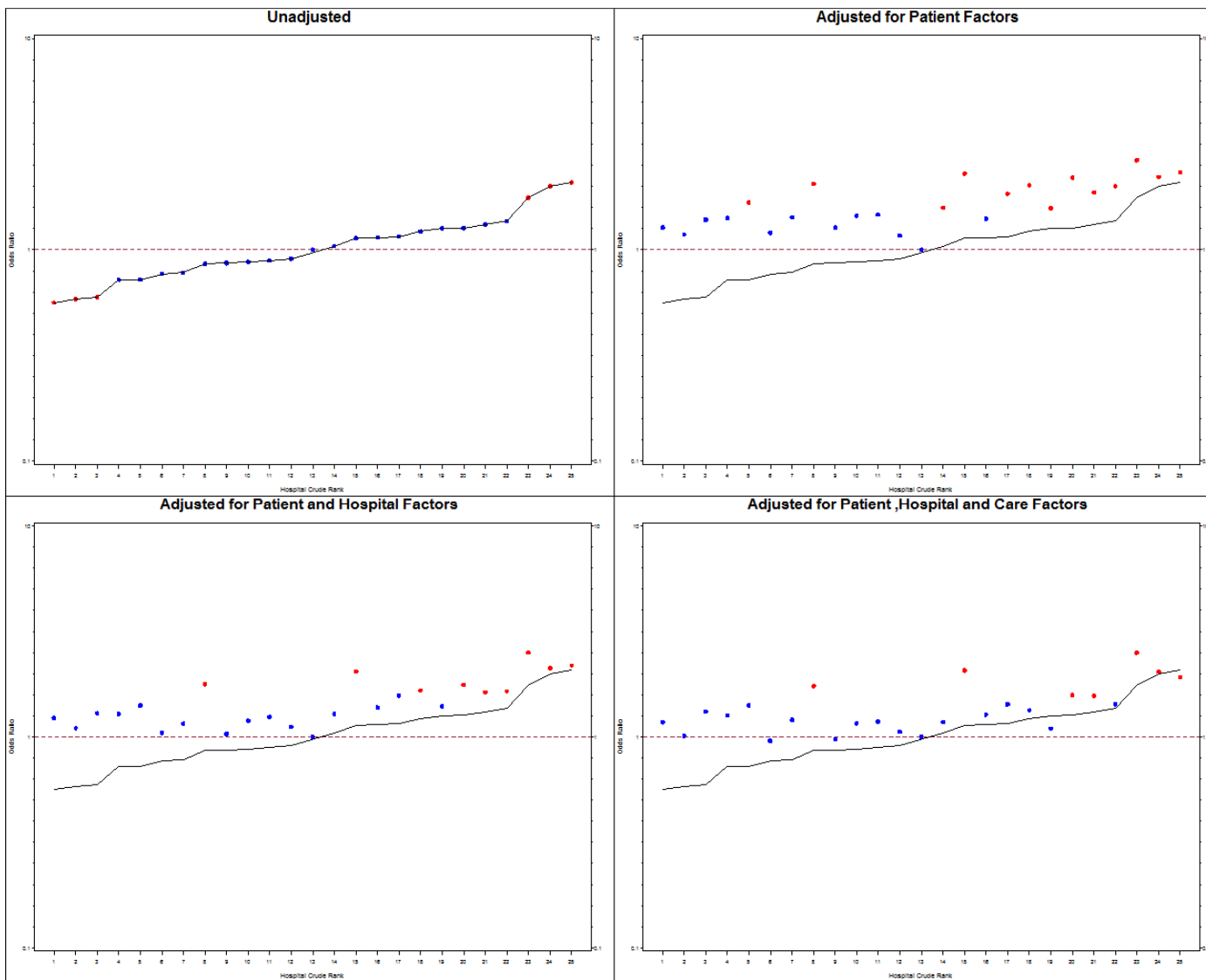
eFigures 1a-1d.



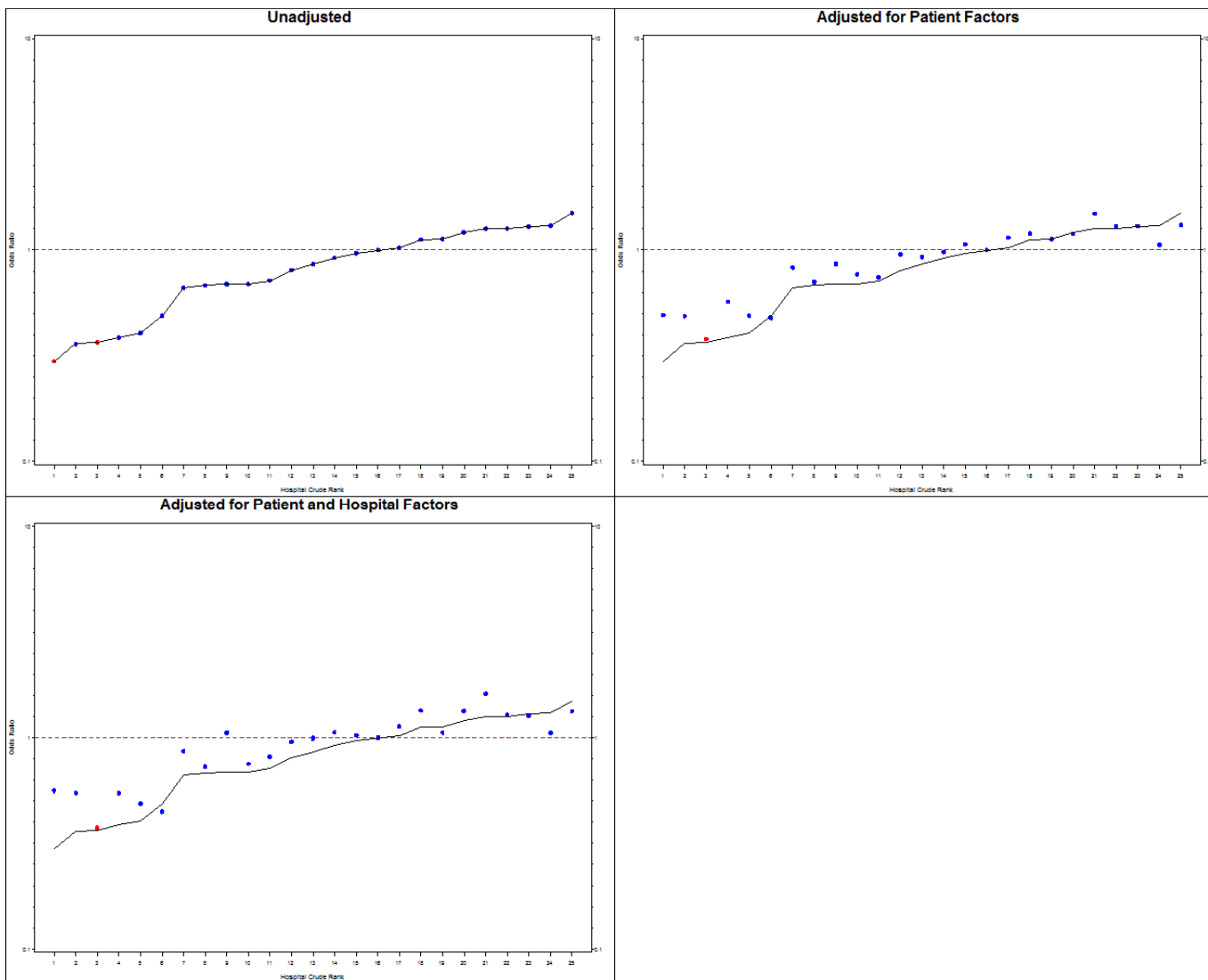
eFigures 2a-2d.



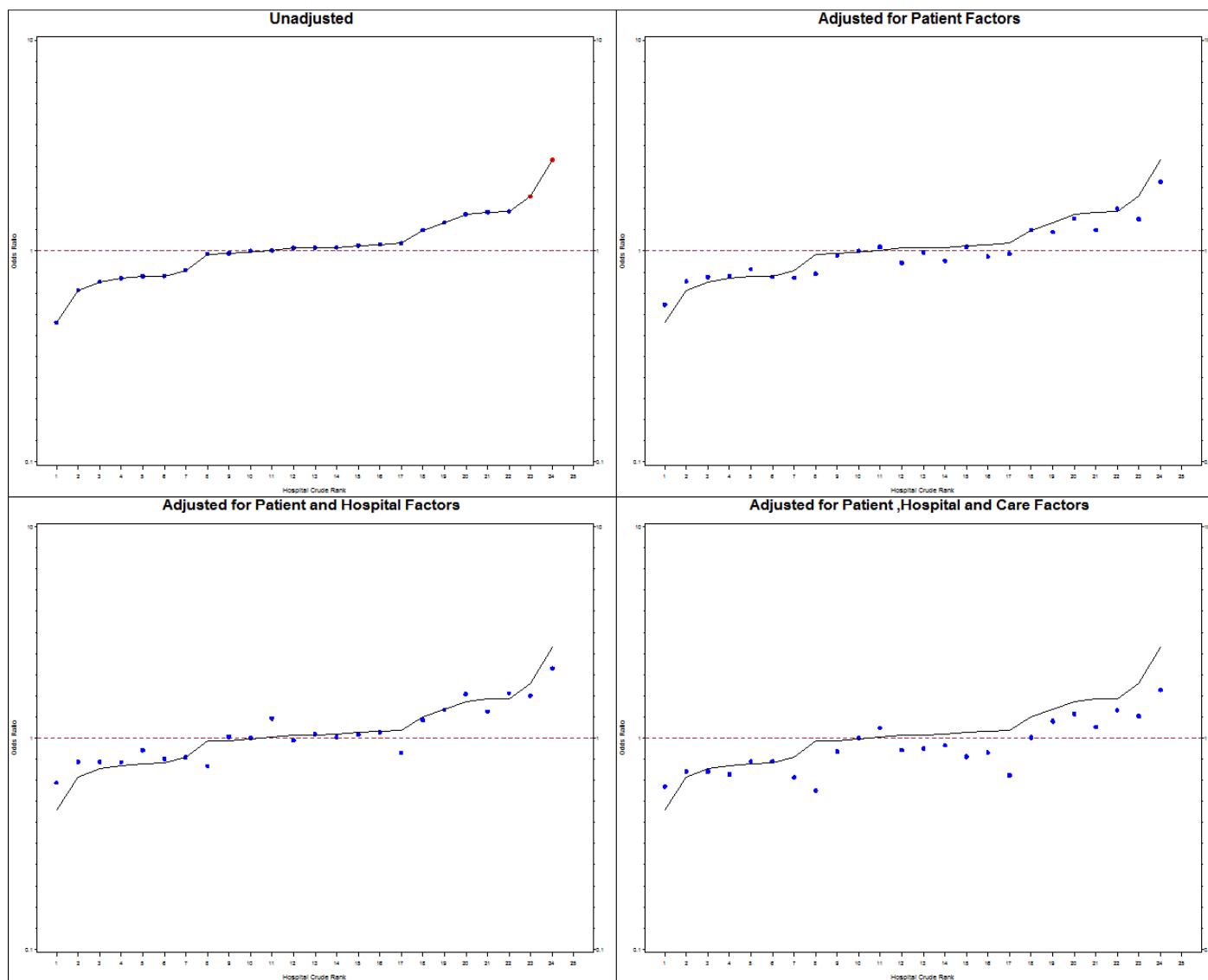
eFigures 3a-3d.



eFigures 4a-4c.



eFigures 5a-5d.



eFigures 6a-6d.

