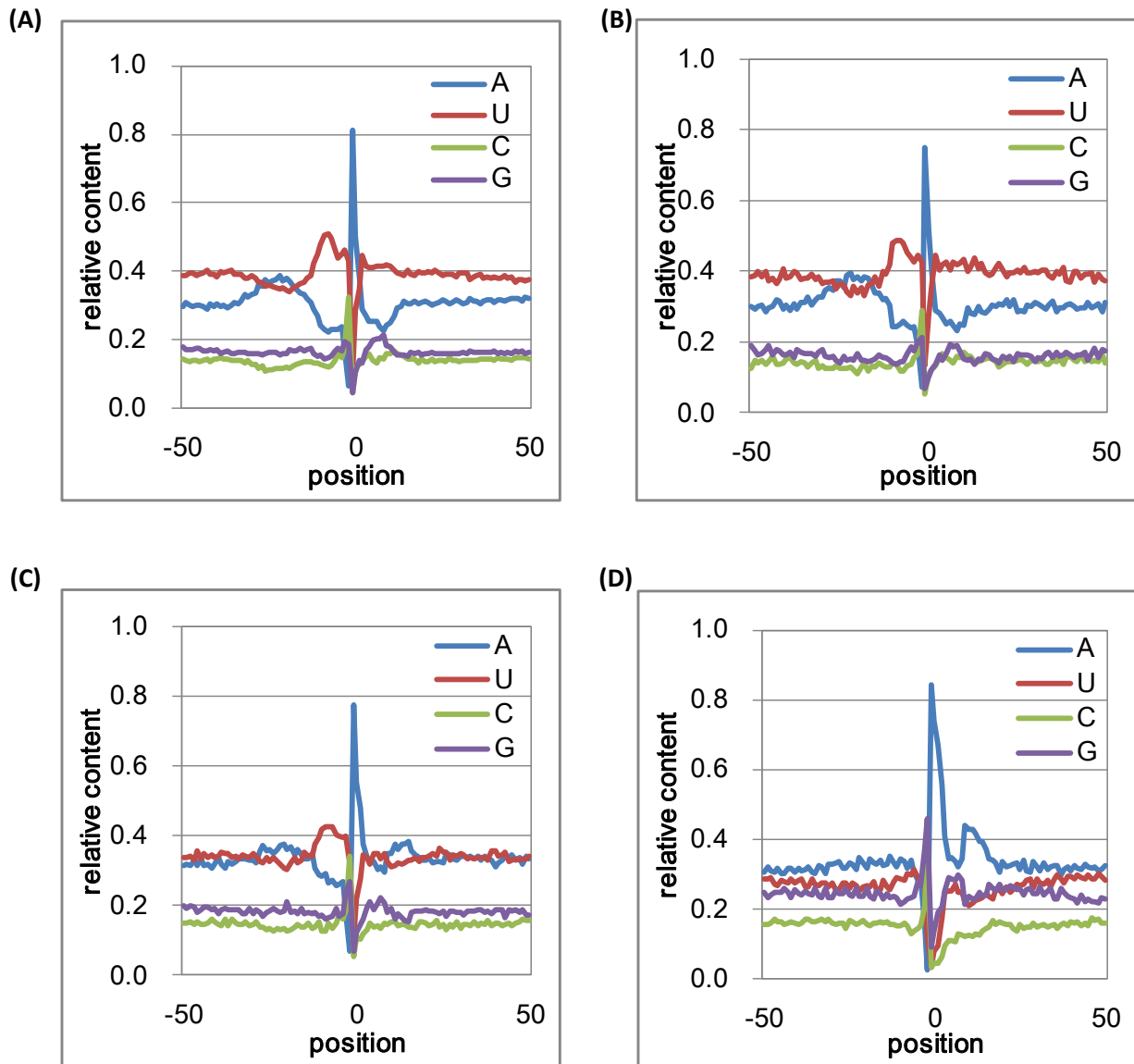
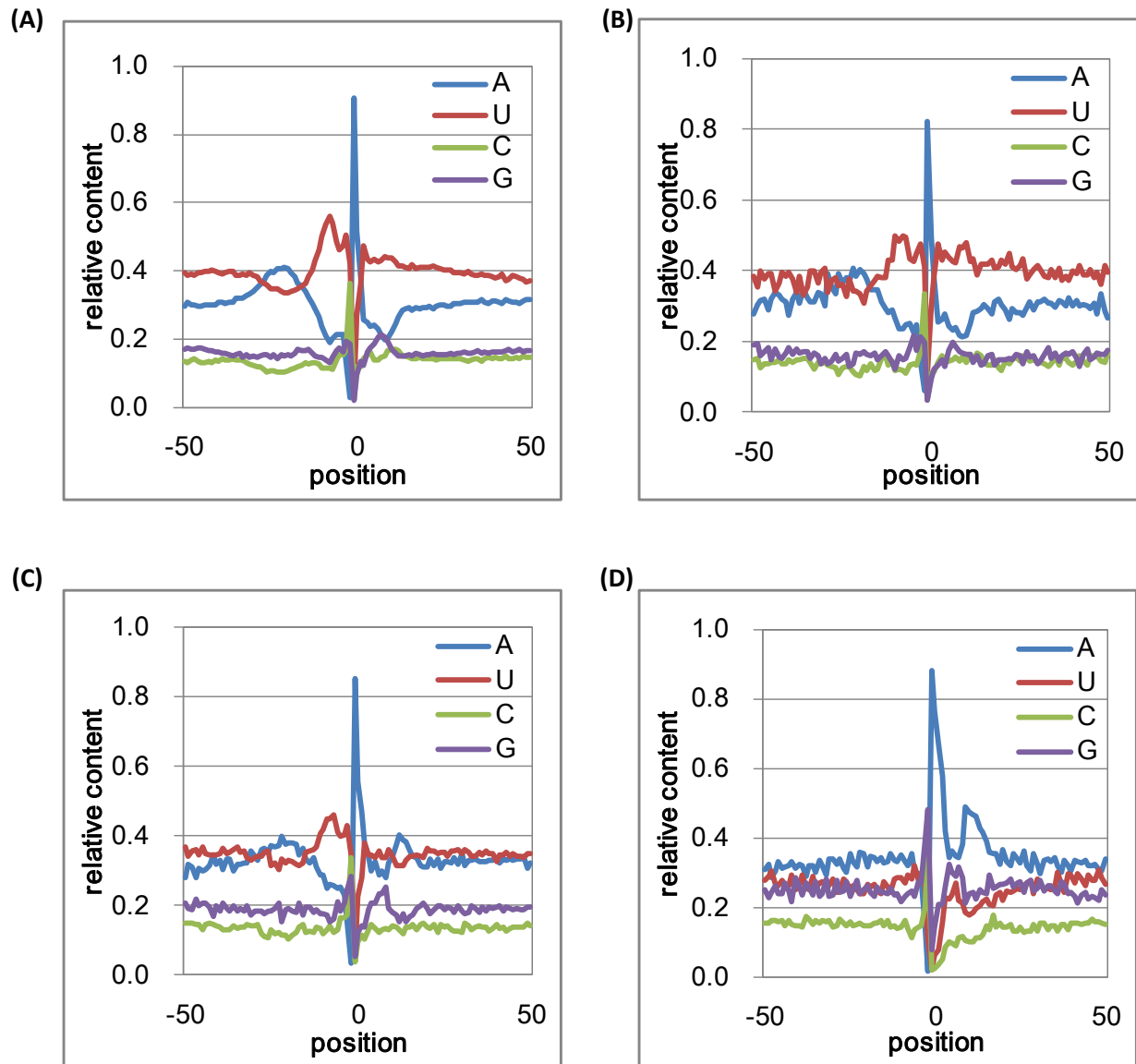


Wu et al., Additional file 2 – Supplemental figures



**Fig. S1 Nucleotide compositions of the sequences surrounding *M. truncatula* PACs defined by single PAT.**

Position-by-position base composition of PACs that map to 3'-UTRs (A), introns (B), intergenic regions (C), protein coding regions (D). Y-axis values are the fractional nucleotide content at each position (plotted along the x-axis); individual traces are color coded as indicated. On the x-axis, "0" denotes the actual cleavage/polyadenylation site.



**Fig. S2 Nucleotide compositions of the sequences surrounding *M. truncatula* PACs defined by multiple PATs.**

Position-by-position base composition of PACs that map to 3'-UTRs (A), introns (B), intergenic regions (C), protein coding regions (D). Y-axis values are the fractional nucleotide content at each position (plotted along the x-axis); individual traces are color coded as indicated. On the x-axis, "0" denotes the actual cleavage/polyadenylation site.