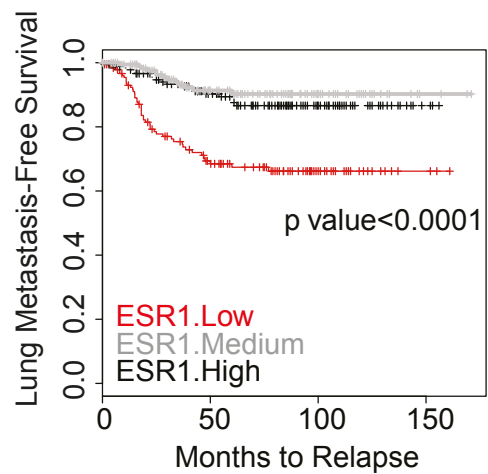
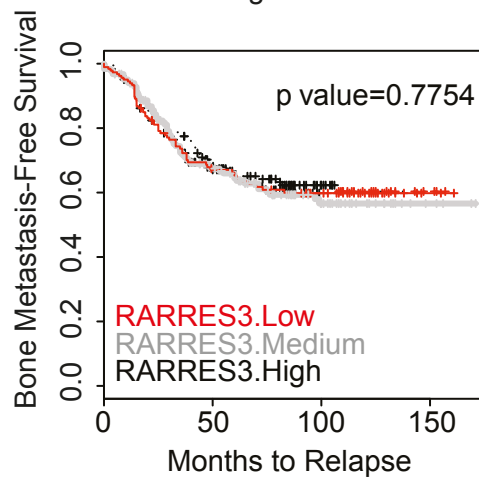


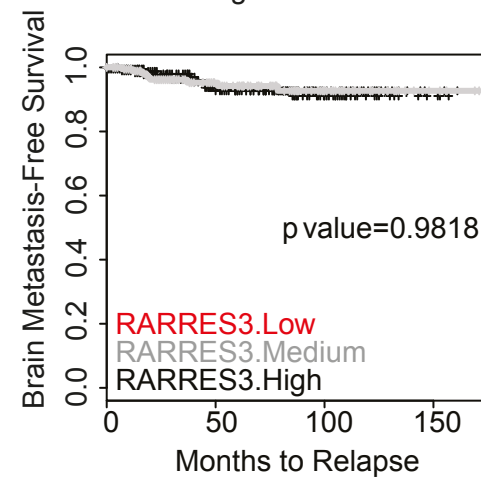
A Human Breast Cancer Primary Tumors  
(MSK/EMC data set)  
n=560



B Human Breast Cancer Primary Tumors  
(MSK/EMC data set)  
ER-negative n=211



C Human Breast Cancer Primary Tumors  
(MSK/EMC data set)  
ER-negative n=211



## Supplementary Figure U1

- (A) Kaplan-Meier representation of the probability of lung metastasis-free survival in the MSK/EMC breast cancer tumor data set (n=560) according to *ESR1* levels of expression. Low, Med and High represent *ESR1* expression levels in the following way: low ( $< \text{mean} - \text{SD}$ ), medium ( $\geq \text{mean} - \text{SD}$  and  $\leq \text{mean} + \text{SD}$ ) and high ( $> \text{mean} + \text{SD}$ ).
- (B) Kaplan-Meier representation of the probability of bone metastasis-free survival in the MSK/EMC breast cancer tumor data set (focused on ER-negative tumors n=211) according to *RARRES3* levels of expression. Low, Med and High represent *RARRES3* expression levels in the following way: low ( $< \text{mean} - \text{SD}$ ), medium ( $\geq \text{mean} - \text{SD}$  and  $\leq \text{mean} + \text{SD}$ ) and high ( $> \text{mean} + \text{SD}$ ).
- (C) Kaplan-Meier representation of the probability of brain metastasis-free survival in the MSK/EMC breast cancer tumor data set (focused on ER-negative tumors n=211) according to *RARRES3* levels of expression. Low, Med and High represent *RARRES3* expression levels in the following way: low ( $< \text{mean} - \text{SD}$ ), medium ( $\geq \text{mean} - \text{SD}$  and  $\leq \text{mean} + \text{SD}$ ) and high ( $> \text{mean} + \text{SD}$ ).