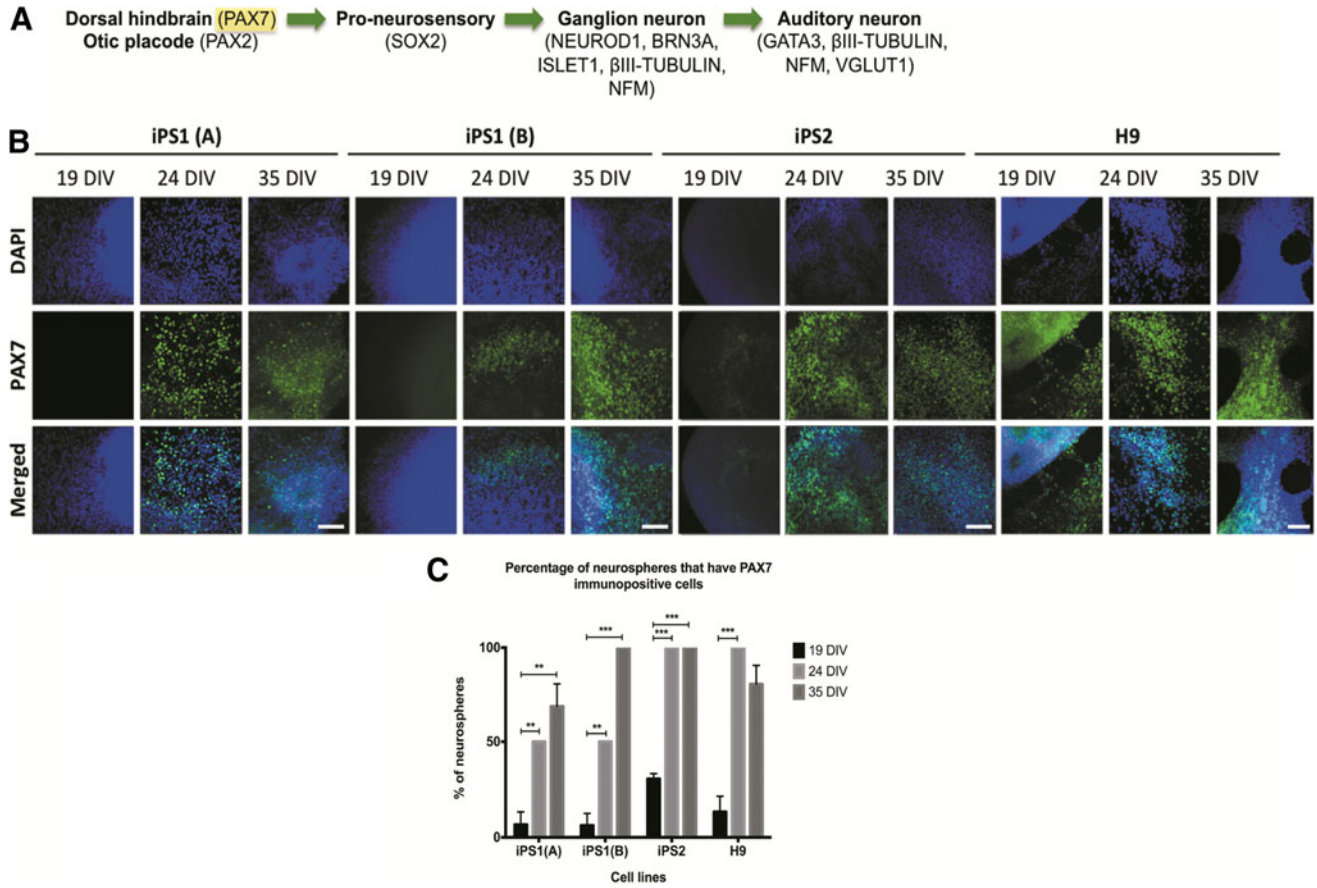


## Supplementary Data



**SUPPLEMENTARY FIG. S1.** Expression of PAX7 in the hiPSC and hESC neurospheres at 19, 24, and 35 DIV. **(A)** Pax7 is expressed in the dorsal hindbrain cells during development. **(B)** Using immunostaining, an increase in the expression of PAX7 was observed at 24 DIV and 35 DIV. Scale bar = 100  $\mu$ m (all images). **(C)** There was a significant increase in the percentages of hiPSC and hESC neurospheres that had PAX7 immunopositive cells at 24 and 35 DIV, compared with its expression at 19 DIV. At 35 DIV, a decrease in the number of neurospheres with PAX7 immunopositive cells was observed in the hESC line. Data obtained from at least three independent experiments and expressed as means  $\pm$  standard error of the mean of triplicates of each sample. \* $p < 0.05$ ; \*\* $p < 0.01$ ; \*\*\* $p < 0.001$ . DIV, days *in vitro*; DAPI, 4',6-diamidino-2-phenylindole; hESC, human embryonic stem cell; hiPSC, human induced pluripotent stem cell.