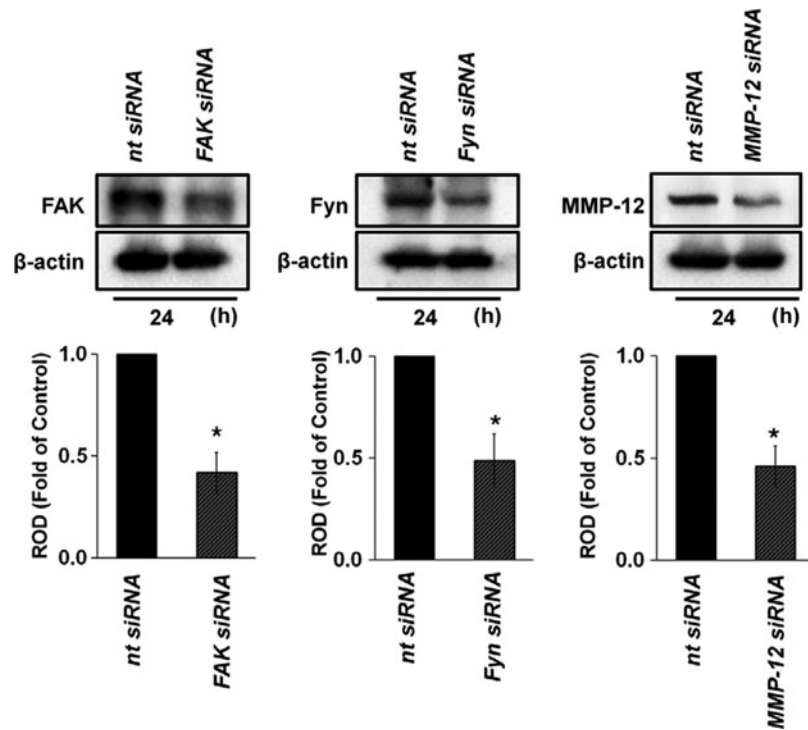


Supplementary Data



SUPPLEMENTARY FIG. S1. Effect of siRNA on target proteins. Cells were transfected for 24 h with *FAK*, *Fyn*, *MMP-12* (200 pM), or nontargeting (*nt*) siRNA (200 pM) using Hyperfectamine. FAK, Fyn, and MMP-12 expression was analyzed using western blot. Error bars represent mean \pm SE from three independent experiments. * $P < 0.05$ versus *nt* siRNA. FAK, focal adhesion kinase; MMP, matrix metalloproteinase; SE, standard errors; siRNA, small interfering RNA.