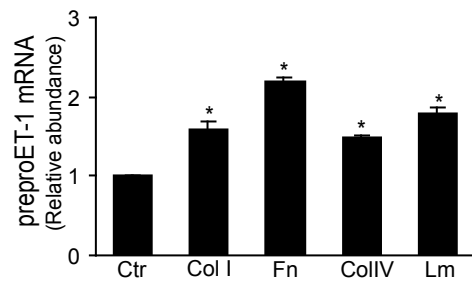


Supplemental Table 1

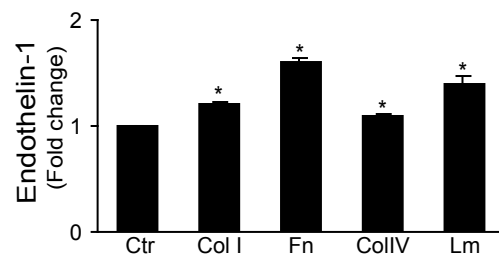
Rat Genes	Genebank	Primer Sequences
preproendothelin-1	M64711	Sense 5' ACTTCTGCCACCTGGACATC 3' Anti-sense: 5' GCTCGGAGTTCTTTGTCTGC 3'
GAPDH	BC087743	Sense: 5' TGCACCACCAACTGCTAAGC 3' Anti-sense: 5' GGCATGGACTGTGGTCATGAG 3'
ECE-1	NM_053596	Sense, 5' GGACTTCTTCAGCTACGCCTGT 3' Anti-sense, 5' CTAGTTTCG TTCATACACGCACG 3'
integrin α 5	XM235707	Sense, 5' GGCAGCTATGGCGTCCC ACTGTGG 3' Anti-sense, 5' GGCATCAGAGGTGGCTGGAGGCTT 3'
integrin β 1	NM_017022	Sense, 5' GTGGTTGCTGGAATTGTTCTTATT 3' Anti-sense, 5' TTTCCCTCATACTTCGGATTGAC 3'

Supplemental Figure 1

A

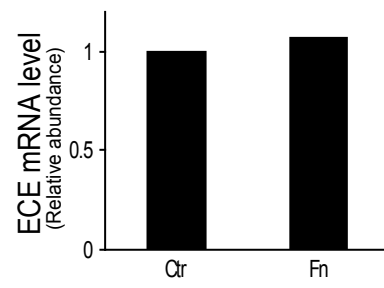


B

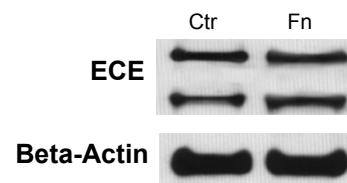


Supplemental Figure 2

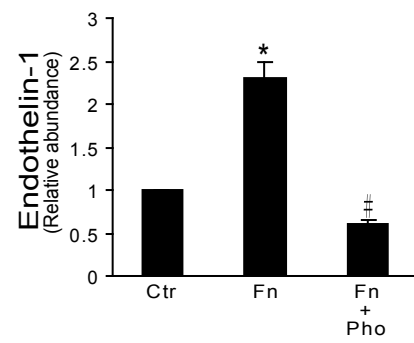
A



B

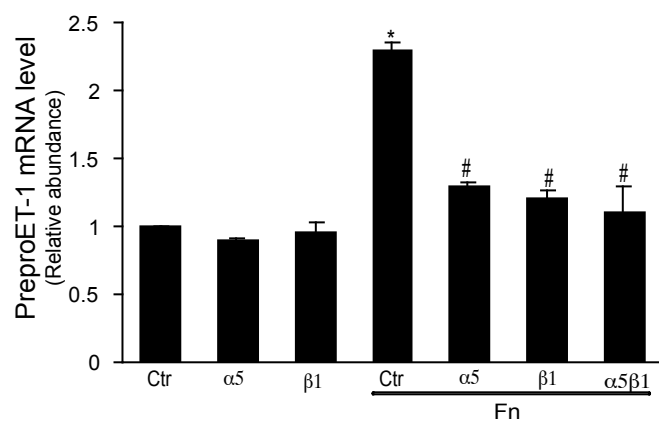


C

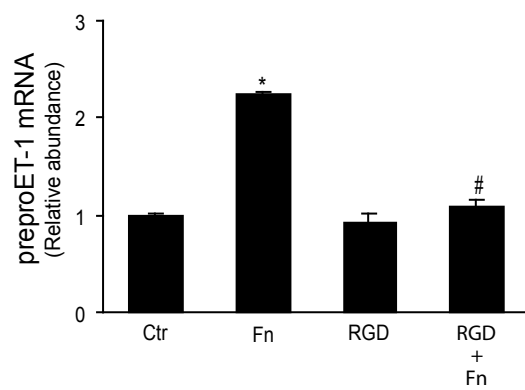


Supplemental Figure 3

A

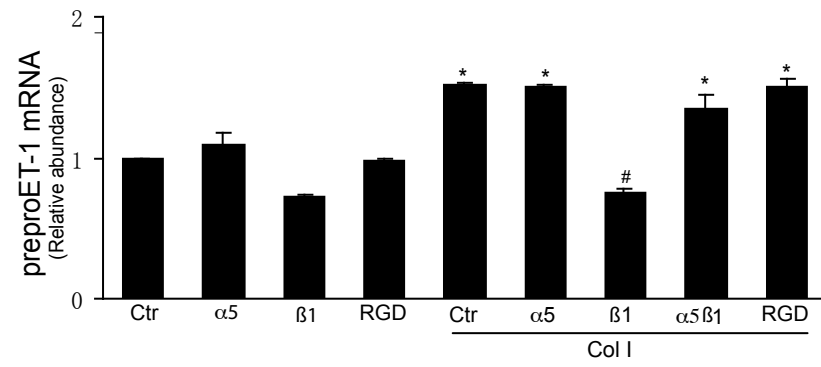


B

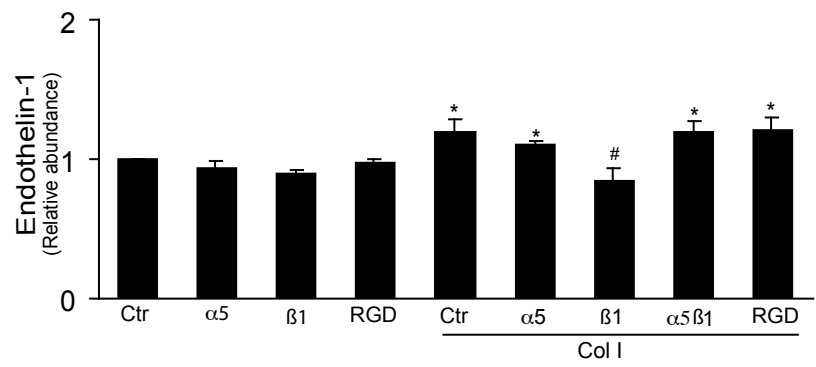


Supplemental Figure 4

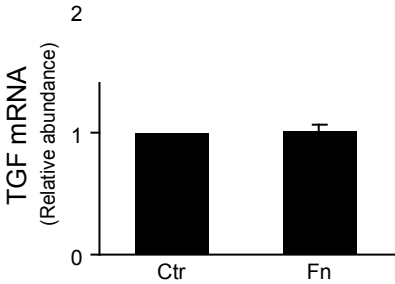
A



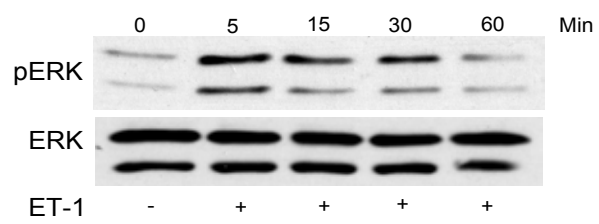
B



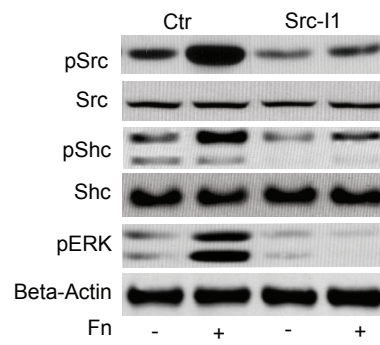
Supplemental Figure 5



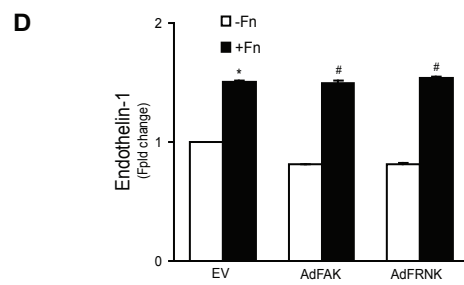
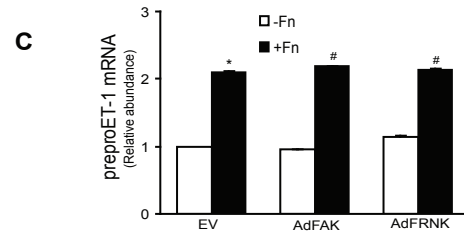
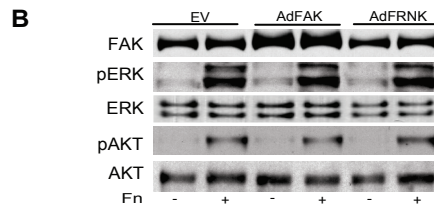
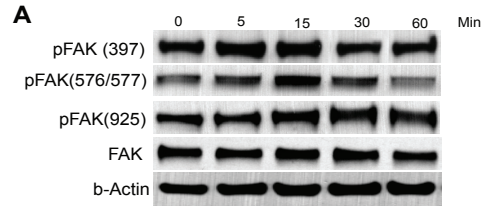
Supplemental Figure 6



Supplemental Figure 7



Supplemental Figure 8



Supplemental Figure 9

