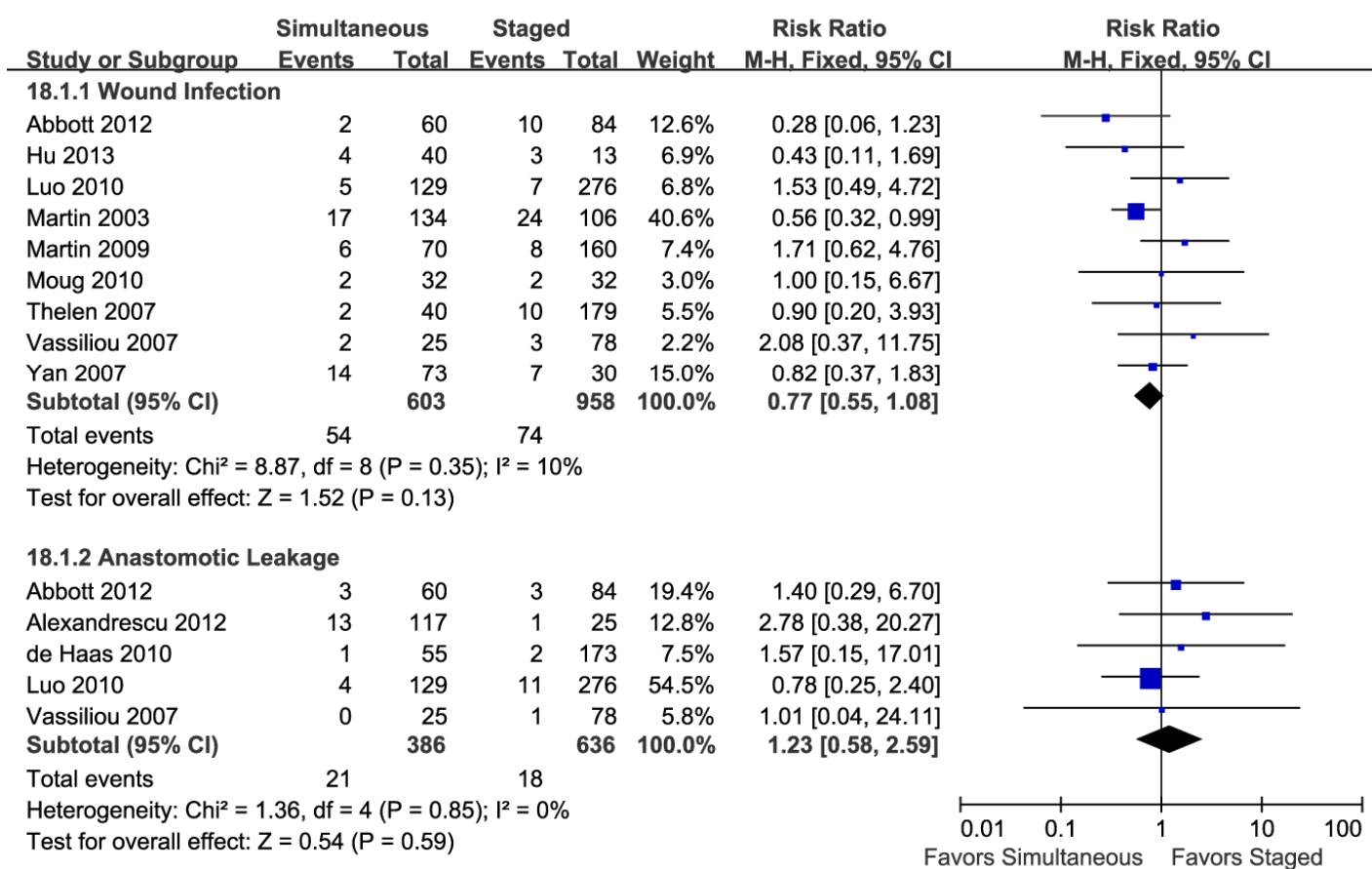


# Figure S2

## Subtype analysis of pooled postoperative morbidity



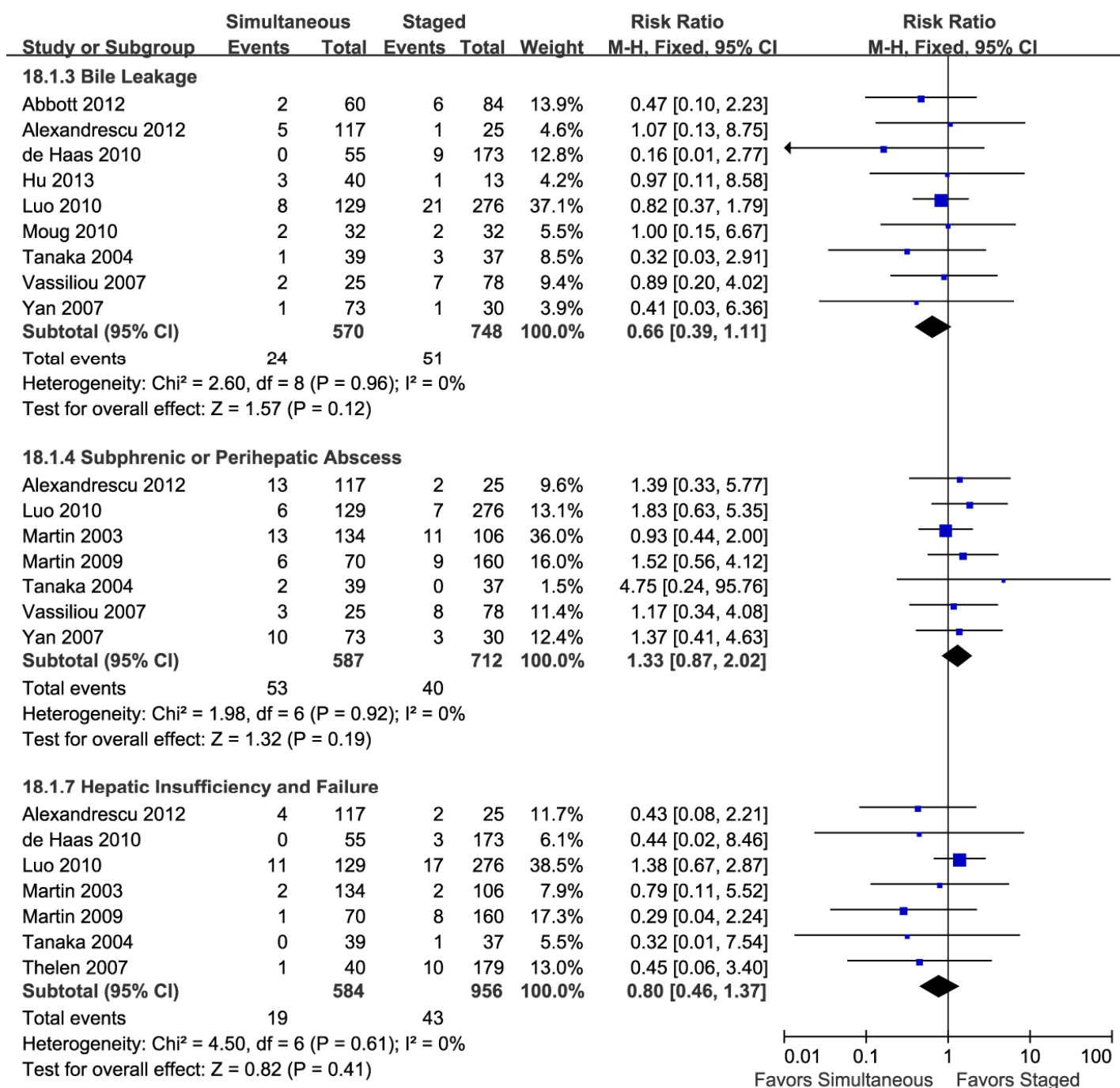
### Forest plots on subtype analysis of postoperative morbidity.

M-H: Mantel-Haenszel method

Favours Simultaneous: Simultaneous group had lower postoperative morbidity.

Favours Staged: Staged group had lower postoperative morbidity.

Pooled result showed no significant difference between simultaneous and staged groups in wound infection and anastomotic leakage.



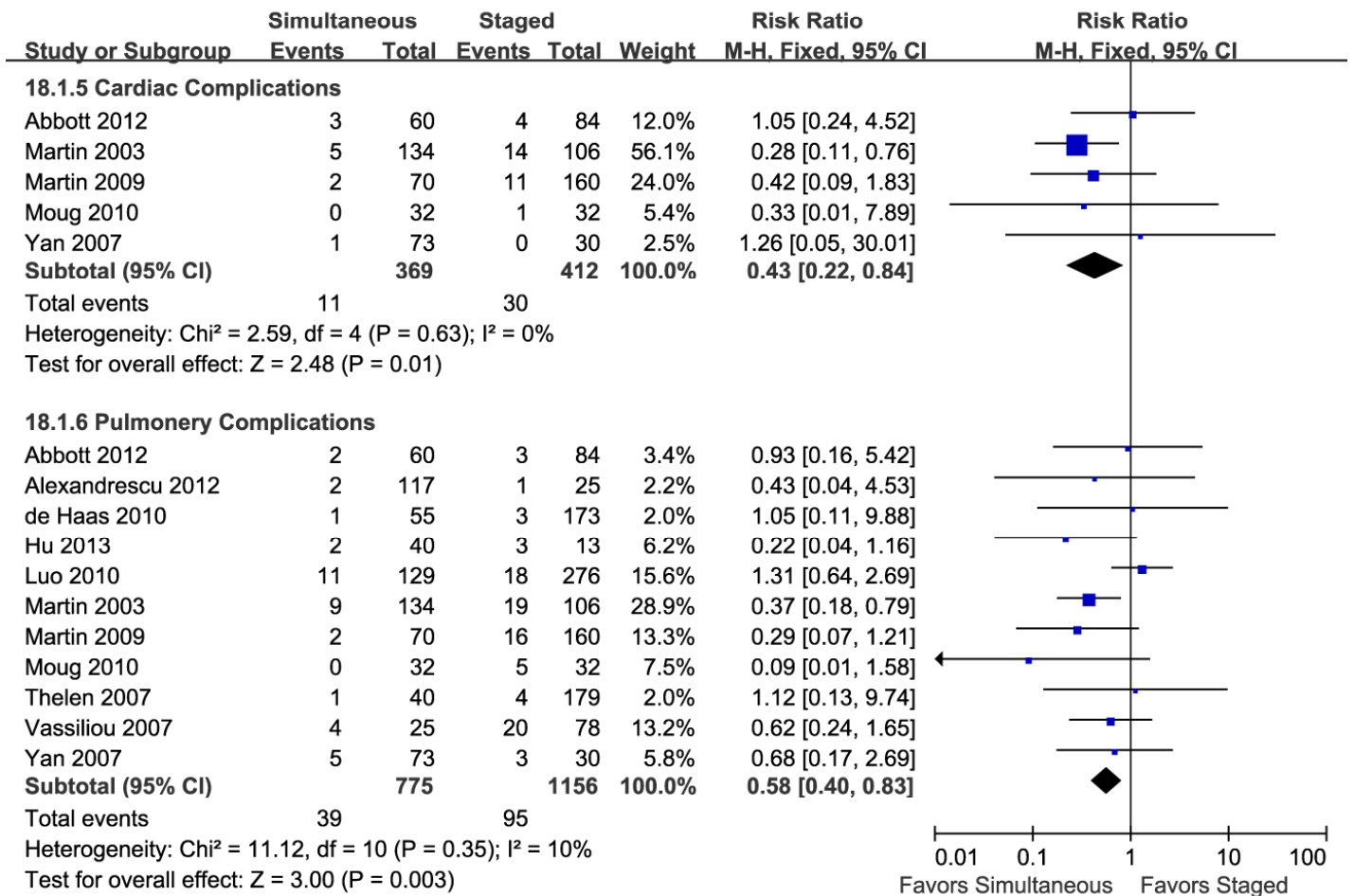
### Forest plots on subtype analysis of postoperative morbidity.

M-H: Mantel-Haenszel method

Favours Simultaneous: Simultaneous group had lower postoperative morbidity.

Favours Staged: Staged group had lower postoperative morbidity.

Pooled result showed no significant difference between simultaneous and staged groups in bile leakage, subphrenic/perihepatic abscess and hepatic insufficiency/failure.



### Forest plots on subtype analysis of postoperative morbidity.

M-H: Mantel-Haenszel method

Favours Simultaneous: Simultaneous group had lower postoperative morbidity.

Favours Staged: Staged group had lower postoperative morbidity.

Pooled result showed that simultaneous resection had significant lower morbidity in cardiac and pulmonary complications.