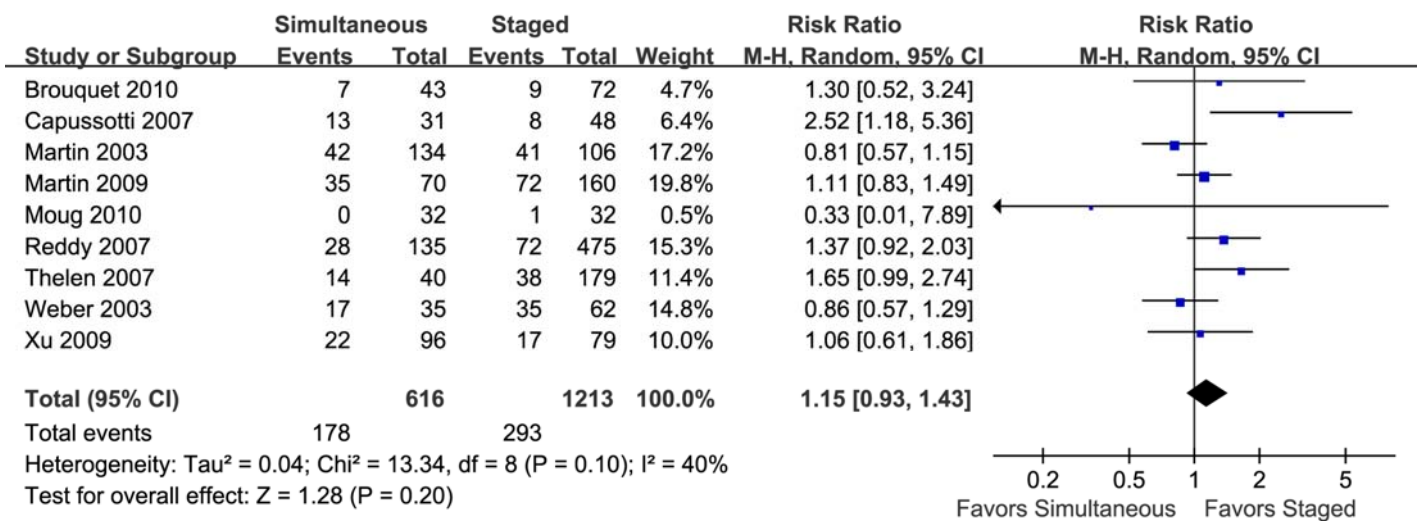


Figure S4

Pooled number of patients need blood transfusion



Forest plots of the pooled results on number of patients need blood transfusion.

M-H: Mantel-Haenszel method

Favours Simultaneous: Simultaneous group had fewer patients need blood transfusion.

Favours Staged: Staged group had fewer patients need blood transfusion.

Pooled result showed no significant difference between simultaneous and staged groups.