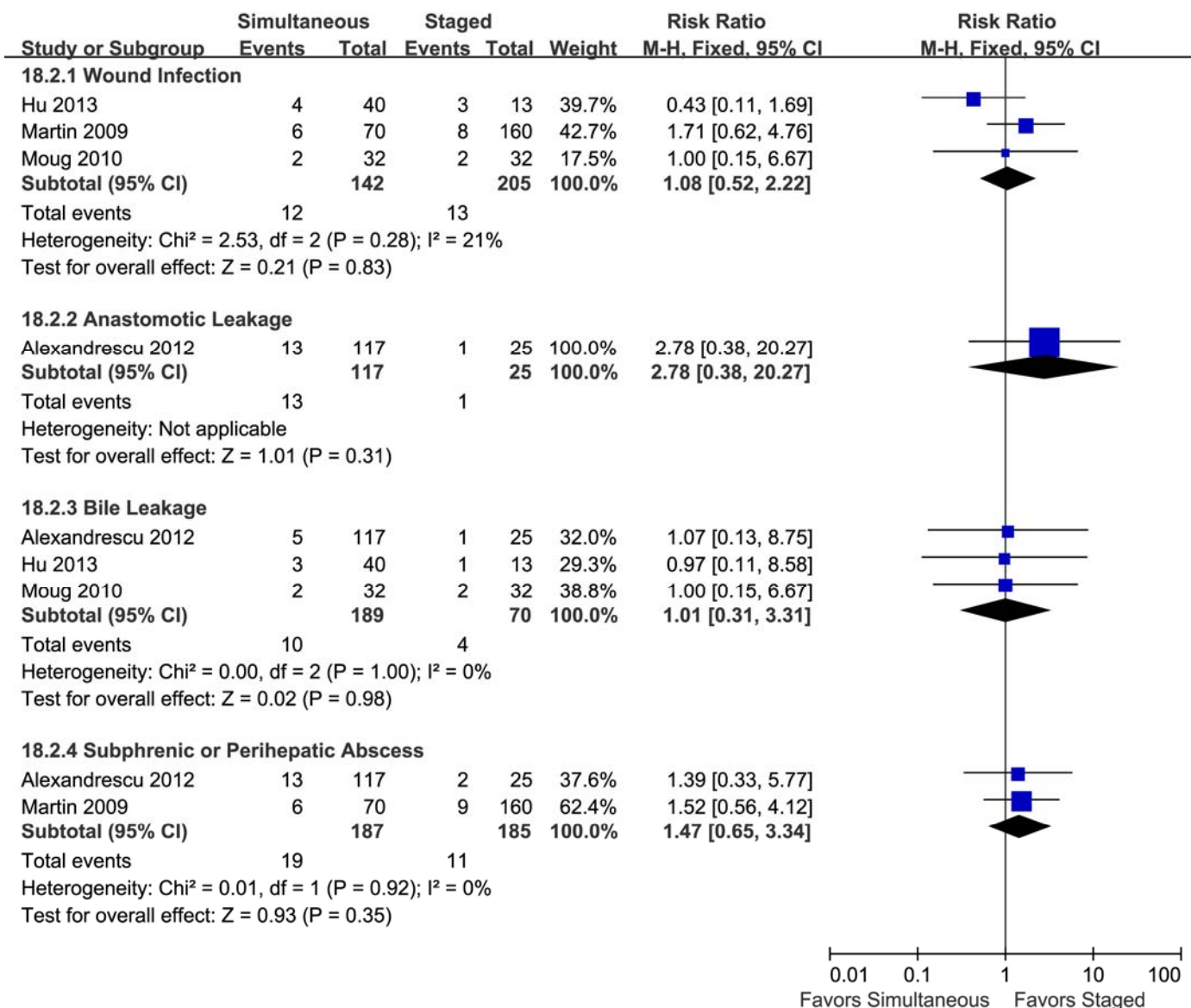
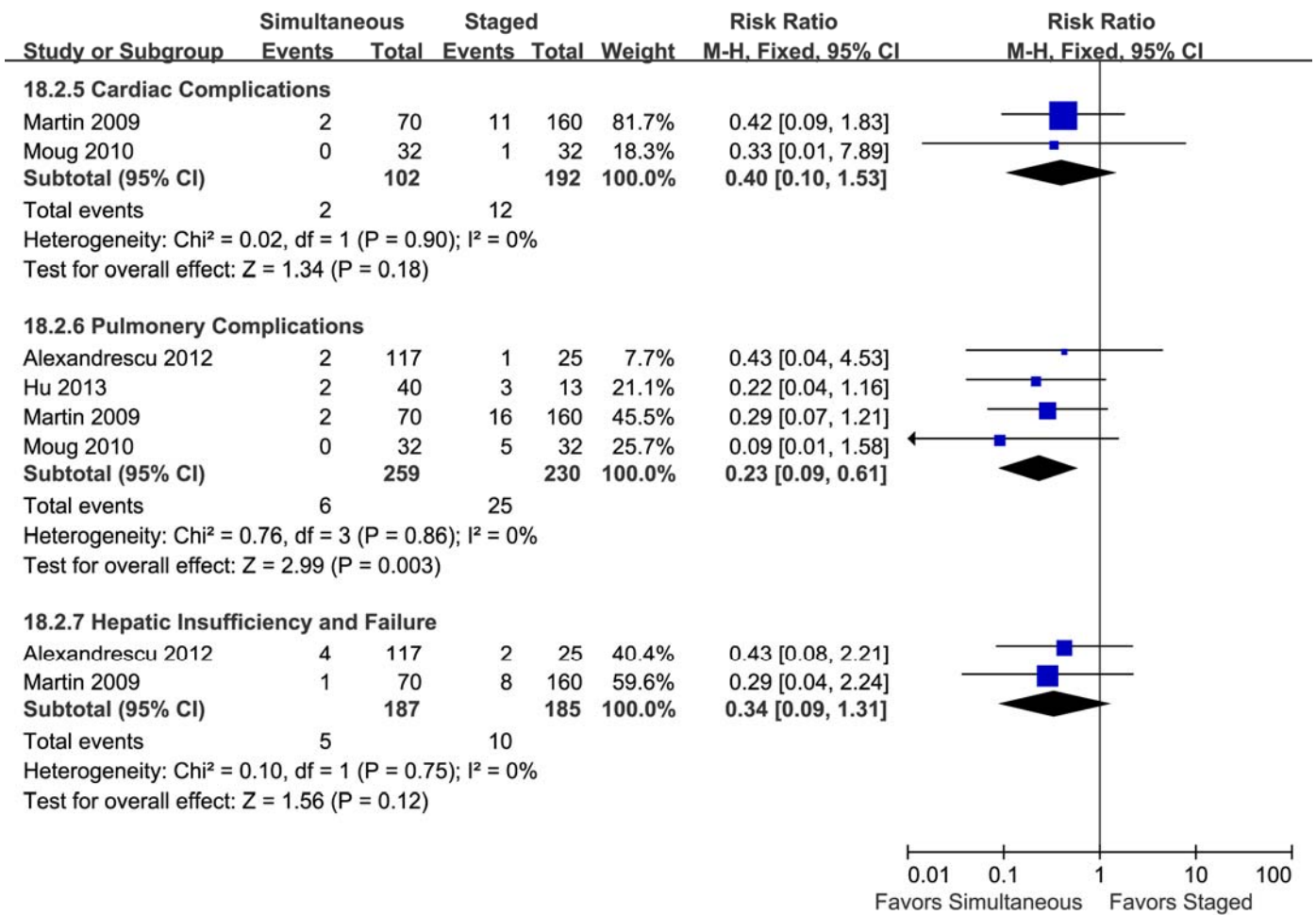


Figure S6

Corrected subtype analysis of postoperative morbidity





Forest plots of the corrected subtype analysis of postoperative morbidity.

M-H: Mantel-Haenszel method

Favours Simultaneous: Simultaneous group had lower postoperative morbidity.

Favours Staged: Staged group had lower postoperative morbidity.

All results were corrected according to baseline analyses.

Pooled result showed significant difference between simultaneous and staged groups only in pulmonary complications. No other significant difference was observed.