

Electronic Supplementary Material (ESM)

Supplemental movie captions

Movie 1: Live *P. maniculatus* sperm aggregates imaged at 400X using phase contrast light microscopy.

Movie 2: A typical solution obtained from a numerical integration of equations (1) in the main text. The cells link together to form aggregates of various sizes and geometry. Dense aggregates have radial symmetry and this reduces their motility as the cells are forced to swim against each other.

Supplemental figure

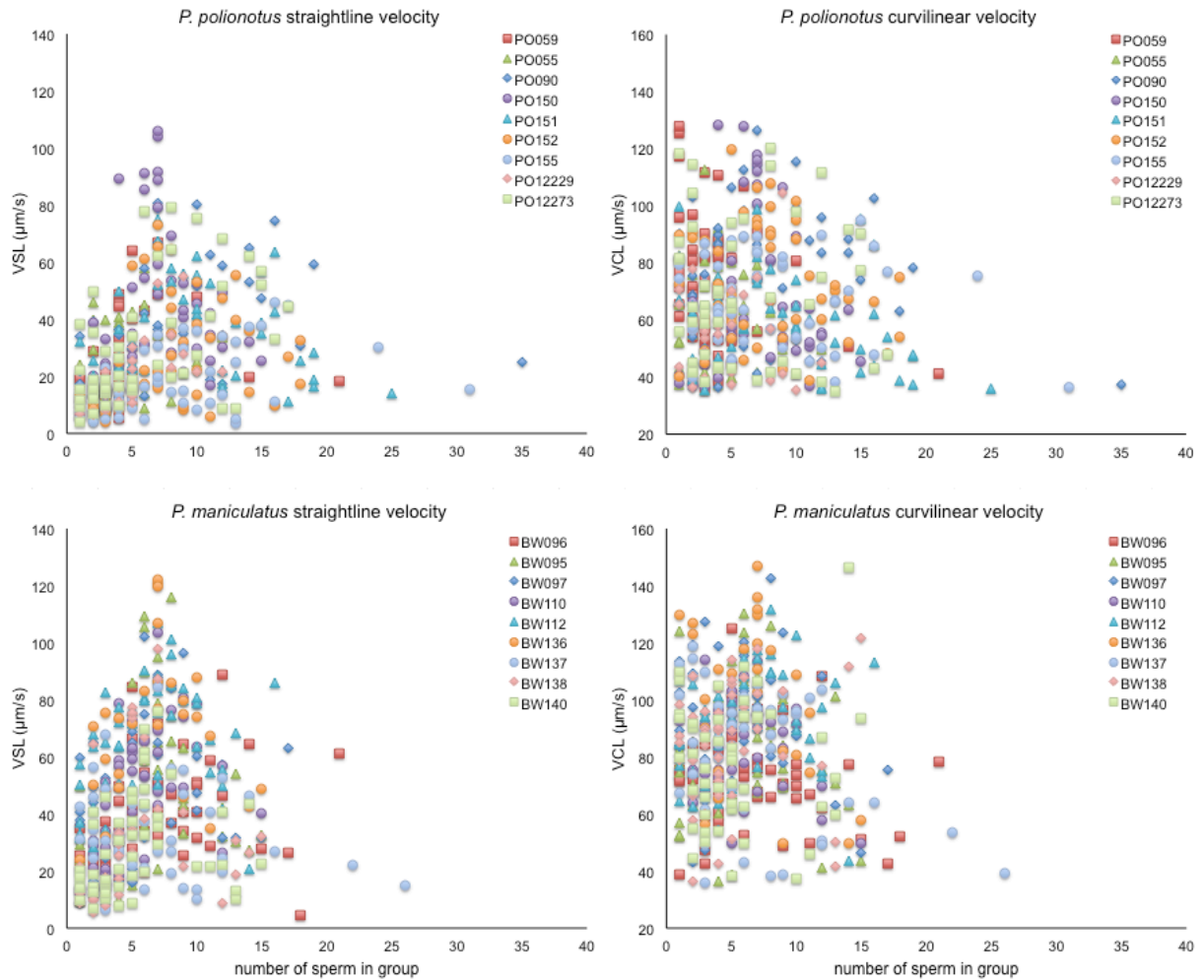


Figure S1: Straightline velocity (VSL) and curvilinear velocity (VCL) of all sperm aggregates measured, labelled by donor male and indicated by the colored points.