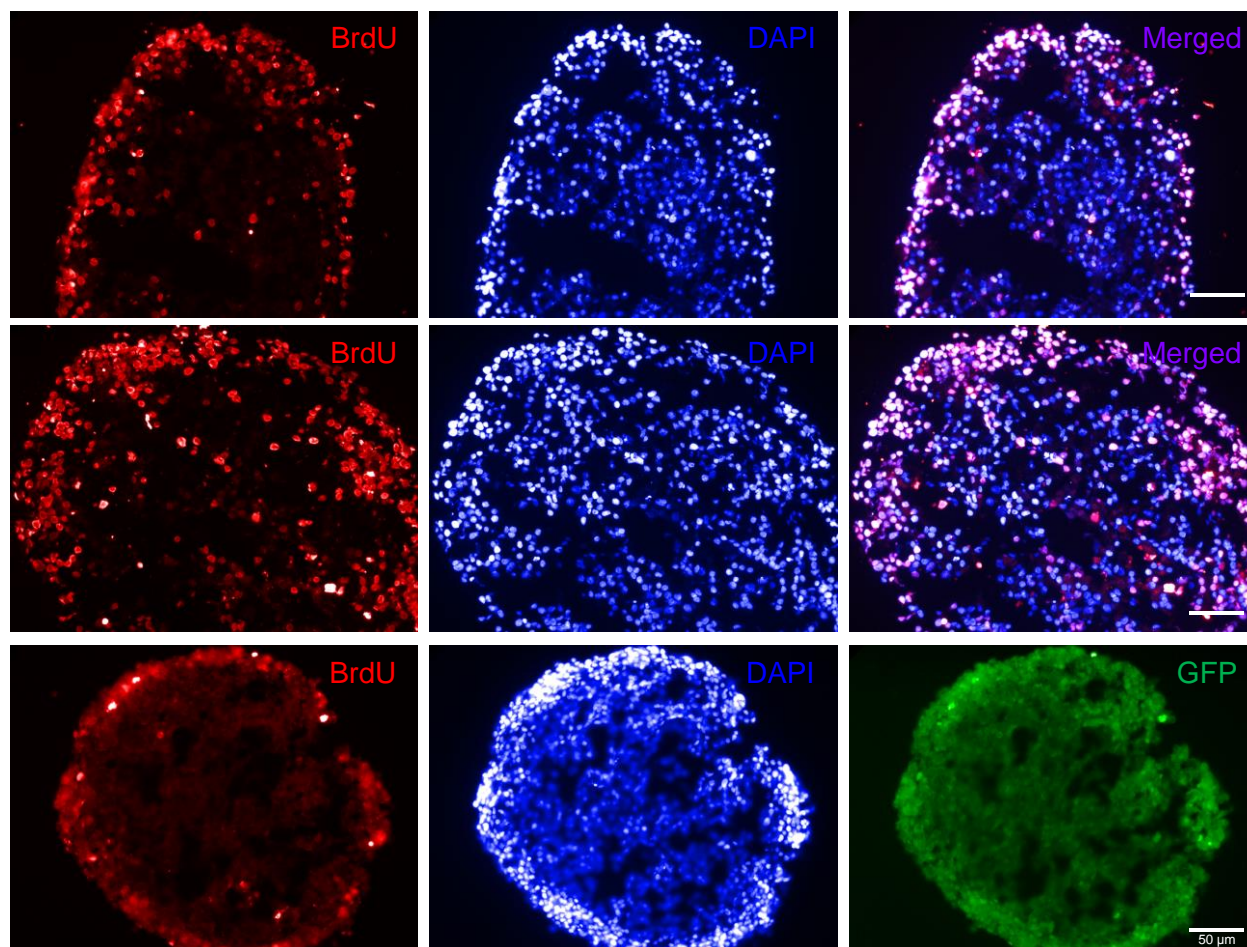


Supporting Information



Supplementary Figure 1. Representative images from cryosectioned NS-AHPCs immunostained for BrdU incorporation. Red (Cy3), BrdU-immunoreactive cells; Blue, DAPI nuclear counter-stained cells; Purple, both colorized images for BrdU- and DAPI-positive cells merged; Green, GFP-expressing AHPCs. Scale bars, 50 μm .