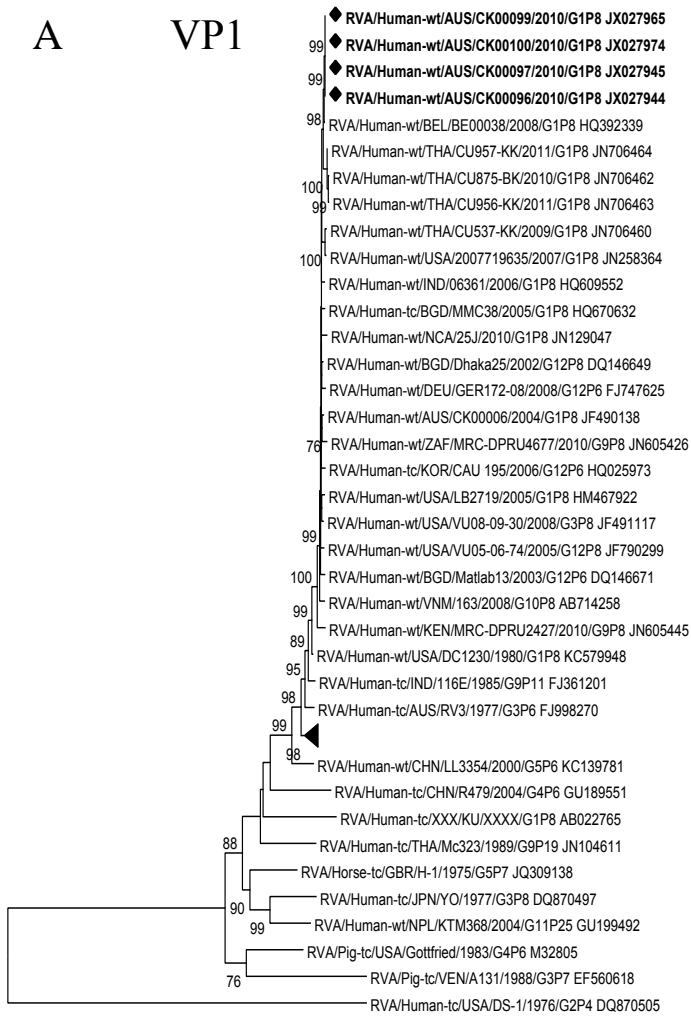
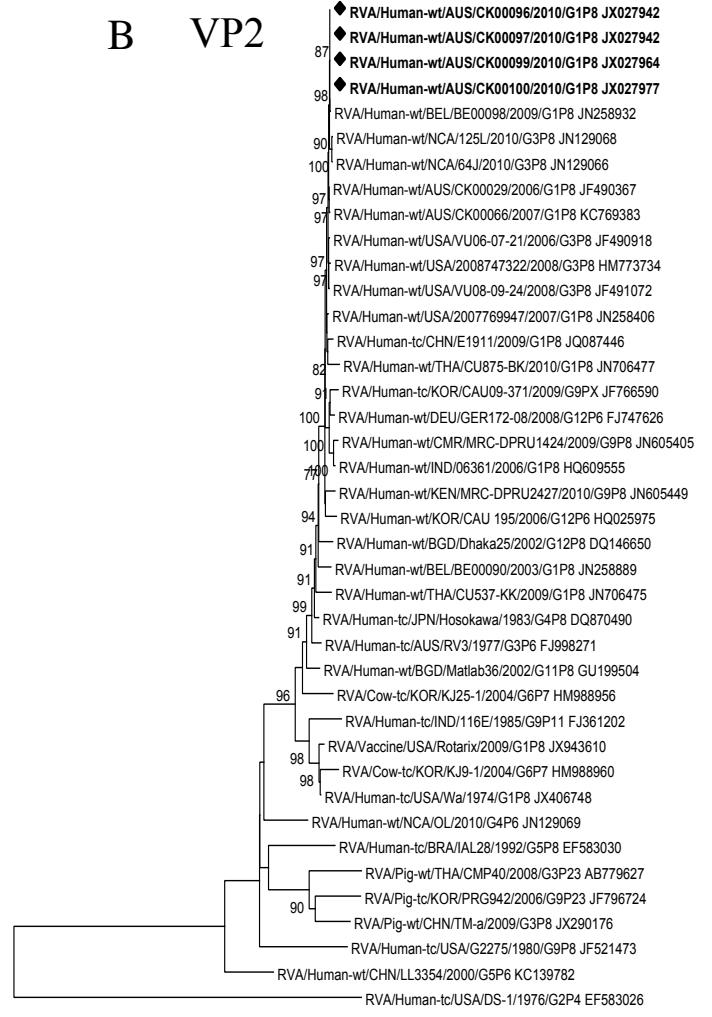


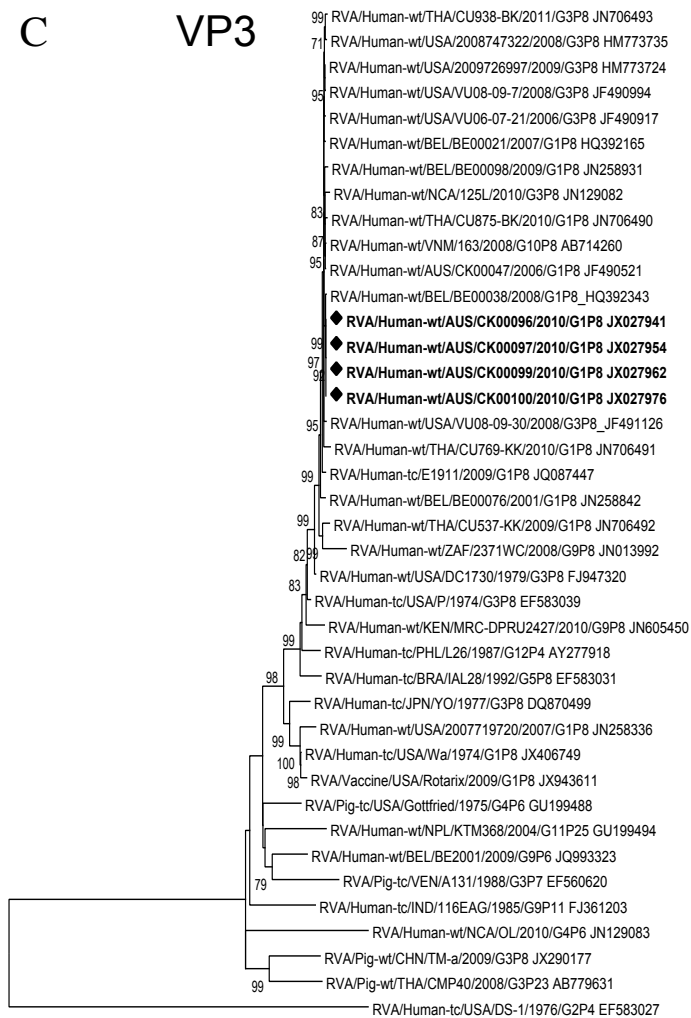
A VP1



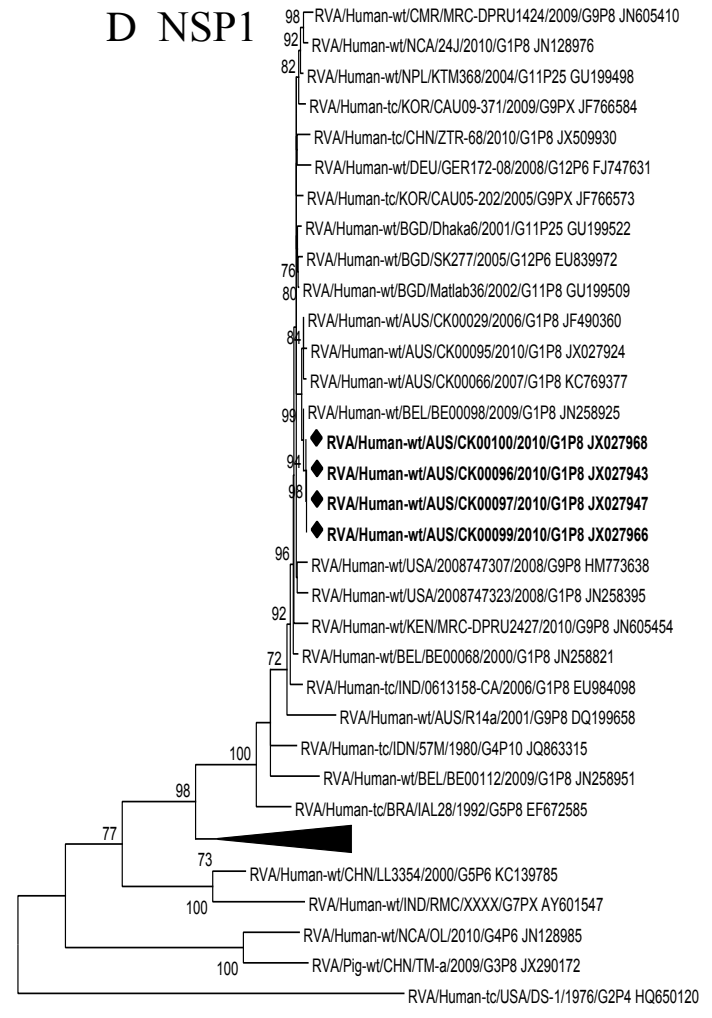
B VP2



C VP3



D NSP1



Supplementary Figure S2

Phylogenetic trees constructed from the nucleotide sequences of (A) VP1 (B) VP2, (C) VP3, (D) NSP1, genes of rotavirus strain CK00096, CK00097, CK00099 and CK00100 with other group A rotavirus strains. The position of strains CK00096, CK00097, CK00099 and CK00100 are indicated by a filled diamond symbol and are in bold. Bootstrap values $\geq 70\%$ are shown. Scale bar shows substitutions per site. The nomenclature of all the rotavirus strains indicates the rotavirus group, species isolated from, country of strain isolation, the common name, year of isolation, and the genotypes for genome segment 9 and 4 as proposed by the Rotavirus Classification Working Group.