

Figure S1. Overlaid 800 MHz ¹H NMR spectra of replicate polar extracts from day 7 potato wound periderm samples, color coded for Atlantic (red), Chipeta (green), Norkotah Russet (blue), and Yukon Gold (gold). Vertical expansions of the aromatic and multiple-bonded region between 6.0 and 8.0 ppm are shown in each inset.

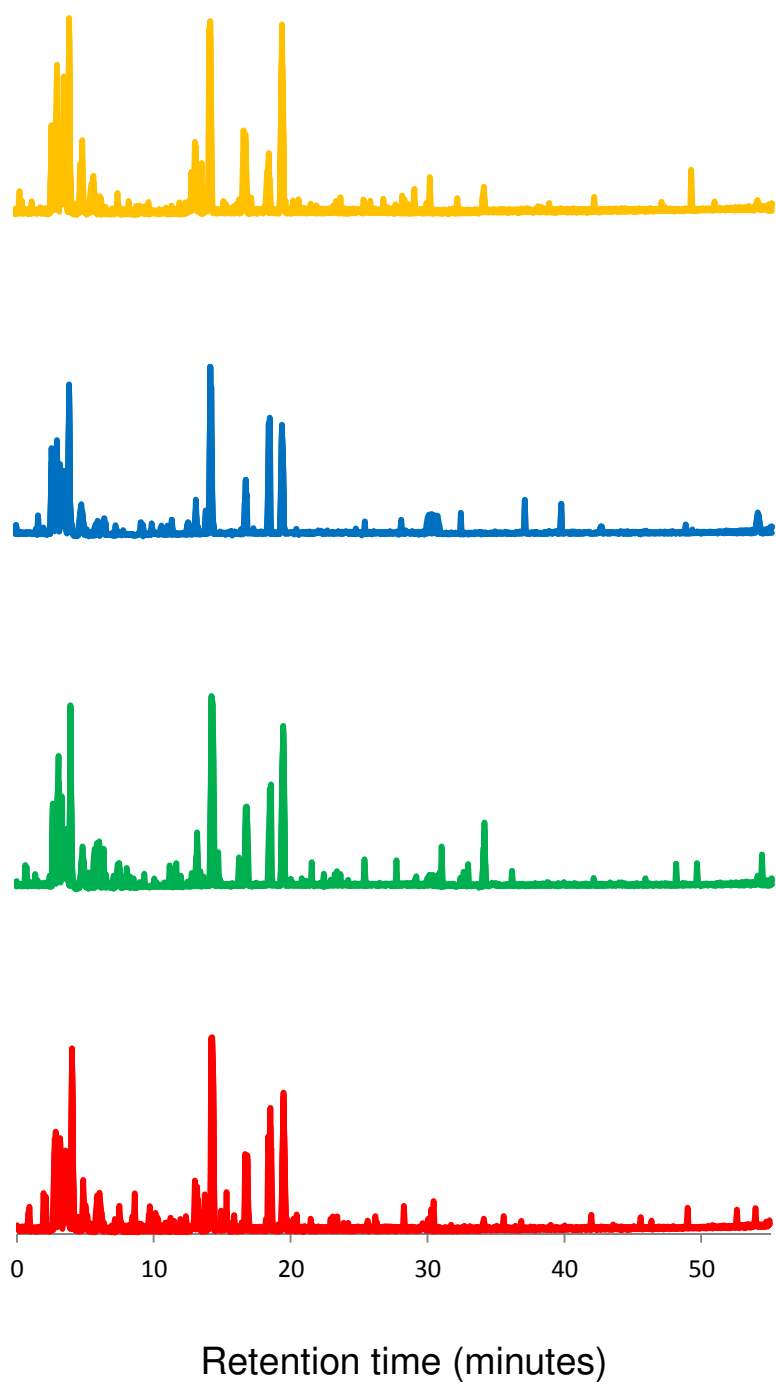


Figure S2. Overlaid LC-MS chromatograms of extracts for replicate polar extracts from day 7 potato wound periderm samples, color coded for Atlantic (red), Chipeta (green), Norkotah Russet (blue), and Yukon Gold (gold).