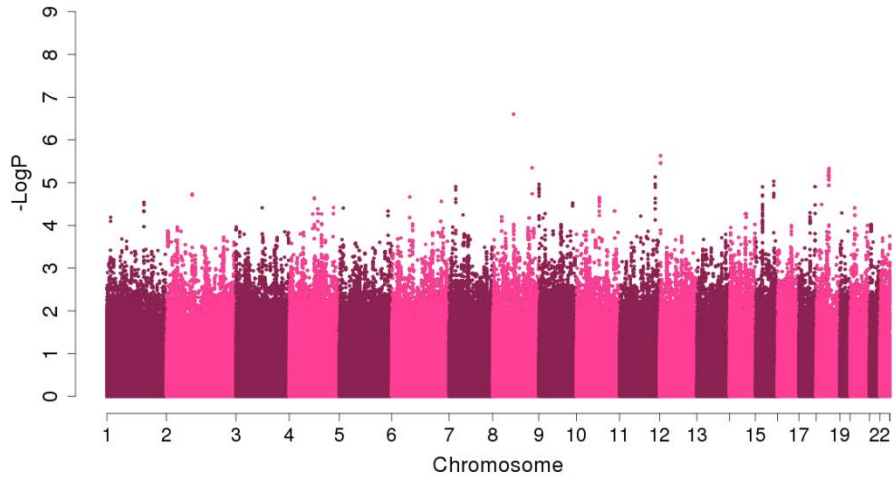
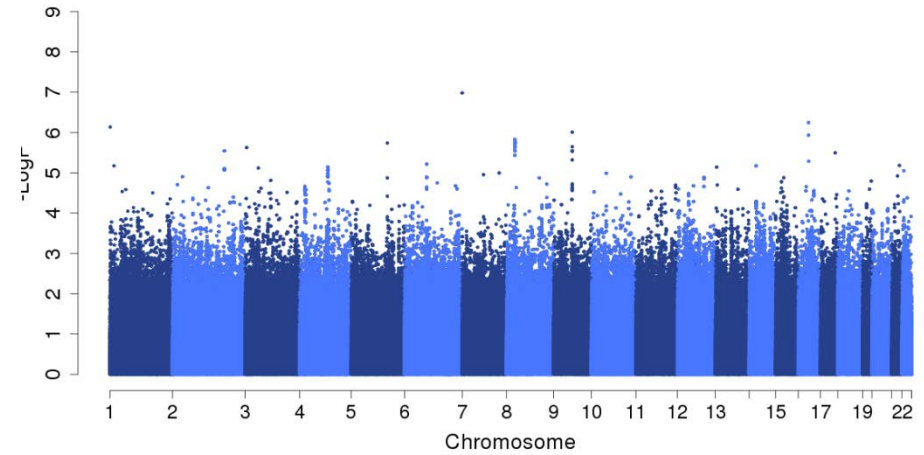


**Figure S1:** Manhattan plots for the European American, Latino, and African American/African Caribbean genome-wide association and meta-analysis results for allergic rhinitis

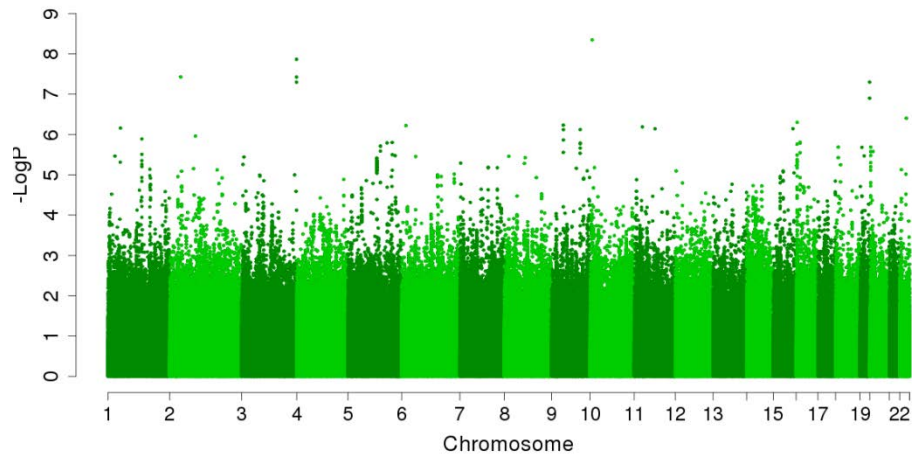
European American ( $\lambda_{GC} = 1.00$ )



African American/African Caribbean ( $\lambda_{GC} = 1.05$ )



Latino ( $\lambda_{GC} = 1.07$ )



Meta-analysis ( $\lambda_{GC} = 1.06$ )

