



Supplemental Material to:

**Min Hu, Yuhong Zou, Shashank Manohar Nambiar,
Joonyong Lee, Yan Yang, and Guoli Dai**

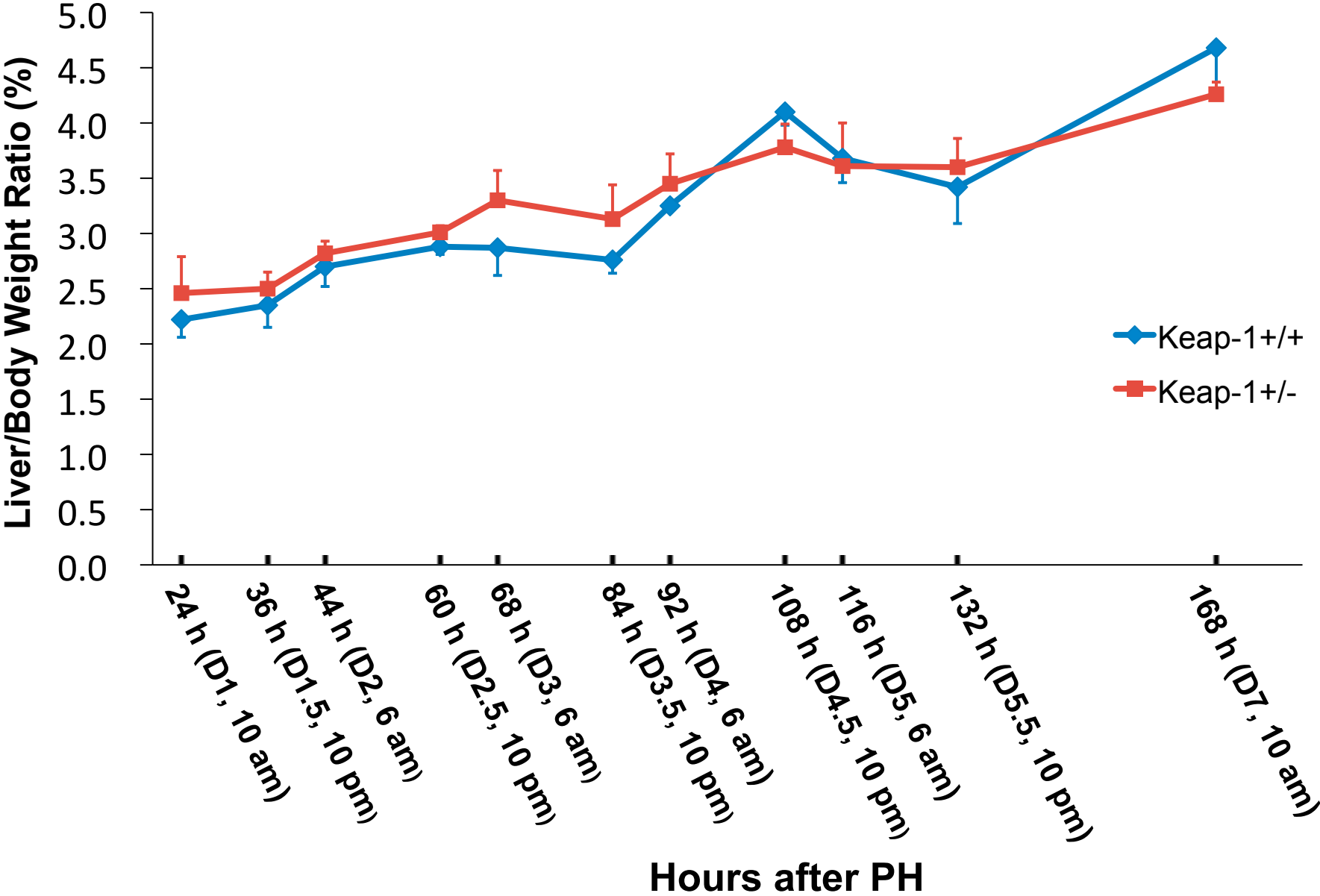
**Keap1 modulates the redox cycle and hepatocyte cell
cycle in regenerating liver**

Cell Cycle 2014; 13(15)

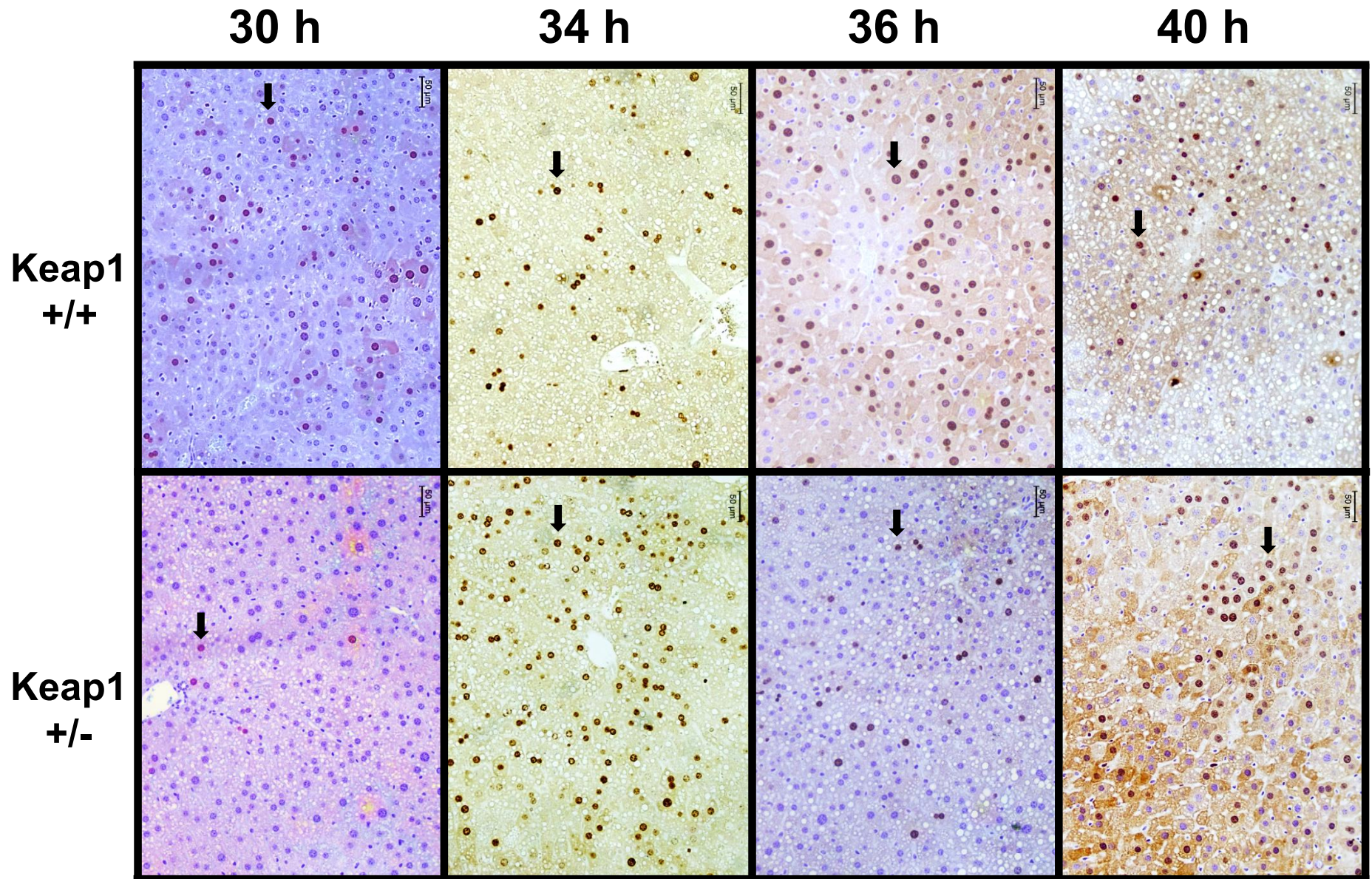
<http://dx.doi.org/10.4161/cc.29298>

<http://www.landesbioscience.com/journals/cc/article/29298>

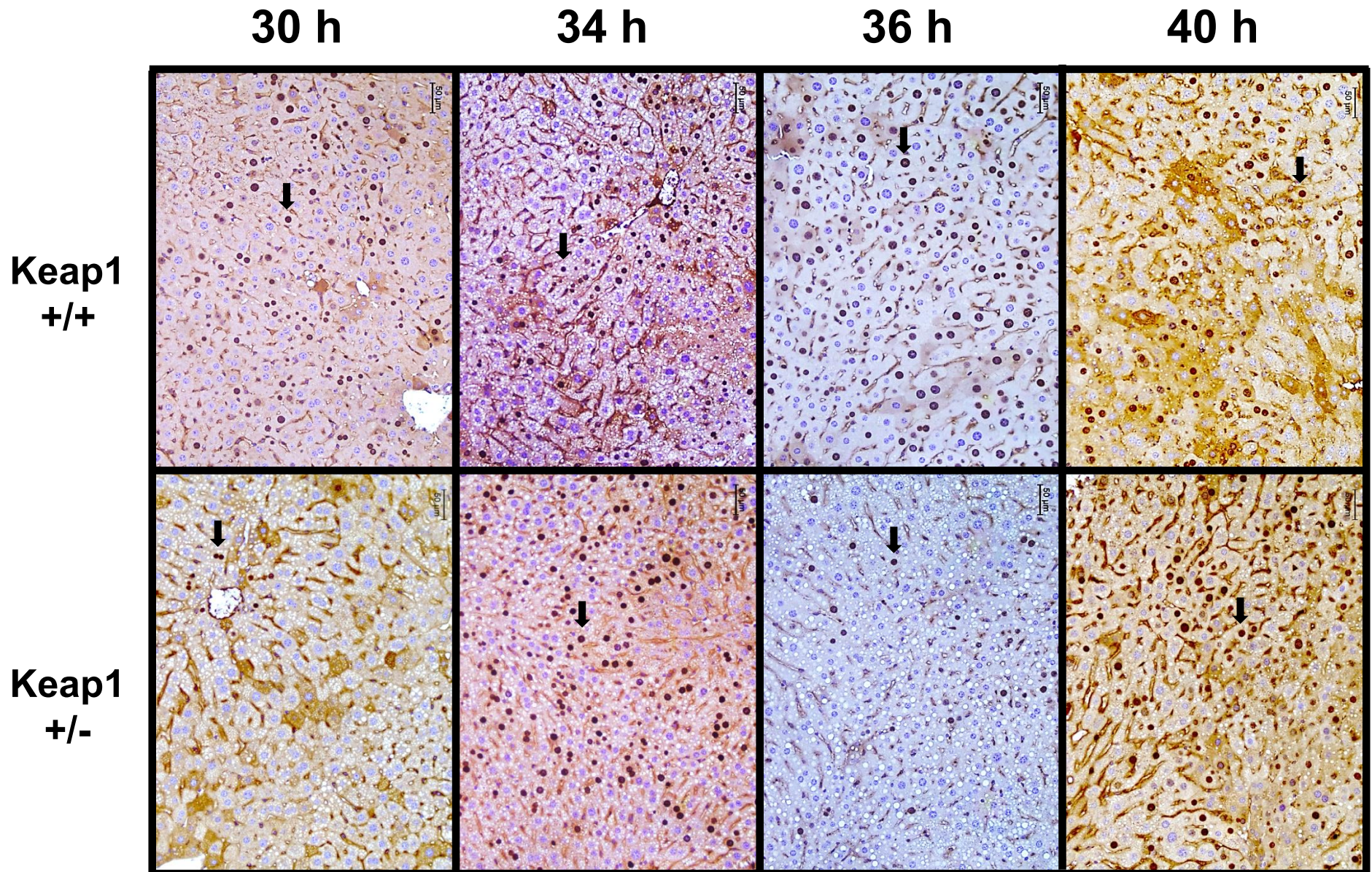
Supplement Figure 1



Supplement Figure 2

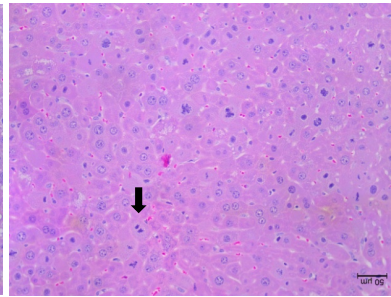
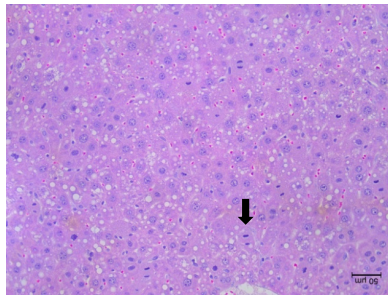


Supplement Figure 3

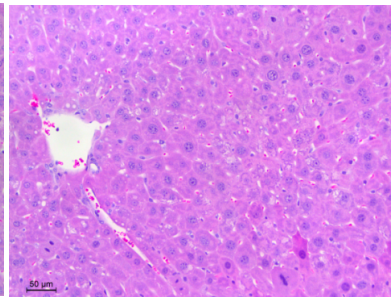
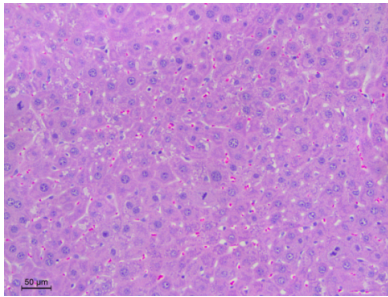


Suppl. Fig 4

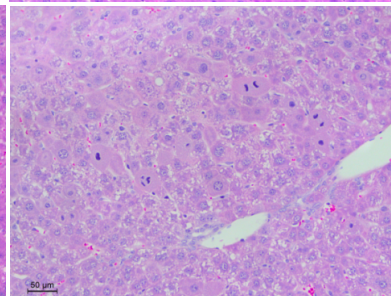
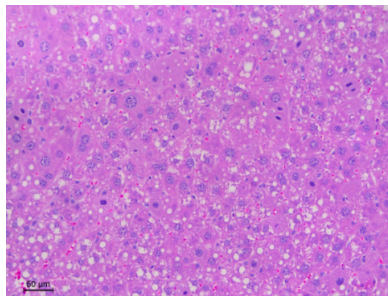
44 h
(D2, 6 am)



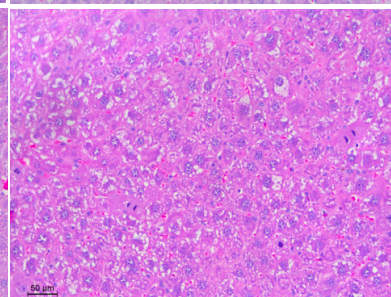
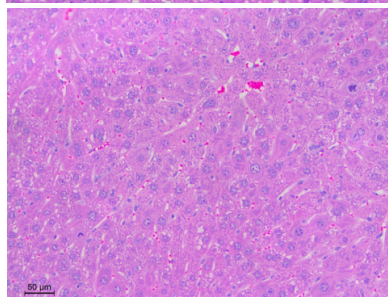
60 h
(D2.5, 10 am)



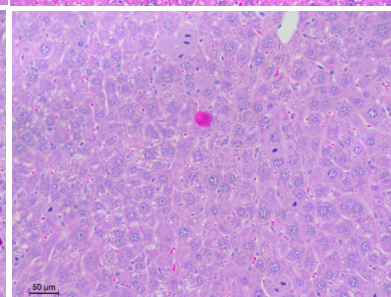
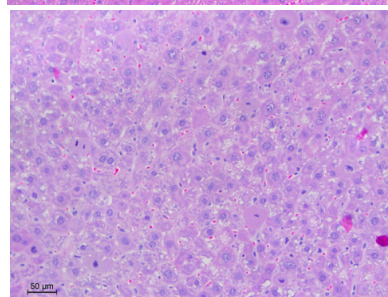
68 h
(D3, 6 am)



84 h
(D3.5, 10 pm)



92 h
(D4, 6 am)



Keap1+/+

Keap1+/-

Supplemental Materials

Supplement Figure Legends

Supplement Figure 1. Liver regrowth following partial hepatectomy (PH) in Keap1^{+/+} and Keap1^{+/-} mice. Mice were subjected to PH and sacrificed at the indicated time points. Liver-to-body weight ratios were used as a liver regrowth index. The results are presented as the mean liver-to-body weight ratios \pm SD (n = 3-8 mice per genotype per time point).

Supplement Figure 2. Representative liver sections subjected to Ki-67 immunostaining. Mice were sacrificed at the indicated time points following partial hepatectomy. Ki-67 immunostaining was performed with liver sections. Ki67-positive hepatocyte nuclei were stained dark brown. Representative Ki67-positive hepatocyte nuclei are indicated by arrows.

Supplement Figure 3. Representative liver sections subjected to BrdU immunostaining. Mice were sacrificed at the indicated time points following partial hepatectomy. One hour prior to sacrifice, BrdU was injected into the mice (100 mg/kg, i.p.). Liver sections were subjected to BrdU immunostaining. BrdU-positive hepatocyte nuclei were stained dark brown. Representative BrdU-positive hepatocyte nuclei are indicated by arrows.

Supplement Figure 4. Representative liver sections showing mitotic figures. Mice were sacrificed at the indicated time points following partial hepatectomy. Liver sections were subjected to hematoxylin and eosin staining. Representative mitotic figures are indicated by arrows.