



## **Supplemental Material to:**

**Hyewon Park, Timothy K Turkalo, Kayla Nelson,  
Stephan Sai Folmsbee, Caroline Robb, Brittany Belford,  
and Mizuki Azuma**

**Ewing sarcoma EWS protein regulates midzone formation  
by recruiting Aurora B kinase to the midzone**

**Cell Cycle 2014; 13(15)**

**<http://dx.doi.org/10.4161/cc.29337>**

**<http://www.landesbioscience.com/journals/cc/article/29337>**

Figure S1

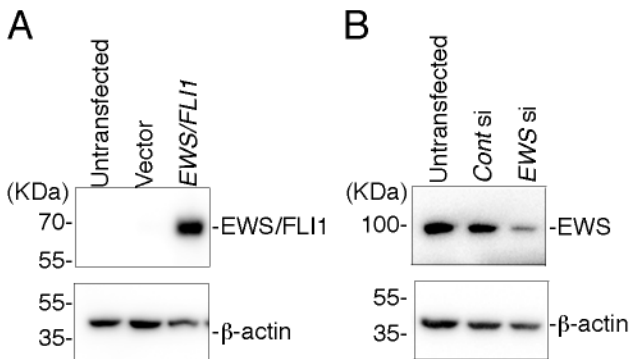


Figure S1. **A.** Western blot of HeLa cell lysates from empty vector-transfected and pSG5-2xFLAG-*EWS/FLI1*-transfected cells probed with anti-FLAG antibody and with anti- $\beta$ -actin antibody control. **B.** Western blots of HeLa cell lysates from control siRNA (scrambled siRNA)-transfected and *EWS* siRNA-transfected HeLa cells probed with anti-*EWS* antibody to verify the reduction of *EWS* proteins, along with anti- $\beta$ -actin antibody control. *Cont si*: control siRNA, and *EWS si*: *EWS* siRNA-transfected HeLa cells.

Figure S2

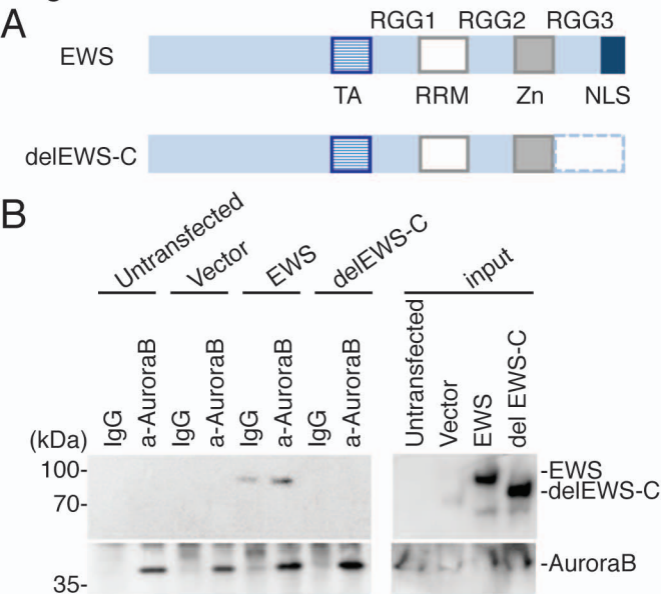


Figure S2. EWS but not the *delEWS-C* mutant interacts with Aurora B, and transfection with *EWS* but not the *delEWS-C* mutant rescues the high incidence of the aberrant localization of Aurora B in A673 cells. **A**. Schematic drawing of EWS and *delEWS-C* mutant proteins. **B**. immunoprecipitation of lysates from untransfected, empty vector, *pSG5-2xFLAG-EWS*- and *pSG5-2xFLAG-delEWS-C*-transfected HeLa cells using IgG and anti-Aurora B antibody. Top (left): Probing blots with anti-FLAG shows that EWS coimmunoprecipitates with Aurora B. Bottom (left): Probing blots with anti-Aurora B shows immunoprecipitates of endogenous Aurora B. Right panel: input sample (1/50) of cell lysates with untransfected, empty vector, *pSG5-2xFLAG-EWS*-, and *pSG5-2xFLAG-delEWS-C*-transfected HeLa cells visualized with anti-FLAG antibody (top) and anti-Aurora B antibody (bottom).

Figure S3

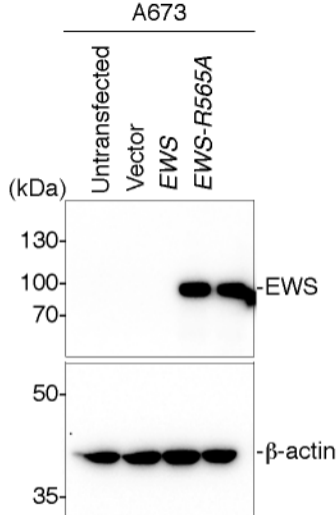


Figure S3. Western blot of A673 cell lysates from untransfected, empty vector-transfected, pSG5-2xFLAG-EWS- and pSG5-2xFLAG-EWS-R565A-transfected cells probed with anti-FLAG antibody and with anti- $\beta$ -actin antibody control.