

Prognostic value of CD133 and nestin in gliomas

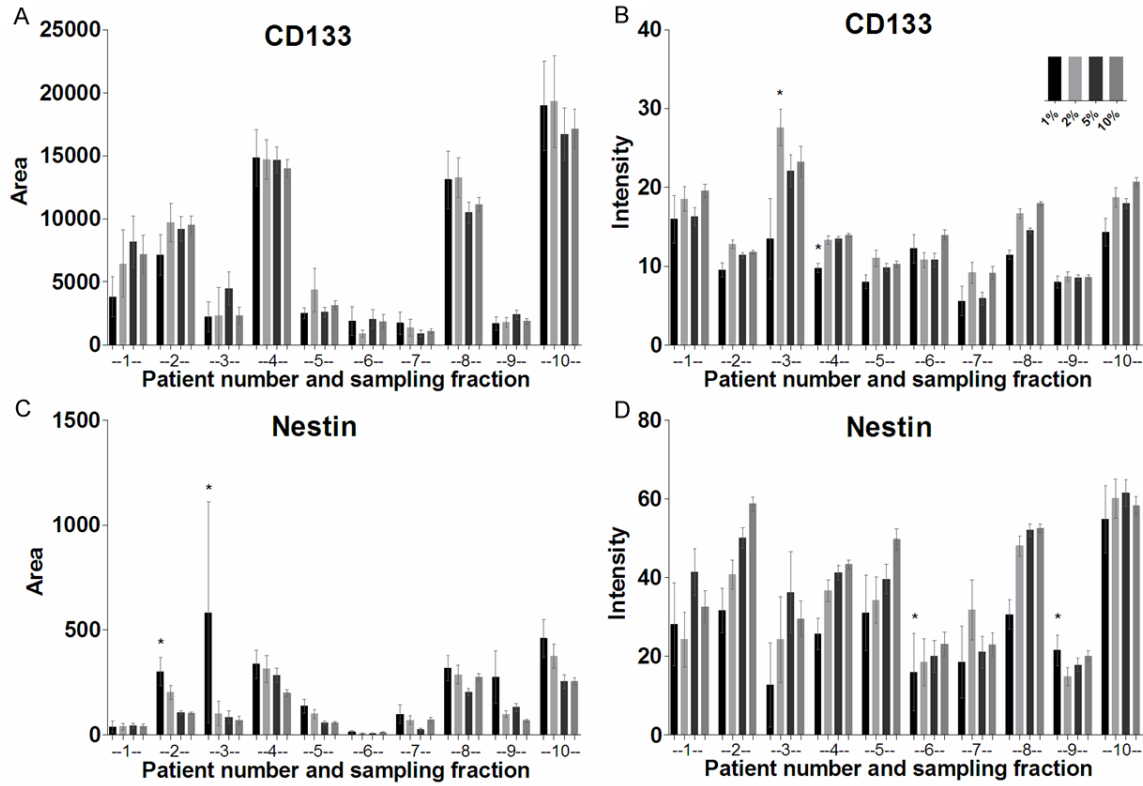


Figure S1. Sampling fraction measurements for ten different patients with glioblastoma are shown. For each patient area of CD133+ tissue (A), mean intensity of CD133+ tissue (B), area of nestin+ tissue (C), and mean intensity of nestin+ tissue (D) were measured when sampling in 1%, 2% , 5%, and 10% (insert B) of the tissue. Asterisks indicate patients in whom there was a significant difference between sampling in 1% of the tissue as compared to sampling in 2%, 5% or 10% of the tissue using ANOVA. Error bars indicate standard error of mean.