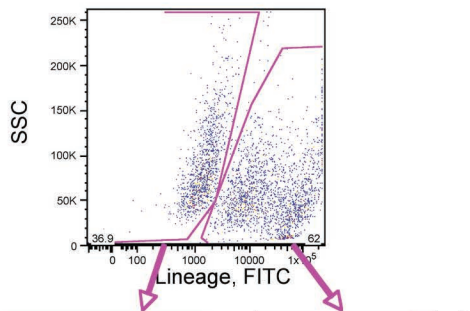
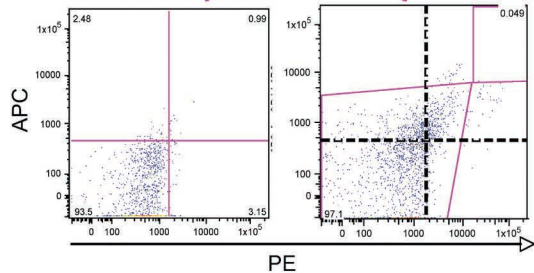
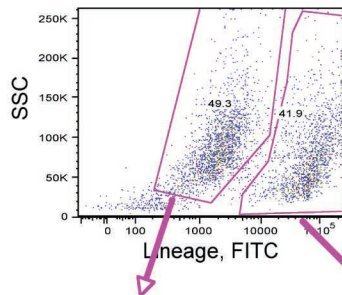


Xenograft, post-compensation, exposed only to FITC lineage antibodies

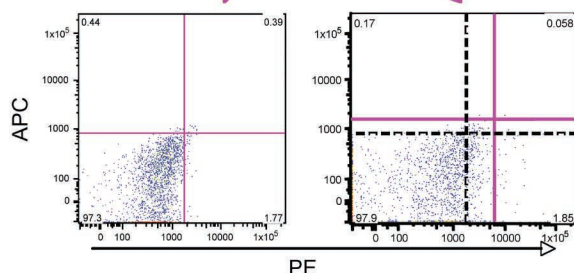


Pleural effusion, post-compensation, exposed only to FITC lineage antibodies



Lineage<sup>-</sup> PE & APC  
Autofluorescence

Lineage<sup>+</sup> PE & APC  
Autofluorescence



Lineage<sup>-</sup> PE & APC  
Autofluorescence

Lineage<sup>+</sup> PE & APC  
Autofluorescence

**Supplemental Figure 1.** Autofluorescence of live (7AAD negative) lineage positive and lineage negative cells. After compensation, autofluorescence in the PE and APC channels of lineage negative and positive cells from a representative xenograft (left panel) and pleural effusion (right panel). Cells were only exposed to 7AAD and lineage antibodies (FITC-conjugated).