

A

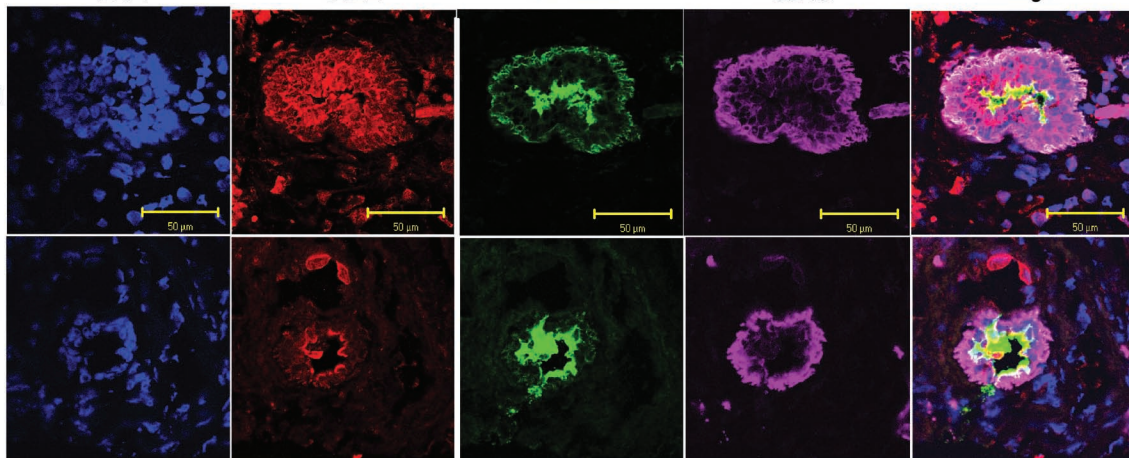
DAPI

CD44

CD133/2

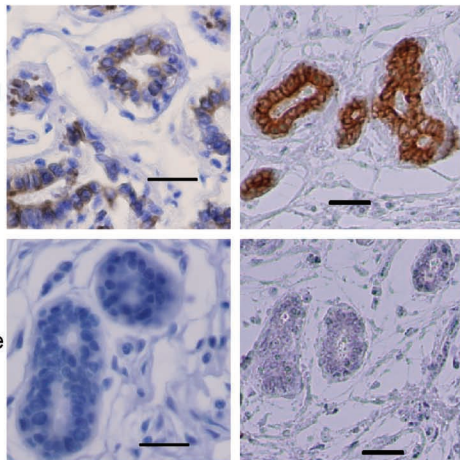
CD49f

Merge

Normal
Breast
TissueNormal
Breast
Tissue**B**

K5

K8

Normal
Breast
TissueNegative
Control

Supplemental Figure 8. Localization of CD44posCD49fposCD133/2pos cells and keratin staining in normal breast tissue. A, Confocal microscopy images of two representative normal breast samples illustrating localization of DNA (DAPI, blue), CD44 (red), CD133/2 (green) and CD49f (purple). In the merged images, CD44posCD49fposCD133/2pos cells appear white. Bars represent 50 microns. B, Expression of the epithelial keratins 5 and 8 in normal human breast tissue. Bars represent 50 microns.