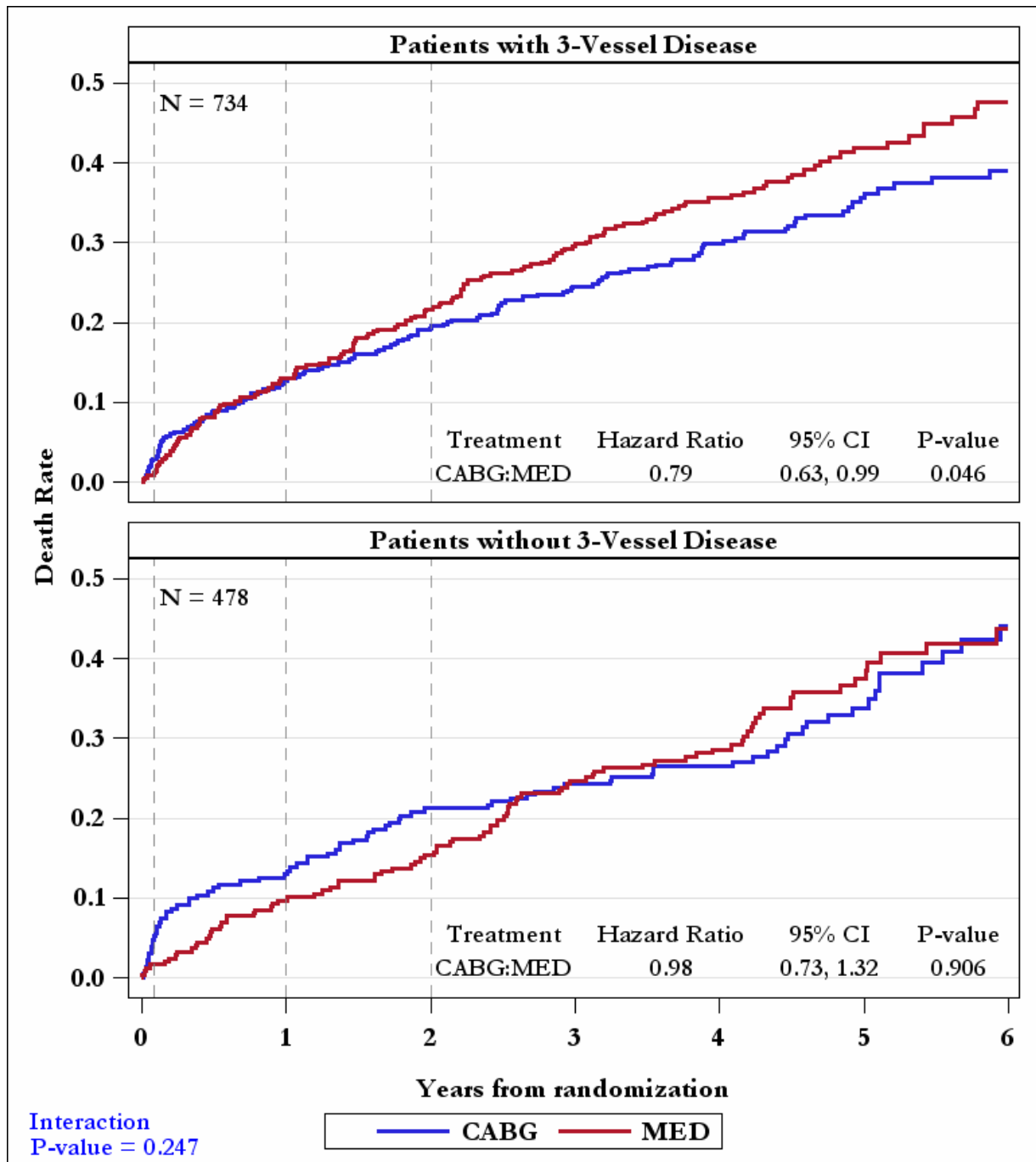
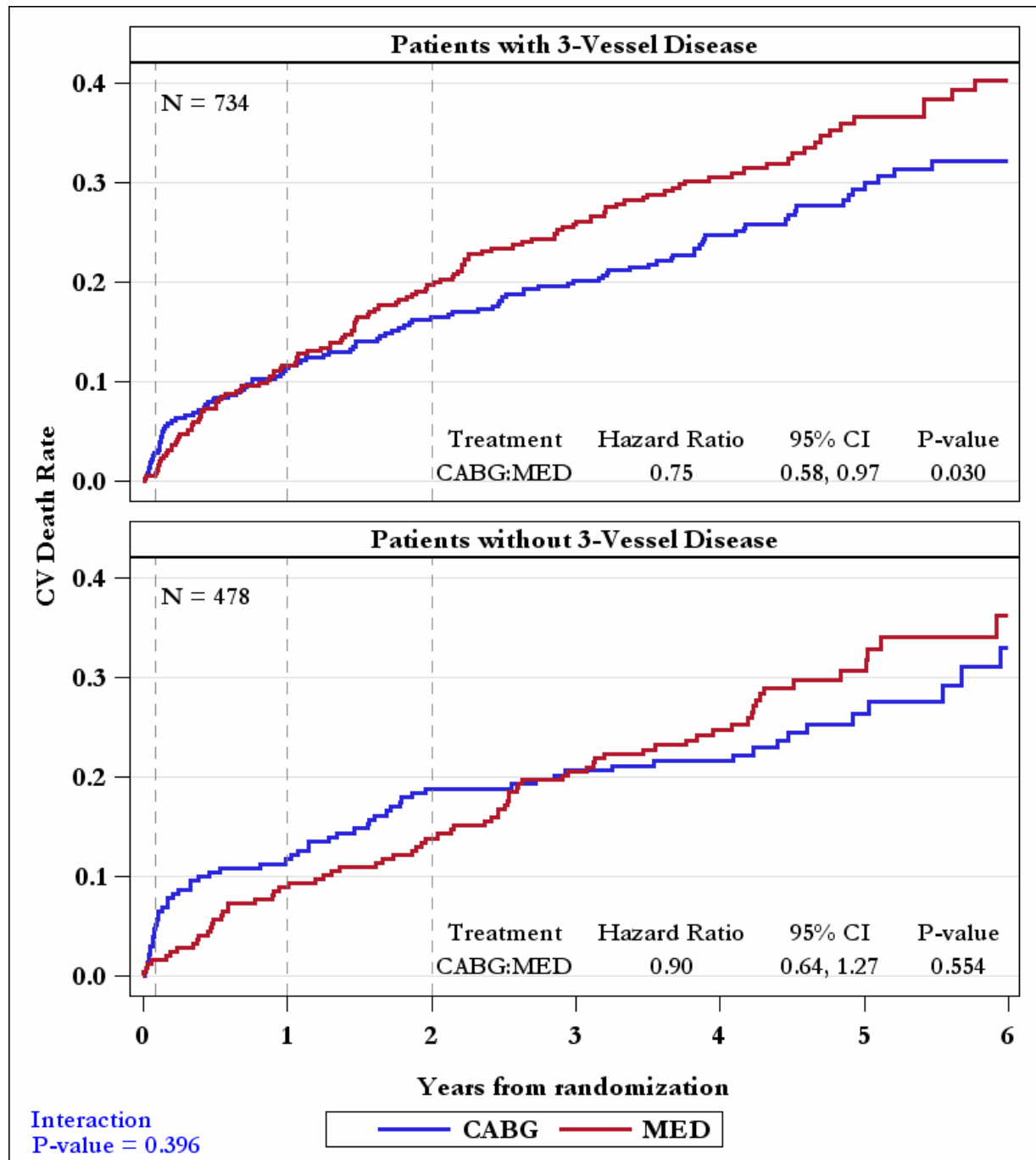


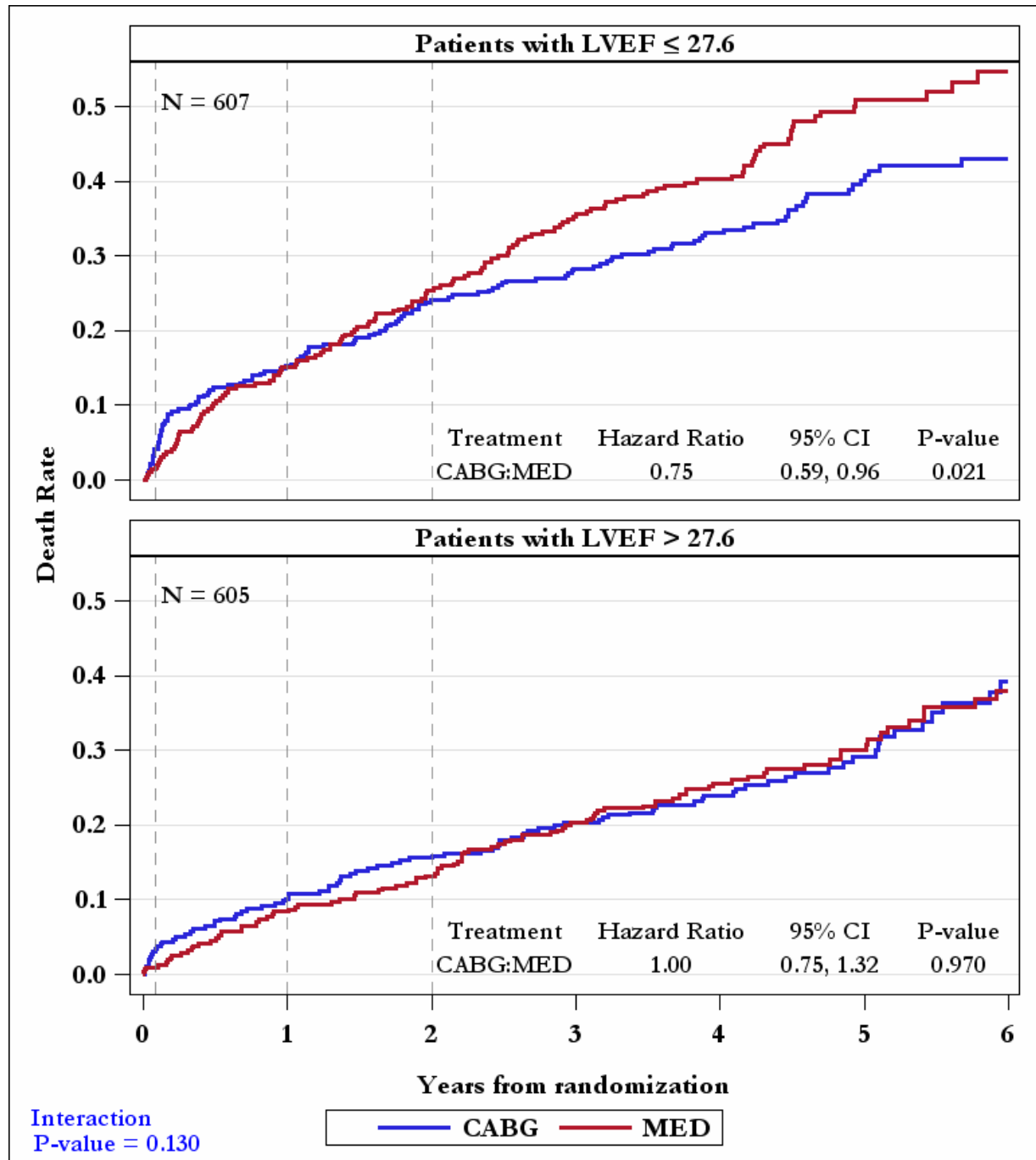
Supplemental Figure 1: Kaplan-Meier Estimates of All-cause Mortality Rates by Treatment—
Comparing Patients with or without 3-vessel Disease



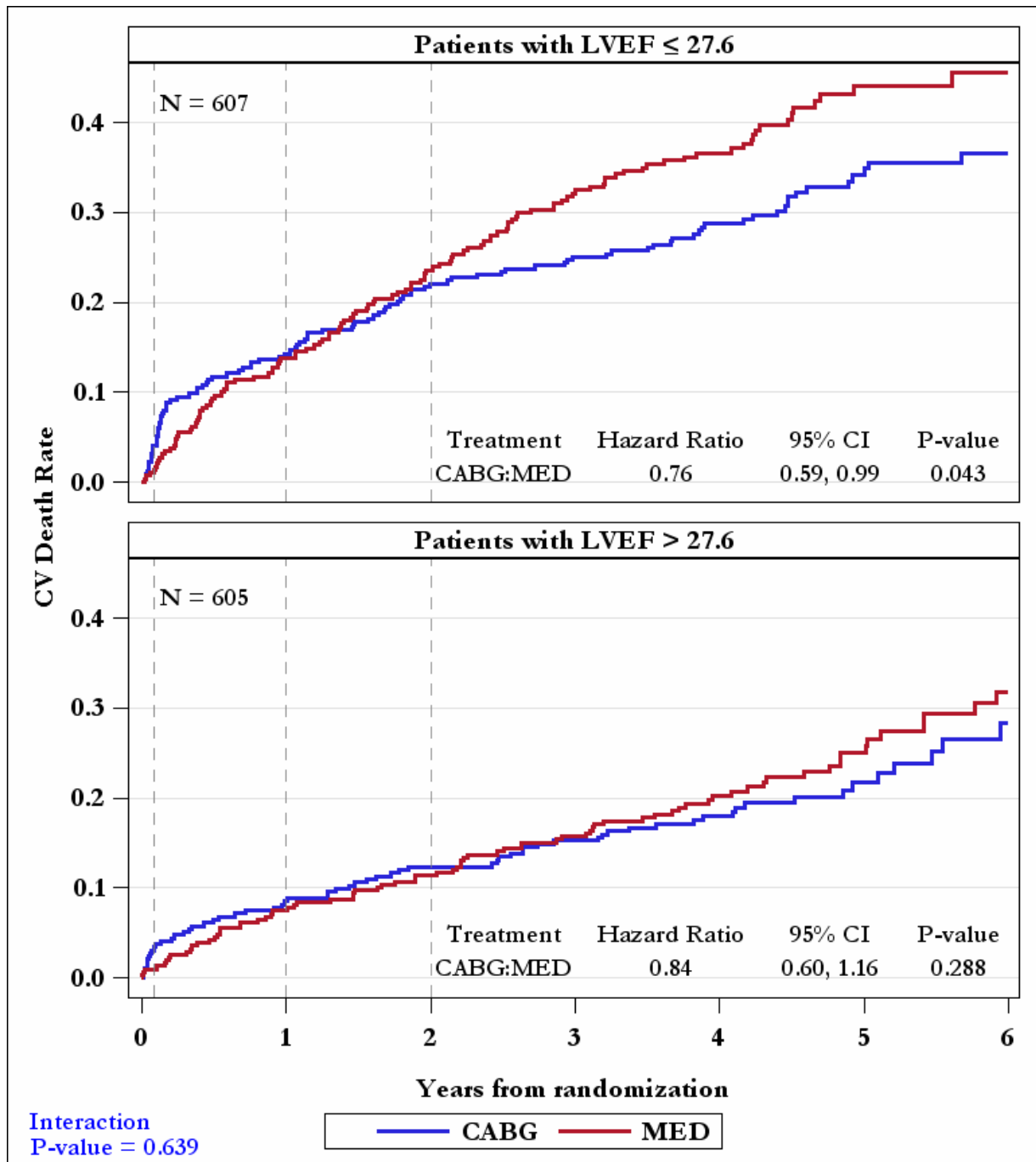
Supplemental Figure 2: Kaplan-Meier Estimates of Cardiovascular Mortality Rates by Treatment—Comparing Patients with or without 3-vessel Disease



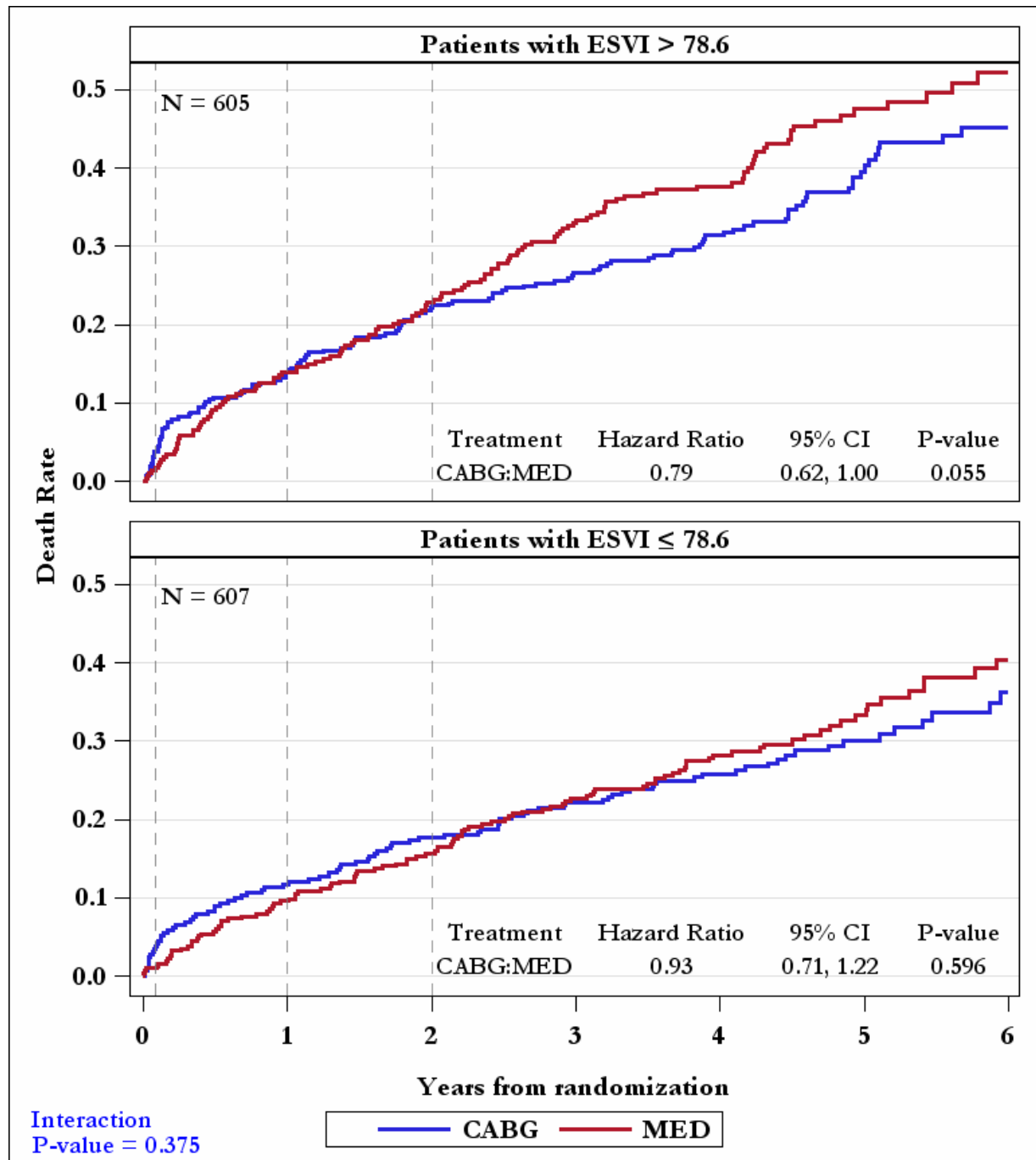
Supplemental Figure 3: Kaplan-Meier Estimates of All-cause Mortality Rates by Treatment—Comparing Patients with LVEF below or above Median (27.6%)



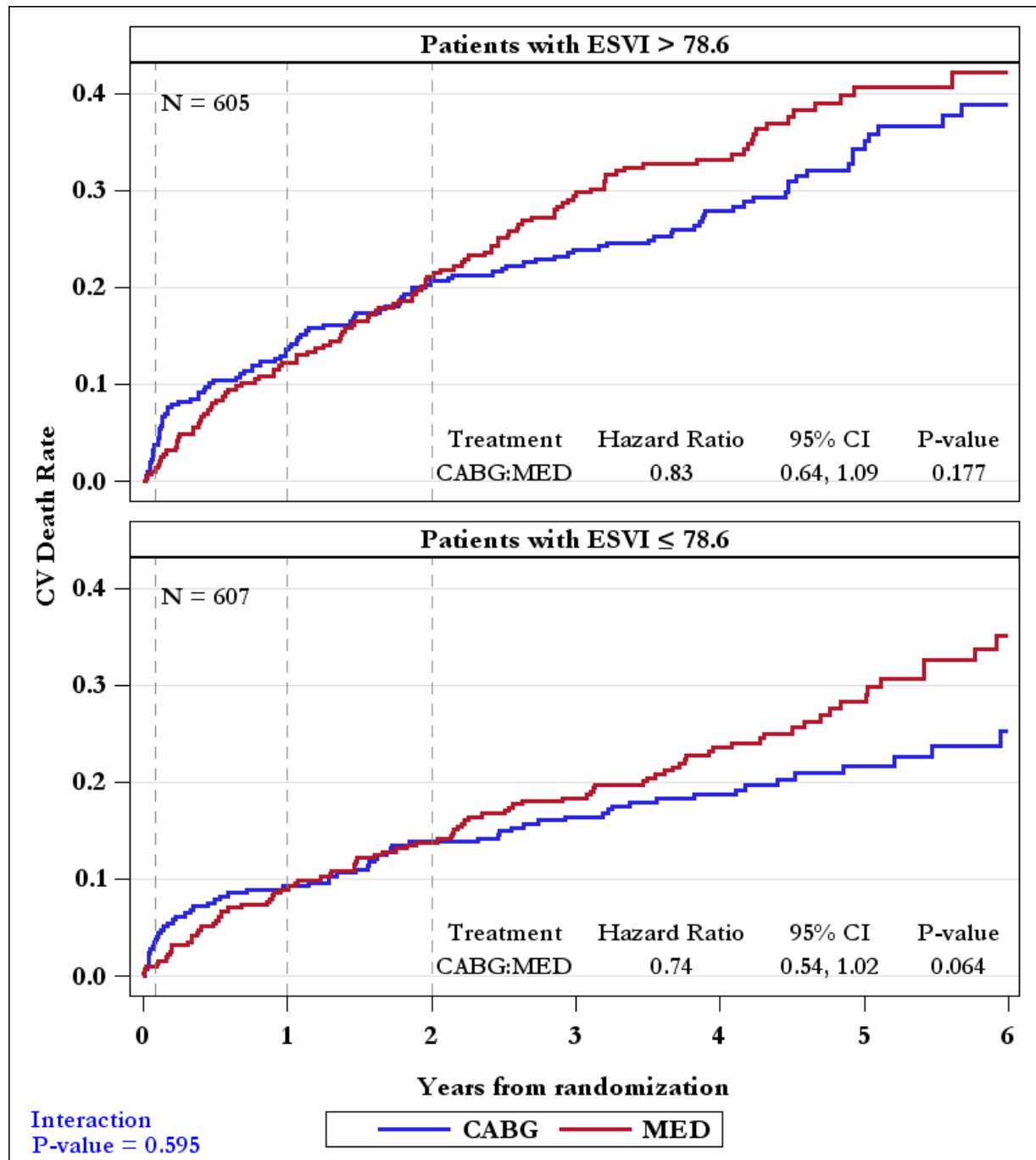
Supplemental Figure 4: Kaplan-Meier Estimates of Cardiovascular Mortality Rates by Treatment—Comparing Patients with LVEF below or above Median (27.6%)



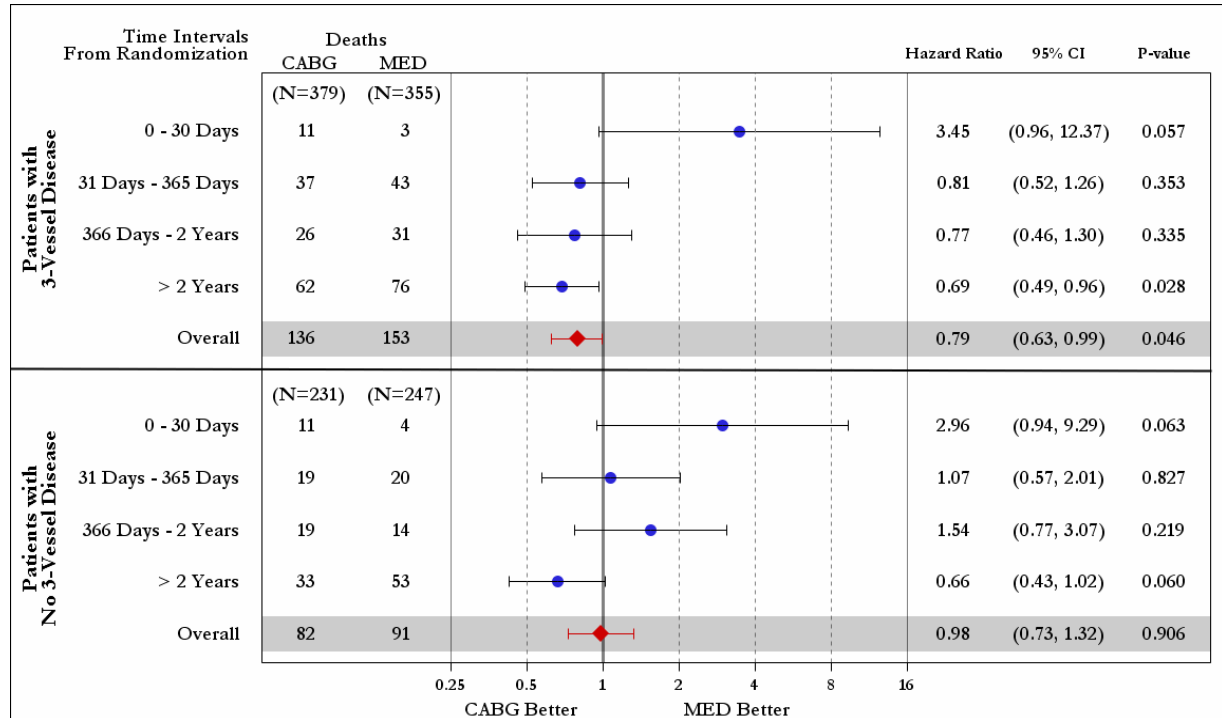
Supplemental Figure 5: Kaplan-Meier Estimates of All-cause Mortality Rates by Treatment—
Comparing Patients with ESVI below or above Median (78.6 mL/m²)



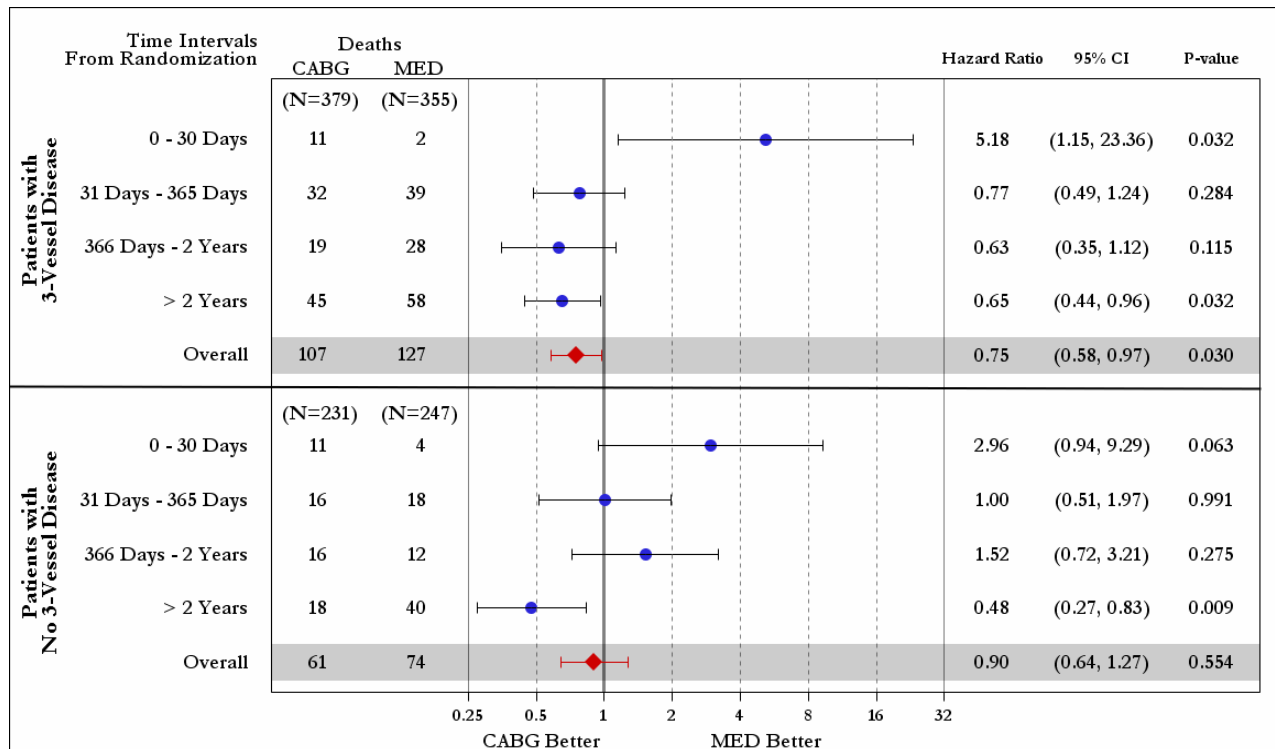
Supplemental Figure 6: Kaplan-Meier Estimates of Cardiovascular Mortality Rates by Treatment—Comparing Patients with ESVI below or above Median (78.6 mL/m²)



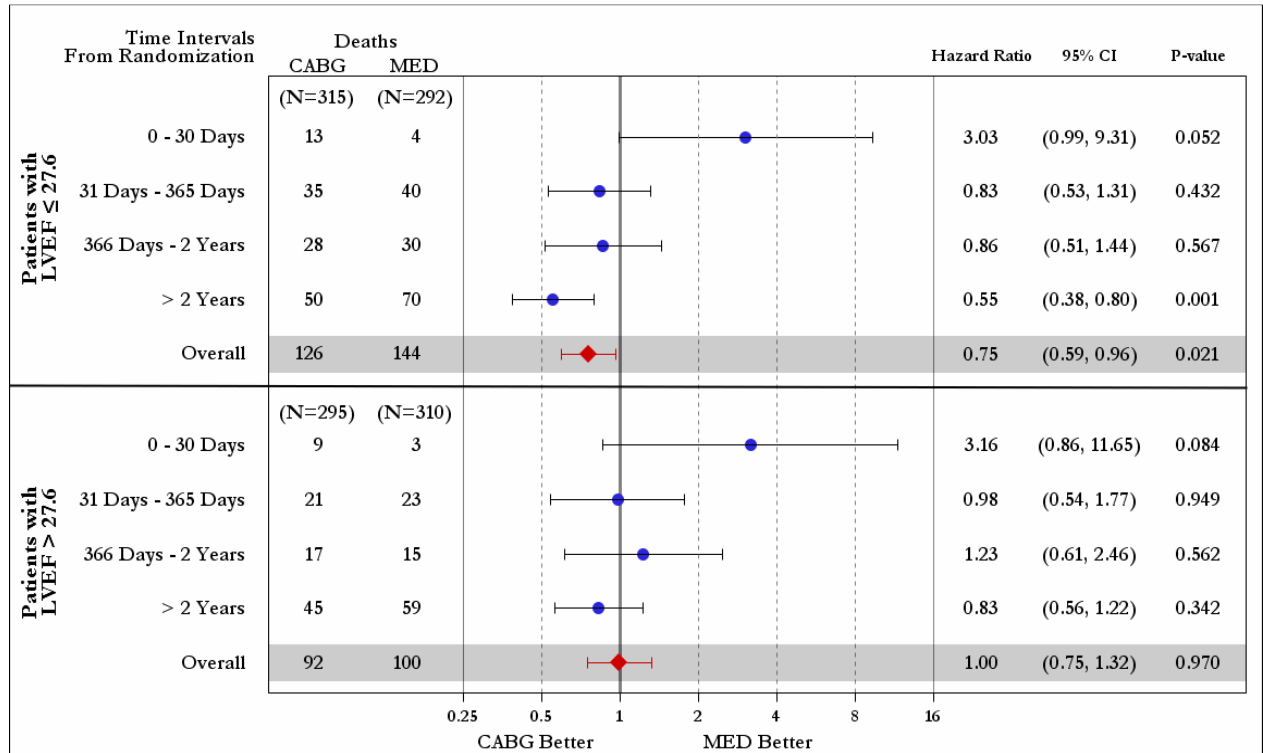
Supplemental Figure 7: Time-dependent Hazard Ratios of All-cause Mortality for CABG vs. MED As Randomized Comparing Patients with or without 3-vessel Disease



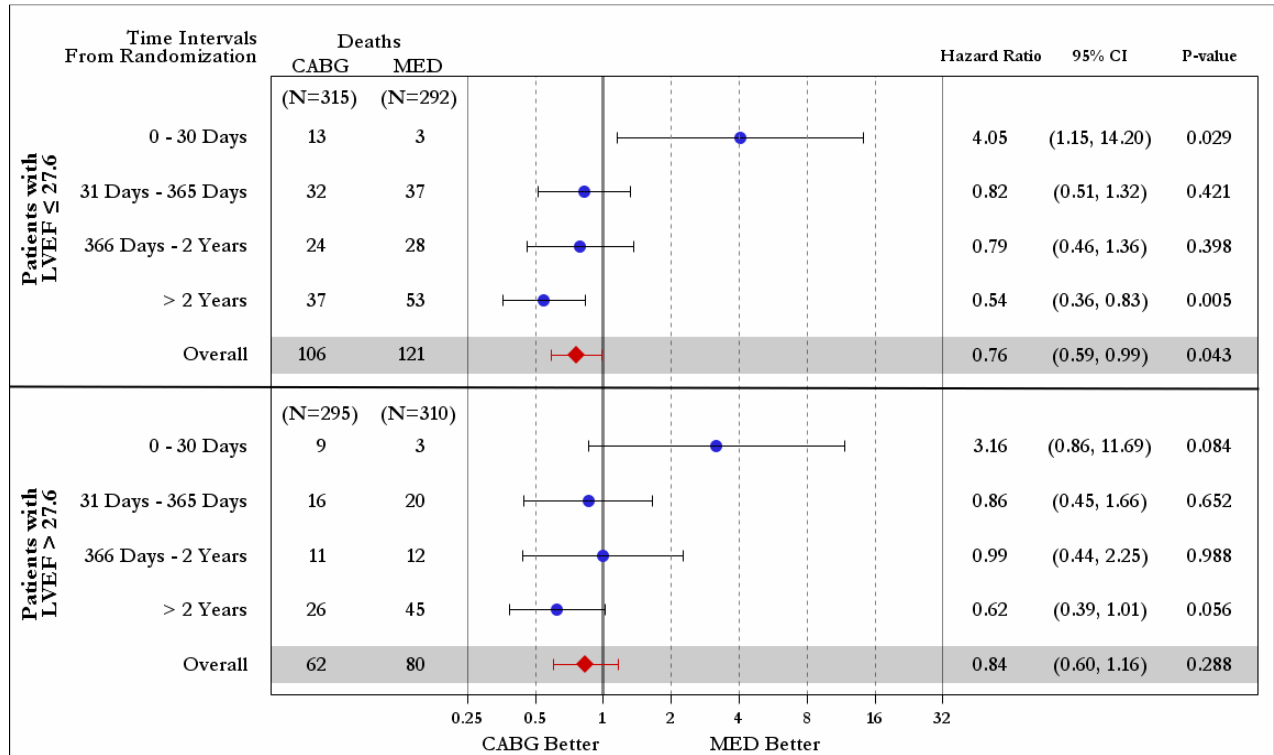
Supplemental Figure 8: Time-dependent Hazard Ratios of Cardiovascular Mortality for CABG vs. MED As Randomized Comparing Patients with or without 3-vessel Disease



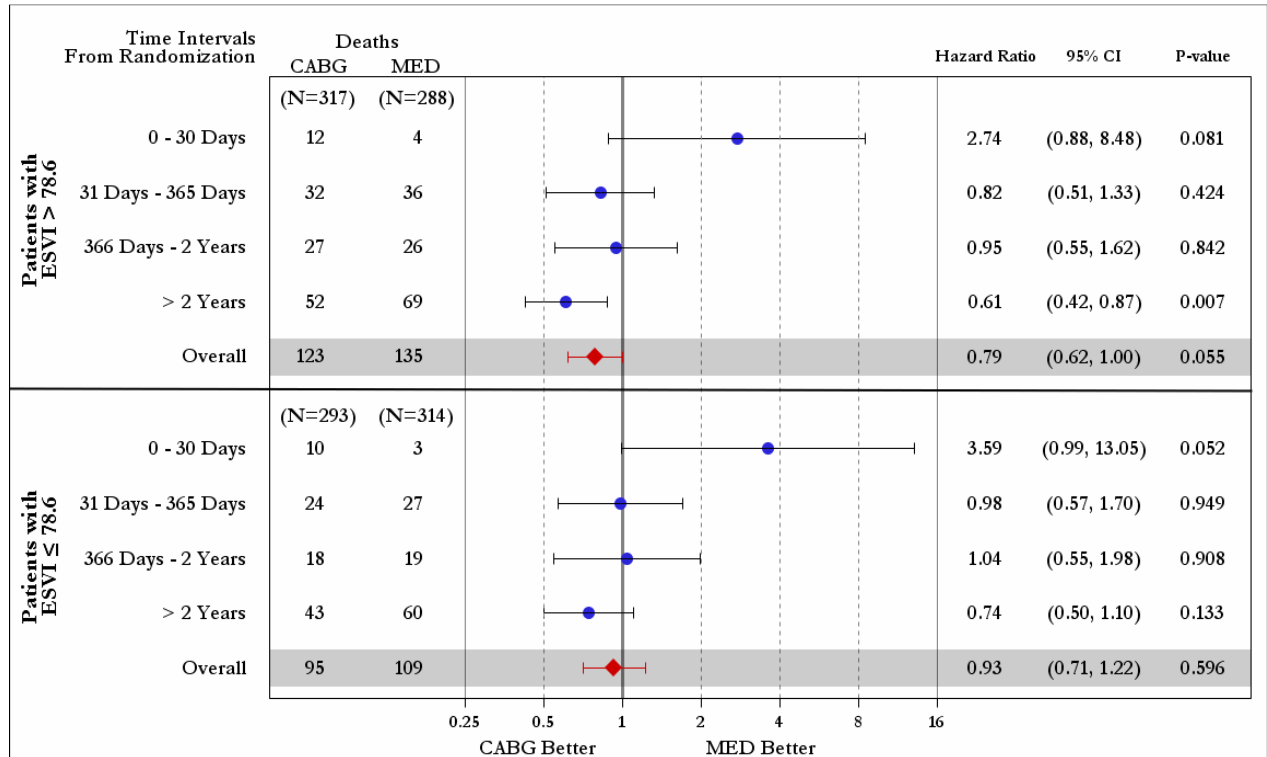
Supplemental Figure 9: Time-dependent Hazard Ratios of All-cause Mortality for CABG vs. MED As Randomized Comparing Patients with LVEF below or above Median (27.6%)



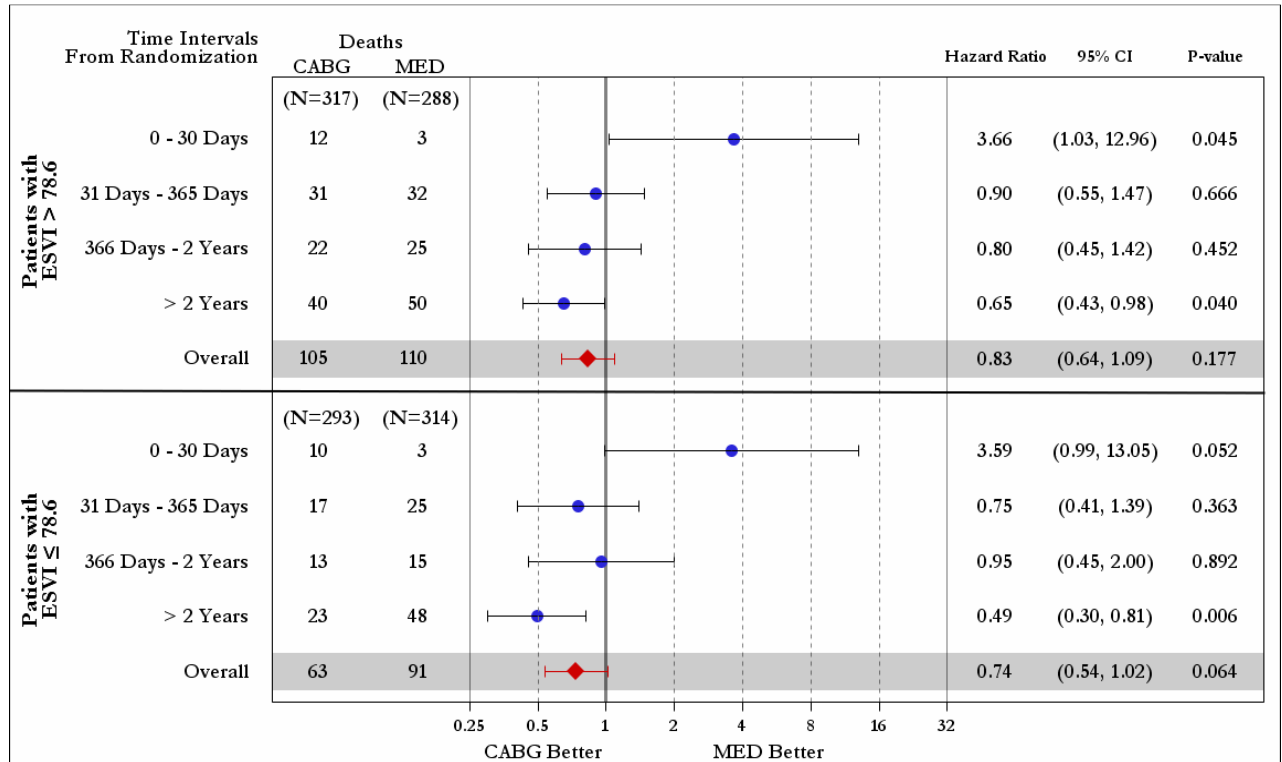
Supplemental Figure 10: Time-dependent Hazard Ratios of Cardiovascular Mortality for CABG vs. MED As Randomized Comparing Patients with LVEF below or above Median (27.6%)



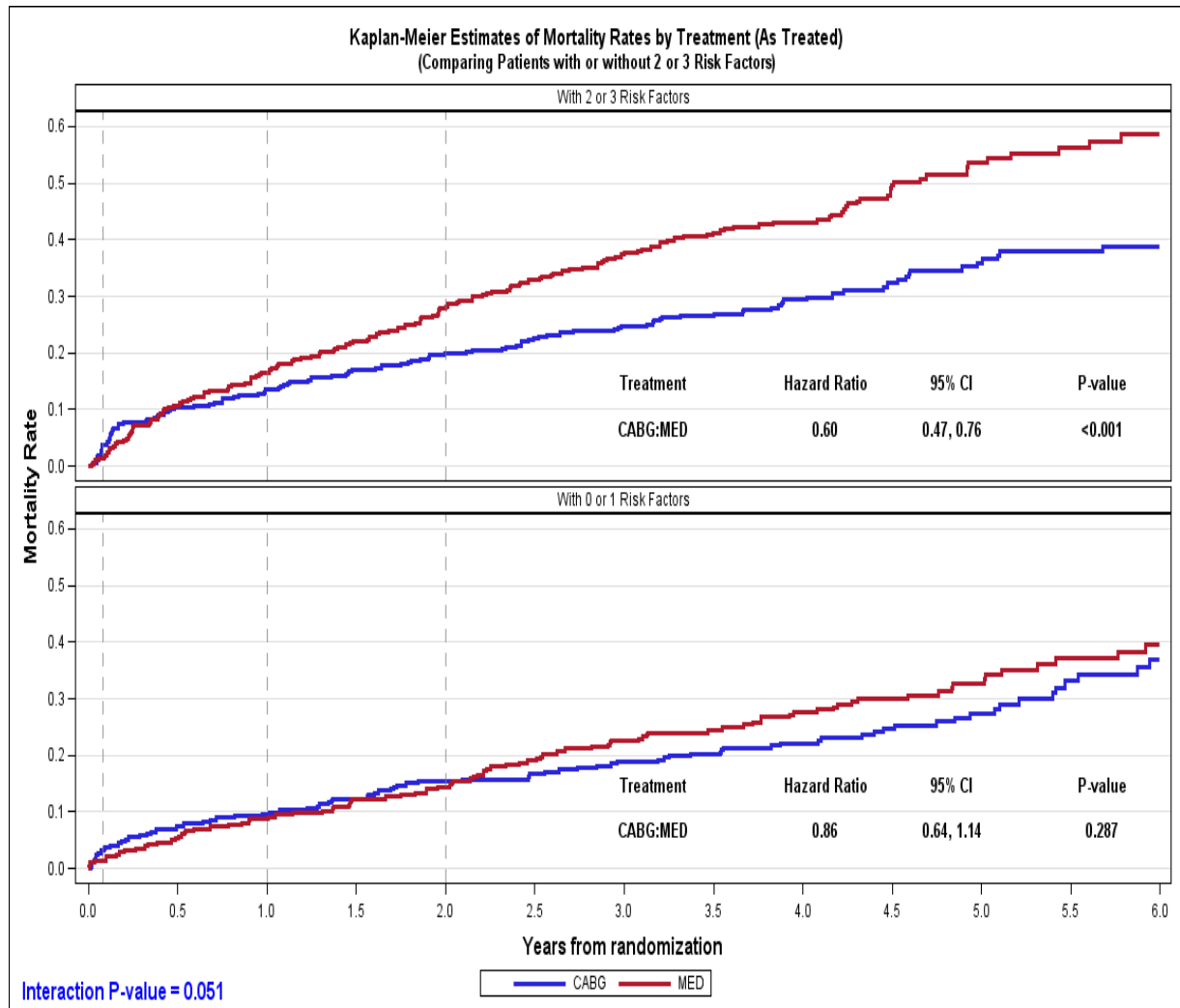
Supplemental Figure 11: Time-dependent Hazard Ratios of All-cause Mortality for CABG vs. MED As Randomized Comparing Patients with ESVI above or below Median (78.6 mL/m²)



Supplemental Figure 12: Time-dependent Hazard Ratios of Cardiovascular Mortality for CABG vs. MED As Randomized Comparing Patients with ESVI above or below Median (78.6 mL/m²)



Supplemental Figure 13: Kaplan-Meier Estimates of Overall Mortality Rates According to Treatment Received—Comparing Patients with 2-3 (upper panel) or 0-1 (lower panel) Prognostic Risk Factors



Supplemental Figure 14: Kaplan-Meier Estimates of Overall Mortality Rates According to the Per Protocol Analysis (i.e., excluding crossovers)—Comparing Patients with 2-3 (upper panel) or 0-1 (lower panel) Prognostic Risk Factors

