



Supplemental Material to:

Marion Debin, Vittoria Colizza, Thierry Blanchon, Thomas Hanslik, Clement Turbelin, and Alessandra Falchi

Effectiveness of 2012–2013 influenza vaccine against influenza-like illness in general population: Estimation in a French web-based cohort

**Human Vaccines & Immunotherapeutics 2013; 10(3)
<http://dx.doi.org/10.4161/hv.27439>**

www.landesbioscience.com/journals/vaccines/article/27439

Effectiveness of 2012-2013 influenza vaccine against influenza-like illness in general population: estimation in a French web-based cohort

M. Debin, T. Blanchon, V. Colizza, T. Hanslik, C. Turbelin, A. Falchi

Supplementary Material

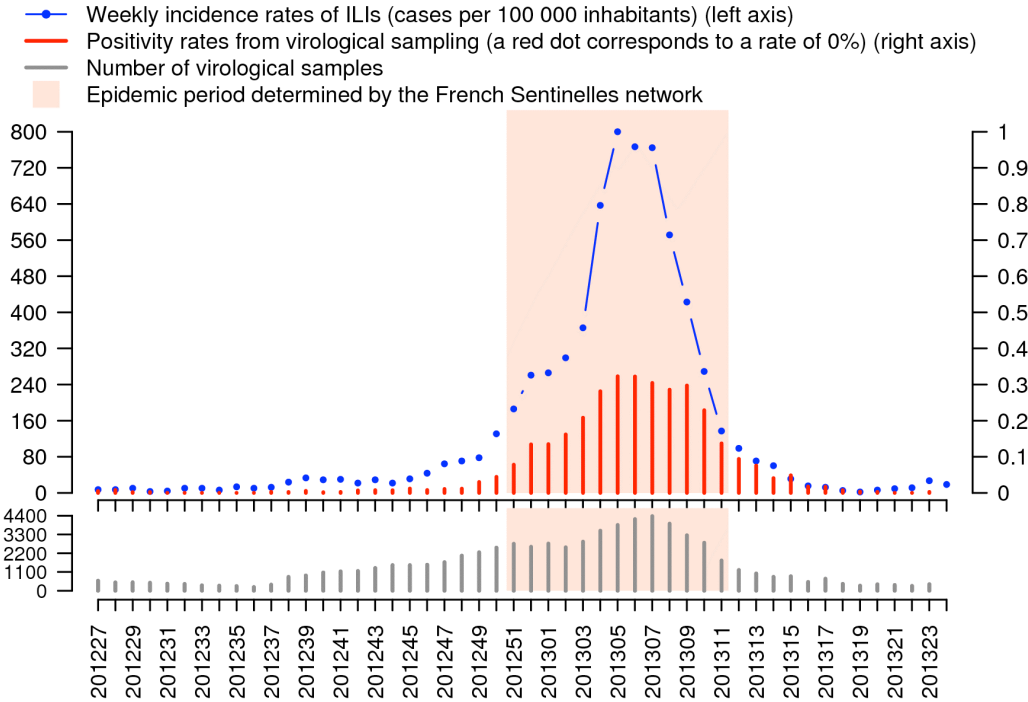
Supplementary Table S1 – List of the indicators gathered in the questionnaires

Intake questionnaire	Weekly questionnaire
Gender	List of registered symptoms: No symptom / Fever / Chills / Runny or blocked nose / Sneezing / Sore throat / Cough / Shortness of breath / Headache / Muscle or joint pain / Chest pain / Feeling tired / Loss of appetite / Coloured sputum / Watery eyes / Nausea / Vomiting / Diarrhoea / Stomach ache / Other
Month and year of birth	
City code of living and work/school place	
Main occupation	
Main job	
Level of education	
Daily contacts with groups of people (patients, children, elderly)	
Composition of the household	
Child going to day-care?	
Mean of transportation	
Daily time in public transports	Location when symptoms started
Frequency of flu/cold	Date of onset
Opinion about vaccination	Date of the end of the symptoms
Reception of a vaccination voucher	Did symptoms develop suddenly?
Size and weight	Date of the beginning of the fever
Vaccination against seasonal influenza this year and the previous year	Did fever develop suddenly?
	Highest temperature measured
Date of vaccination	See or phone a GP / medical service
Raisons for vaccination or non-vaccination	When did you see or phone a GP / medical service?
Regular medication	Did you search info on the Internet?
Pregnancy	Hospitalisation
Smoking	Medication
Respiratory allergies	Prescription or auto-medication
Taking preventive homeopathy	Did you change your routine?
Pets at home	Off work / school
How did you know the study?	Supposed origin of the symptoms (perception)

Supplementary Text S1 – Individuals targeted by influenza vaccination in France in 2012-2013, according to French health authorities

- Age \geq 65
- Pregnancy (at any trimester)
- Obesity (BMI \geq 40)
- Broncho-pulmonary disorder (including asthma)
- Severe cardiac disease
- Chronic renal disease
- Sickle cell disease / thalassemia
- Diabetes mellitus
- Severe neurological or neuromuscular condition
- Paraplegia or tetraplegia affecting diaphragm
- Any immune disorder (HIV infection, immunosuppressive drugs, cancer...)
- Household contact of at-risk newborn
- Living in a social health-care institution

Supplementary Figure S1 – Weekly incidence rates of ILIs and positivity rates from virological sampling for the 2012-2013 influenza season



Weekly national incidence rates of ILI data (blue dashed line) were obtained from the French *Sentinelles* Network. ILI was defined as: sudden fever $\geq 39^{\circ}\text{C}$ (102°F) with myalgia and respiratory signs. Weekly national proportions of confirmed influenza positive samples (virological data, red bar plot) data were downloaded from WHO-FluNet, and came from the French National Reference Centre for influenza (cell culture or PCR test, all influenza virus combined), for France (excluding overseas territories). The grey bar plot at the bottom of the graph corresponds to the number of virological samples analysed per week.