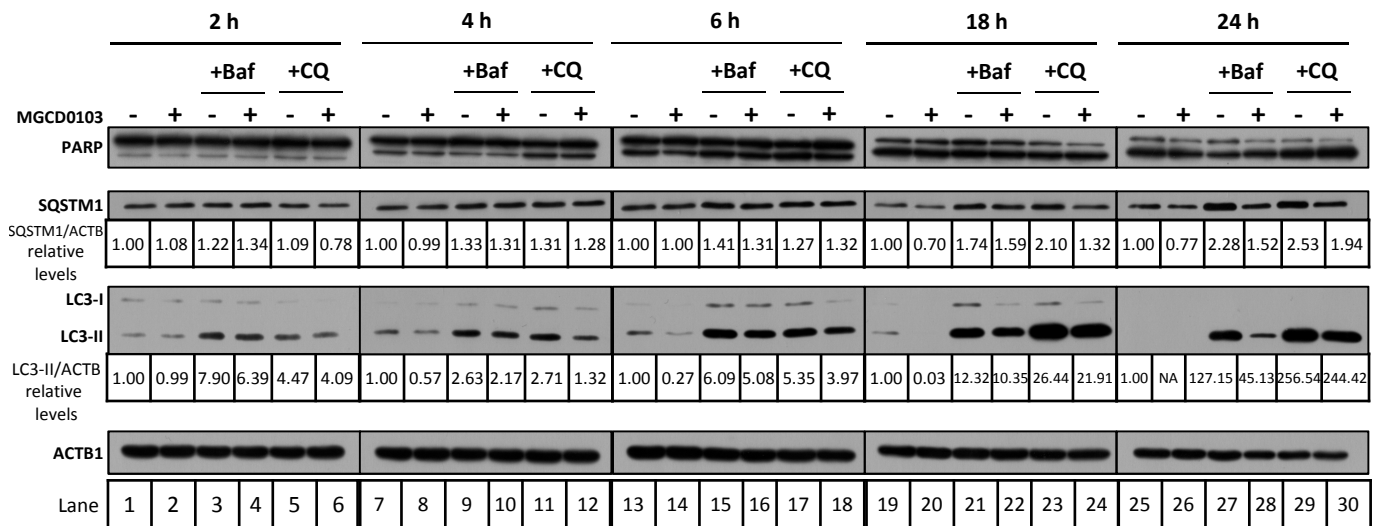
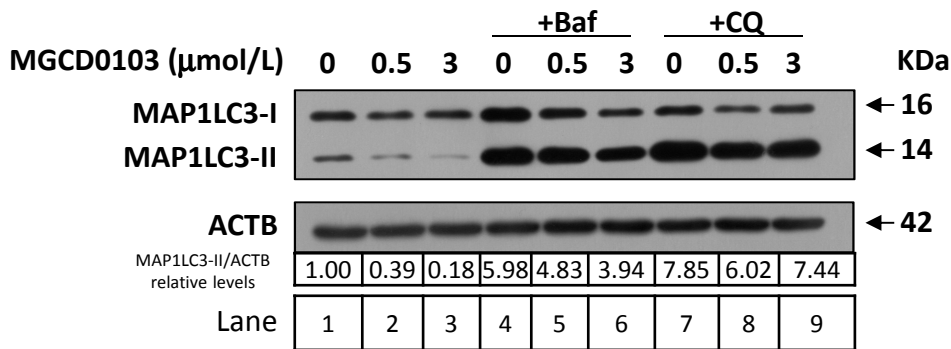


Supplementary Figure 1

**a**



**b**



**Supplementary Figure 1.** MGCD0103 decreases the autophagic flux in primary CLL cells. **(a)** The effect of MGCD0103 (3 μmol/L) on autophagy was assessed by immunoblotting in the presence of chloroquine and bafilomycin A1, in time course experiments. One representative blots from 2 independent experiments is shown. **(b)** The effect of MGCD0103 (0.5 and 3 μmol/L) on autophagy was assessed by immunoblotting in the presence of chloroquine and bafilomycin A1 after an 18-hour treatment. One representative blots from 2 independent experiments is shown. The expression levels of proteins in treated cells relatively to the corresponding untreated control and normalized to ACTB levels are indicated.