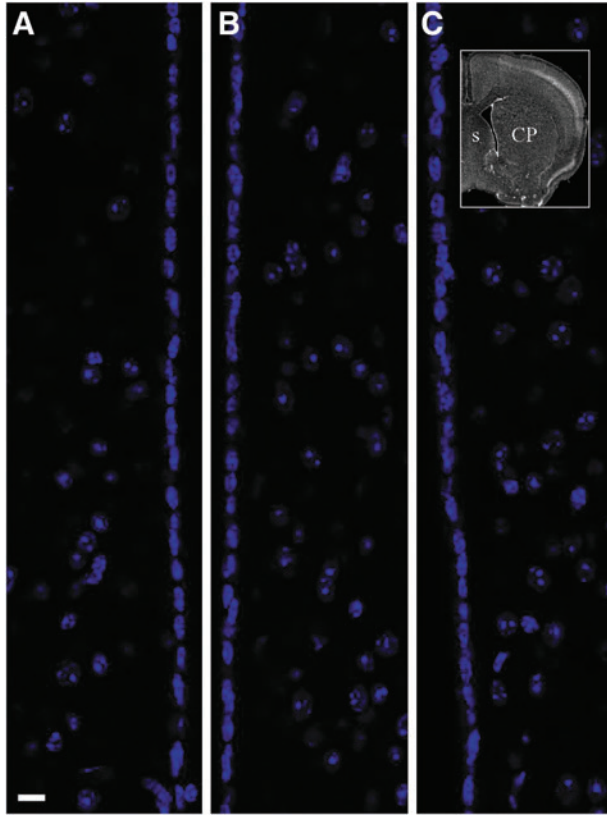


Supplementary Data



SUPPLEMENTARY FIG. S1. No ependymal cell loss after lateral fluid percussion injury. Photomicrographs depicting Hoechst-stained nuclei of ependymal cells lining the lateral ventricle (LV). (A) Contralateral LV of an injured mouse; (B) ipsilateral LV of the injured mouse; and (C) ipsilateral LV of a sham mouse. Images were acquired at the rostral level of LV (inset). Scale, 10 μm .