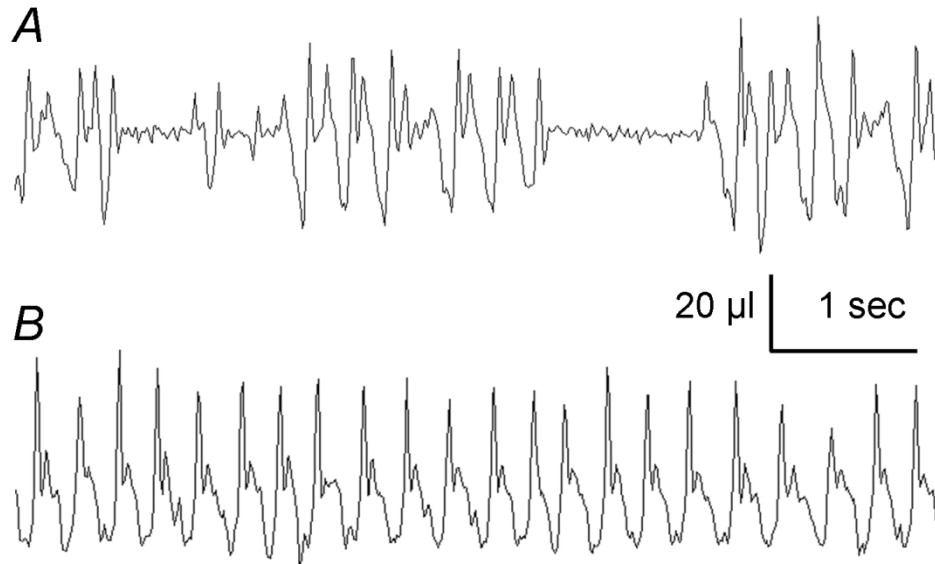


Supplemental Figure 1
Zhang et al.



Supplemental Figure 1. *In vivo* measurement of breathing pattern in *Mecp2*-null (A) and WT mice (B). Experiments were done in an open-flow plethysmography recording system. Under normal flowing air ventilation, the *Mecp2*-null mouse displayed typical alternating periods of fast and slow respiratory frequency with frequent apneas of variable duration showing high level of frequency variability. The inspiration amplitude also showed high levels of variability.