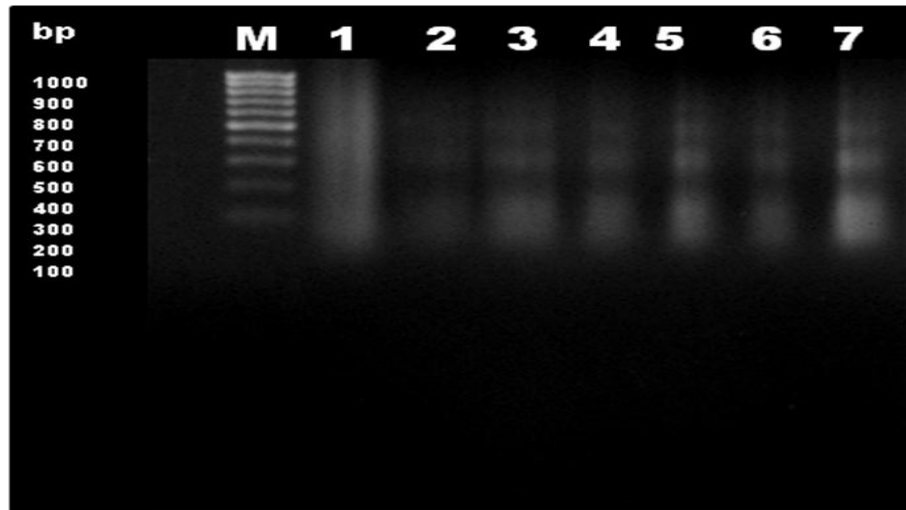
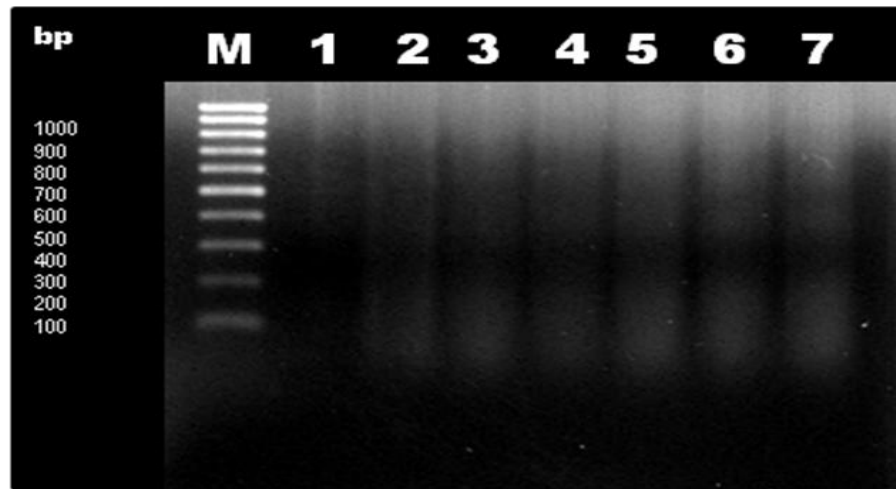


(A)

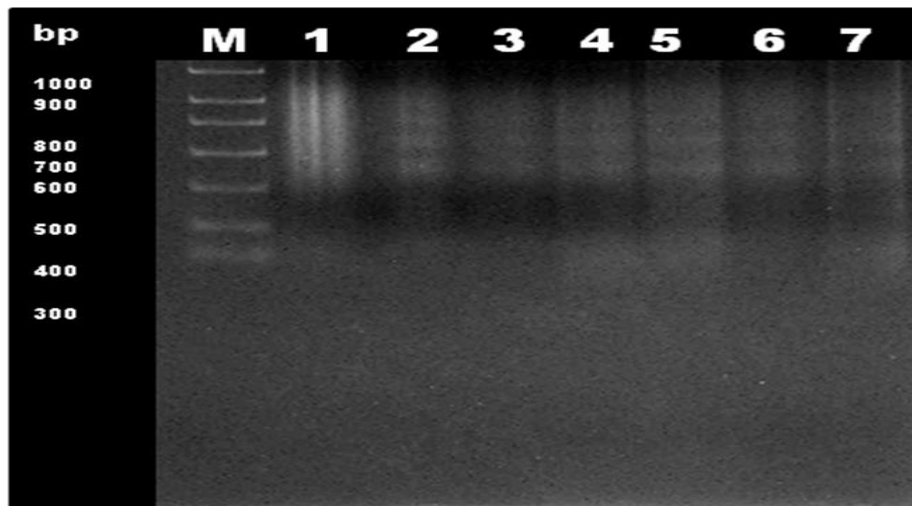


(B)

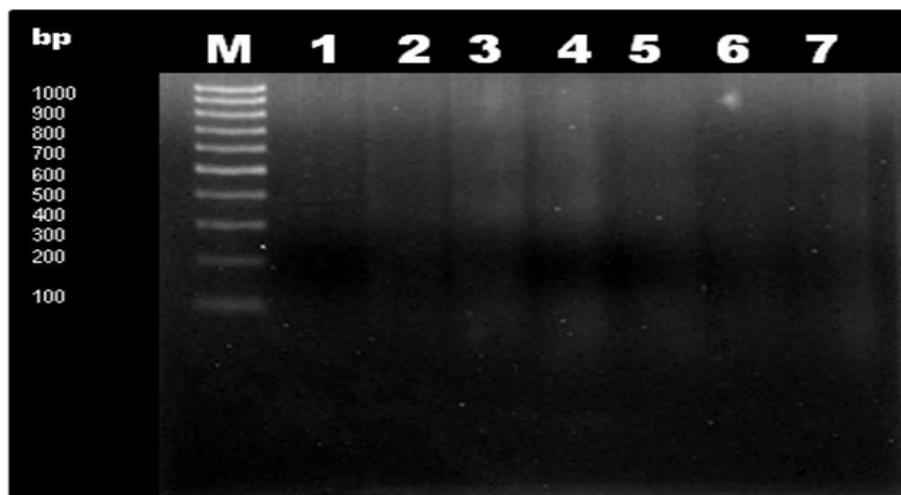


Supporting 1: Expression of DNA fragments from KB (A) and ORL-48 (B) cells after treatment with various concentrations of *A. indica* extract. Lane 1, negative control; Lane 2-7, cancer cells treated with 1.0, 10.0, 25.0, 50.0, 75.0 and 100.0 $\mu\text{g}/\text{mL}$ of *A. indica* extract, respectively.

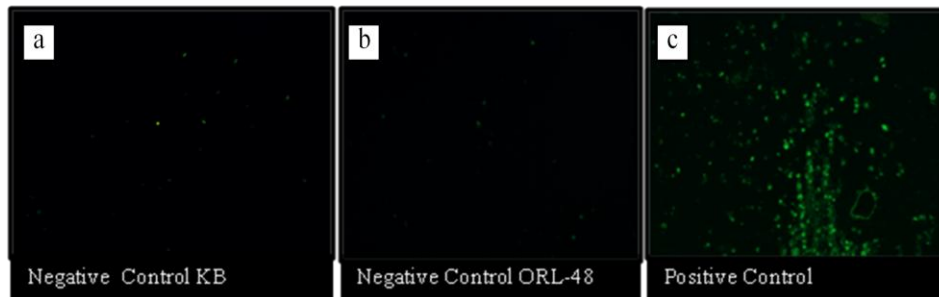
(A)



(B)



Supporting 2: Expression of DNA fragments from KB (A) and ORL-48 (B) cells after treatment with various concentrations of *T. flagelliforme* extract. Lane 1, negative control; Lane 2-7, cancer cells treated with 1.0, 10.0, 25.0, 50.0, 75.0 and 100.0 $\mu\text{g}/\text{mL}$ of *T. flagelliforme* extract, respectively.



Supporting 3: Images of untreated KB (a) and ORL-48 (b) cells to represent as negative control and (c) actinomycin D-treated cells to represent as positive control. Observed the presence of green fluorescent spots showing the presence of apoptotic cells following treatment with Actinomycin D. (10x magnification).