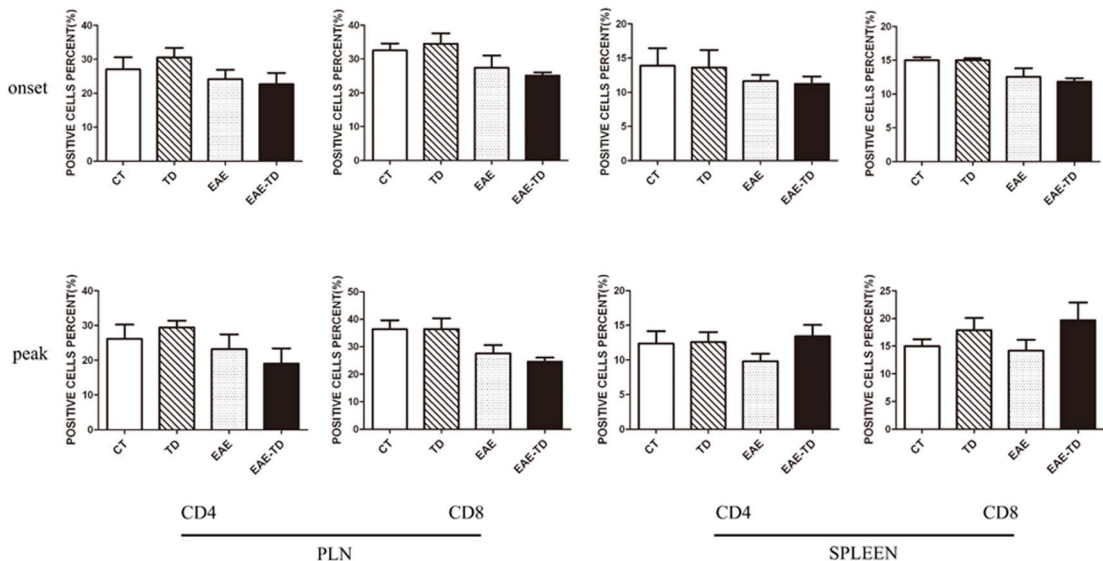
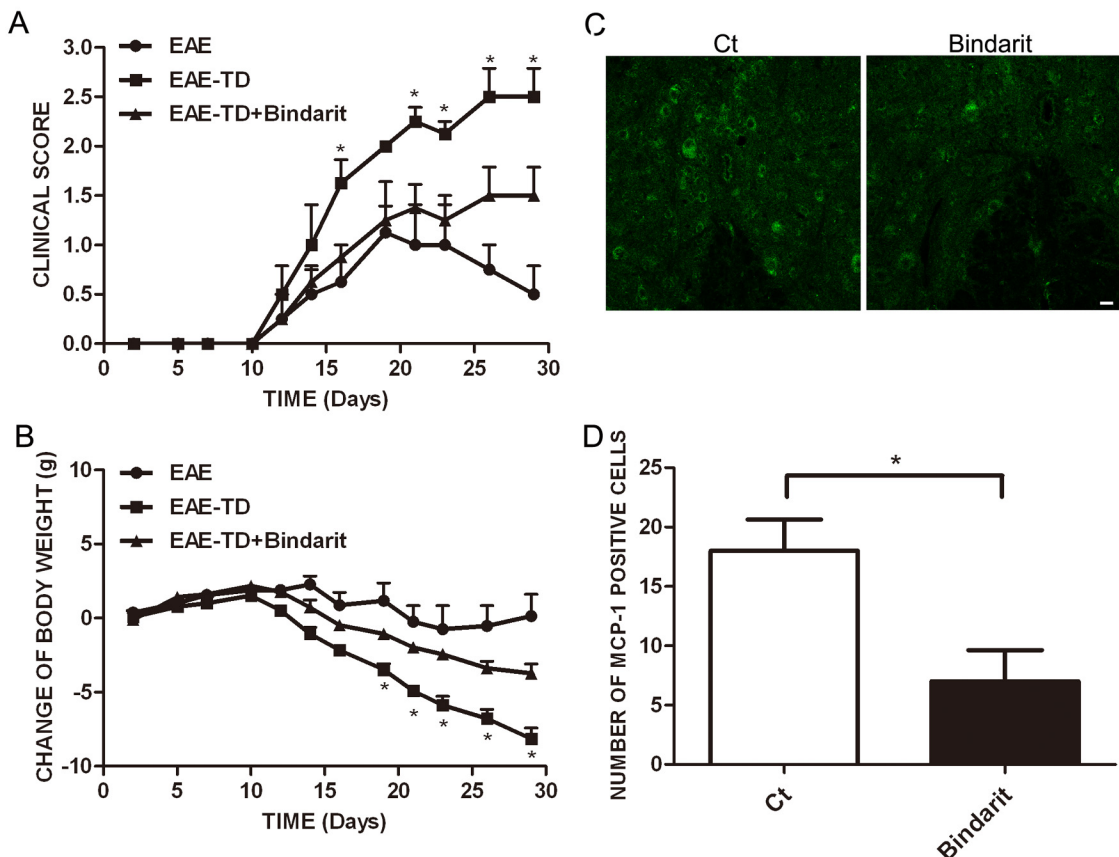


Sppl Figure 1

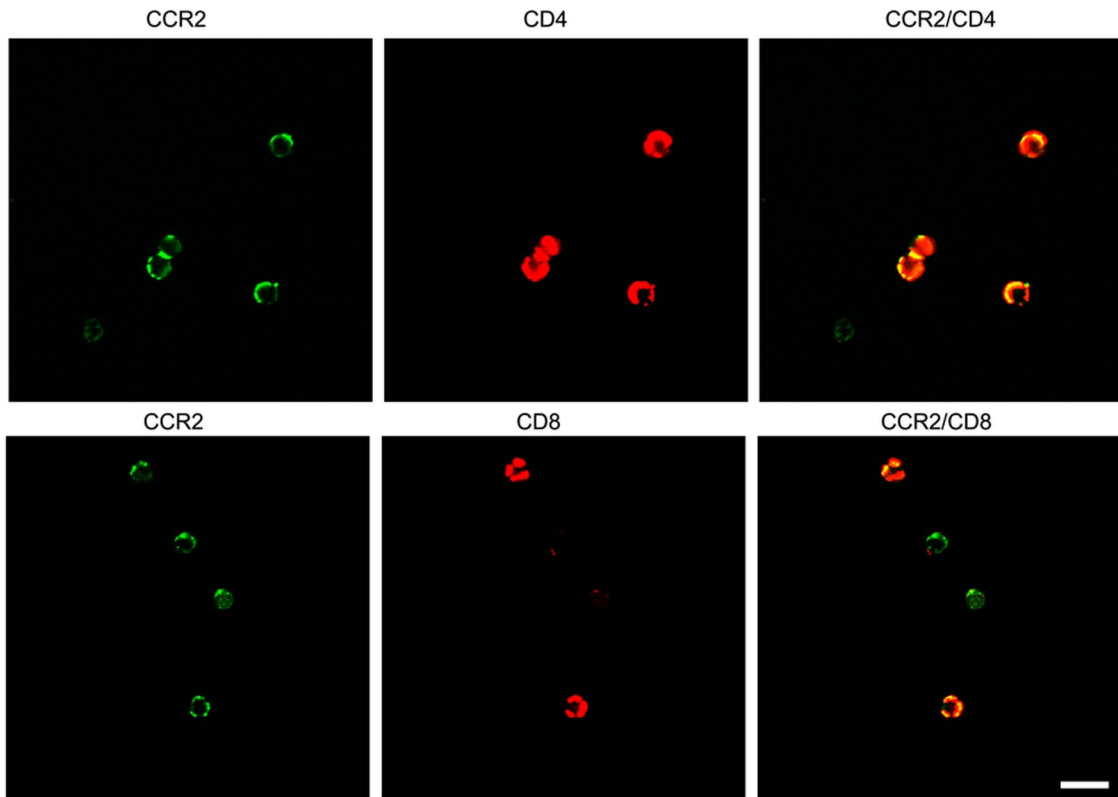


Supplementary Figure 1. Effect of TD on the proportion of CD4+ and CD8+ T lymphocytes in spleen and lymph node of EAE mice. Spleen and Lymph node cells were isolated from EAE mice with or without TD after 10 and 20 days of induction. The percentage of CD4 and CD8 producing cells were measured by FACS. Data were presented as mean \pm SD; * $p < 0.05$, compared with EAE group. $n = 8$ for each group.



Supplementary Figure 2. Effect of Bindarit on the progression of EAE with TD. EAE was induced in C57BL/6 mice by injection of MOG35-55 with or without TD as described under the Materials and Methods. Mice were given daily i.p. injection of bindarit for three consecutive days, beginning one day before MOG immunization (day -1). After that mice received injection of bindarit every other day. The clinical score (A) and body weight (B) was determined in these mice as described under the Materials and Methods. Data were presented as mean \pm SEM; * p < 0.05, compared with EAE mice; n = 8 for each group; The expression of CCL2 in the spinal cord (C) was determined by IHC on day 20 after bindarit injection. Bar = 20 μ m. The number of CCL2-positive cells (D) was quantified as described under the Materials and Methods. n = 5 for each group.

Sppl Figure 3



Supplementary Figure 3. T lymphocytes express CCR2. The expression of CCR2 on T lymphocytes was measured by immunofluorescent staining. Single-cell suspensions were isolated from lymph nodes, and stained by method described in material and methods. The expression of CCR-2 on CD4+ and CD8+ T lymphocytes was analyzed by Zeiss LSM 510 Meta confocal microscope. Bars = 20 μ m.