

Table S1. Number of controls and patients with cytokine concentrations below the 5th, 10th and 20th percentile of the whole population after stimulation of peripheral blood mononuclear cells (PBMC) with *Candida albicans* (10⁵/mL).

Percentile	IFN- γ (n=113)			IL-17A (n=94)			IL-22 (n=69)		
	Conc (pg/mL)	Control	Patient	Conc (pg/mL)	Control	Patient	Conc (pg/mL)	Control	Patient
5 th	8	0	10	42	2	6	78	0	9
10 th	18	2	18	116	4	13	94	0	12
20 th	48	10	30	252	8	26	203	3	21

Abbreviations: conc, concentration

Table S2. Inter-test agreement for IFN- γ , IL17A and IL-22 production. P-value shown for the comparison between the 5% and 10% cutoff value (middle row) and between the 5% and 20% cutoff value (last row).

Cutoff	WB		IFN- γ		PBMC		IL-22	
	IFN- γ (n=7)	p	IFN- γ (n=24)	p	IL-17A (n=19)	p	IL-22 (n=12)	p
5%	57%	ref	71%	ref	100%	ref	83%	ref
10%	43%	1.0	67%	0.76	79%	0.10	58%	0.37
20%	57%	1.0	67%	0.76	53%	0.001	50%	0.19

Abbreviations: WB, whole blood stimulation, PBMC, peripheral blood mononuclear cell stimulation, ref, reference.

Table S3. Proportion of patients with infectious diseases (n=117), stratified according to microbial etiology, for the different cutoff values.

ID Group	5%	p ^a	10%	p ^a	20%	p ^a	p ^b	p ^c
Viral	3/16 (19%)	0.06	4/16 (25%)	0.01	4/16 (25%)	<0.001	1.0	1.0
Bacterial	6/36 (17%)	0.01	10/36 (28%)	0.005	19/36 (53%)	0.004	0.26	0.001
Mycobacterial	7/16 (44%)	0.72	9/16 (56%)	0.46	10/16 (63%)	0.08	0.48	0.29
Fungal, mucocutaneous	13/33 (39%)	0.48	15/33 (46%)	0.12	21/33 (64%)	0.03	0.62	0.04
Fungal, invasive	8/16 (50%)	ref	11/16 (69%)	ref	15/16 (94%)	ref	0.28	0.01

^a p: fungal invasive group is the reference (ref) group

^b p comparison between proportion of affected patients within one ID group using 5% and 10% as cutoff values

^c p comparison between proportion of affected patients using 5% and 20% within one ID group as cutoff values

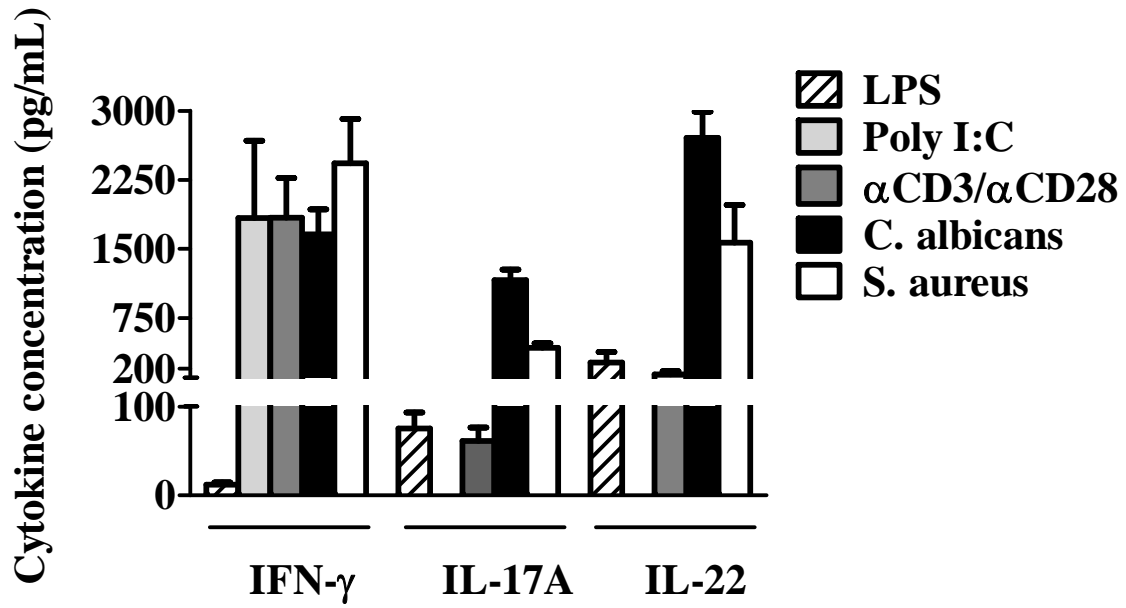


Figure S1. Production of IFN- γ , IL-17A and IL-22 upon stimulation with LPS, Poly I:C, α CD3/ α CD28, heat-killed (HK) *C. albicans* conidia, and HK *S. aureus* in healthy volunteers in the PBMC stimulation assay. Bars indicate standard error of the mean.

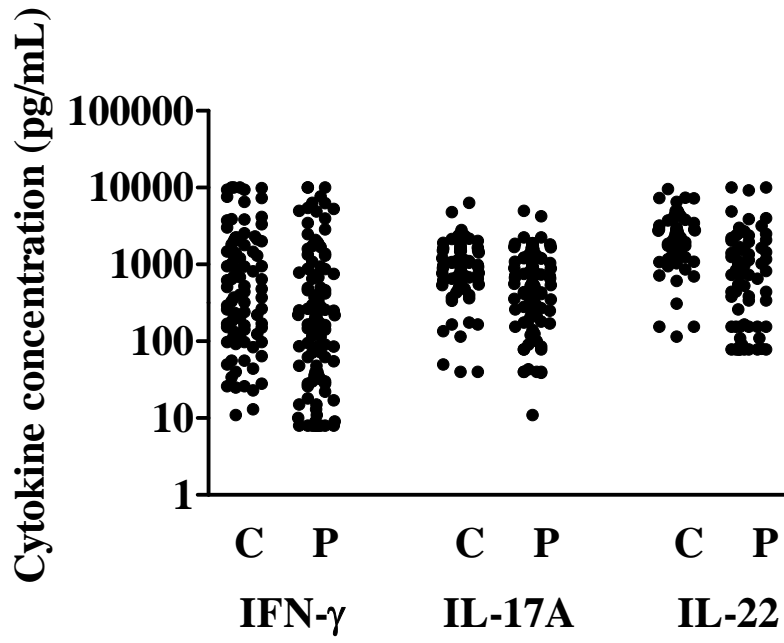


Figure S2. IFN- γ , IL-17A and IL-22 production by peripheral blood mononuclear cells from healthy volunteers (C) and patients (P) after stimulation with *Candida albicans* (10^5 /mL).

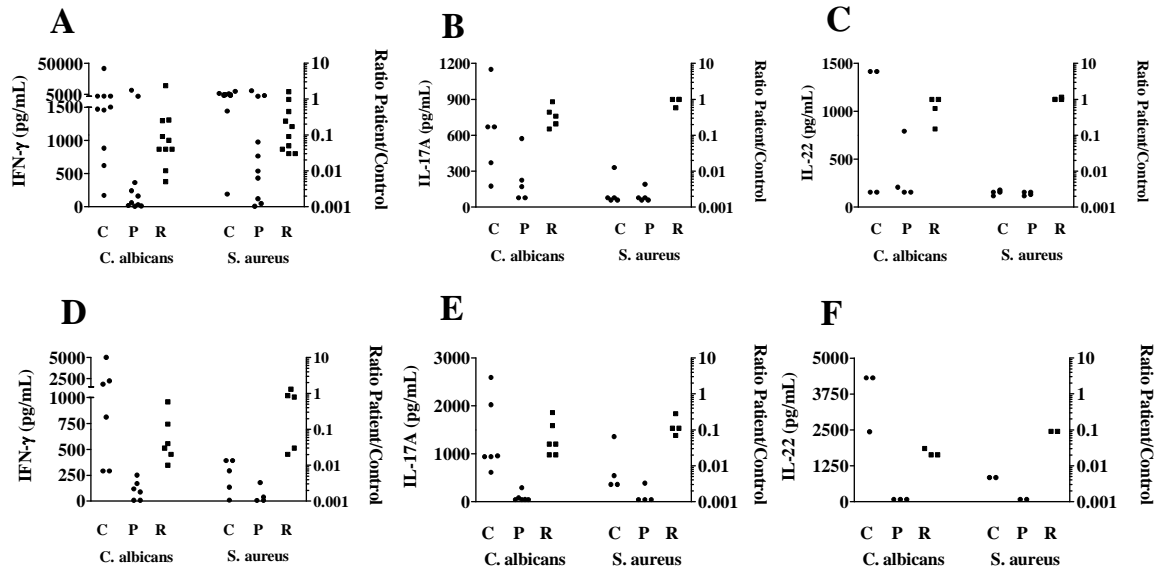


Figure S3. IFN- γ (whole blood and PBMC stimulation), IL-17A and IL-22 production in patients (column with P) hyper IgE syndrome (panel A-C) and chronic mucocutaneous candidiasis (panel D-F) compared to healthy controls (column with C). The ratio of IFN- γ , IL-17A and IL-22 production between patients and healthy volunteers are shown in the column with R.