

Number	Sequence ^a	Dominant	I-Ak+	Differentially affected (IL-4)
1	KEKTWVTIYYGVFVWREATT			
2	GVFVWREATTTLFCASDAKA			x
3	TLFCASDAKAYDTEVHNVWA		xx	x
4	YDTEVHNVWA ^a THACVPTDPN		x	x
5	THACVPTDPN PQEVVL GNVT		x	x
6	PQEVVLGNVTENFNMMWKNM	x		
7	ENFNMMWKNMVD QMHEDIIS		x	x
8	VDQMHEDIISLWDESLKPCV			
9	LWDESLKPCVKLTPFLCVTLN			
10	KLTPFLCVTLNCTNLNITKNT			
11	CTNLNITKNTTNPTSSSWG			
12	TNPTSSSWGMMKEGEIKNCS			
13	MEKGEIKNCSFYITTSIRNK			
14	FYITTSIRNKVKKEYALFNR			
15	VKKEYALFNRLDVPVPIENTN			
16	LDVVP IENTNNTKYRLISCN		x	x
17	NTKYRLISCNTSVITQACPK			
18	TSVITQACPKVSFOPIPIHY			
19	VSFQPIPIHYCVFAGFAMLK	x		
20	CVFAGFAMLKCNNTFNGSG			x
21	CNNKTFNGSGPCTNVSTVQC			
22	PCTNVSTVQCTHGIRPVVST			
23	THGIRPVVSTQLLNGSLAE			
24	QLLNGSLAEED DIVIRSENF		x	x
25	EDIVIRSENF TDNAKTIIIVQ		x	x
26	TDNAKTIIIVQ LNESVVINCT		x	x
27	LNESVVINCTRFNNNTRRRL			x
28	RFNNNTRRRLSIGPGRAFYA			x
29	SIGPGRAFYARRNIIGDIRQ			
30	RRNIIG DIRQ AHCNISRAKW	x	x	
31	AHCNISRAKWNTLQQIIVIK			
32	NNTLQQIIVIKLREKFRNKTI	x		
33	LREKFRNKTIAFNQSSGGDP			x
34	AFNQSSGG DPEIVMHS FNCG		x	x
35	EIVMHSFNCGGEFFYCNTAQ			x
36	GEFFYCNTAQLFNSTWNVGTG			x
37	LFNSTWNVGTGNGTEGNDI			x
38	GTNGTEGNDI ITLQCR IKQI		x	
39	ITLQCRIKQIINMWQVKGKA	x		
40	INMWQVKGKAMYAPPITGQI			
41	MYAPPITGQIRCSSNITGLL			x
42	RCSSNITGLLITRDGGNSTE			
43	LITRDGGNSTE TE IFRPGG		x	x
44	TEIFRPGG DMRDNR SE		x	x
45	DMRDNR SELYKY KVVRIE		x	x
46	LYKYKVVRIEPIGVAPTRAK			
47	PIGVAPTRAKRRTVQREKRA	x		

^a Bold underlined sequence indicates I-Ak-binding motif(s)

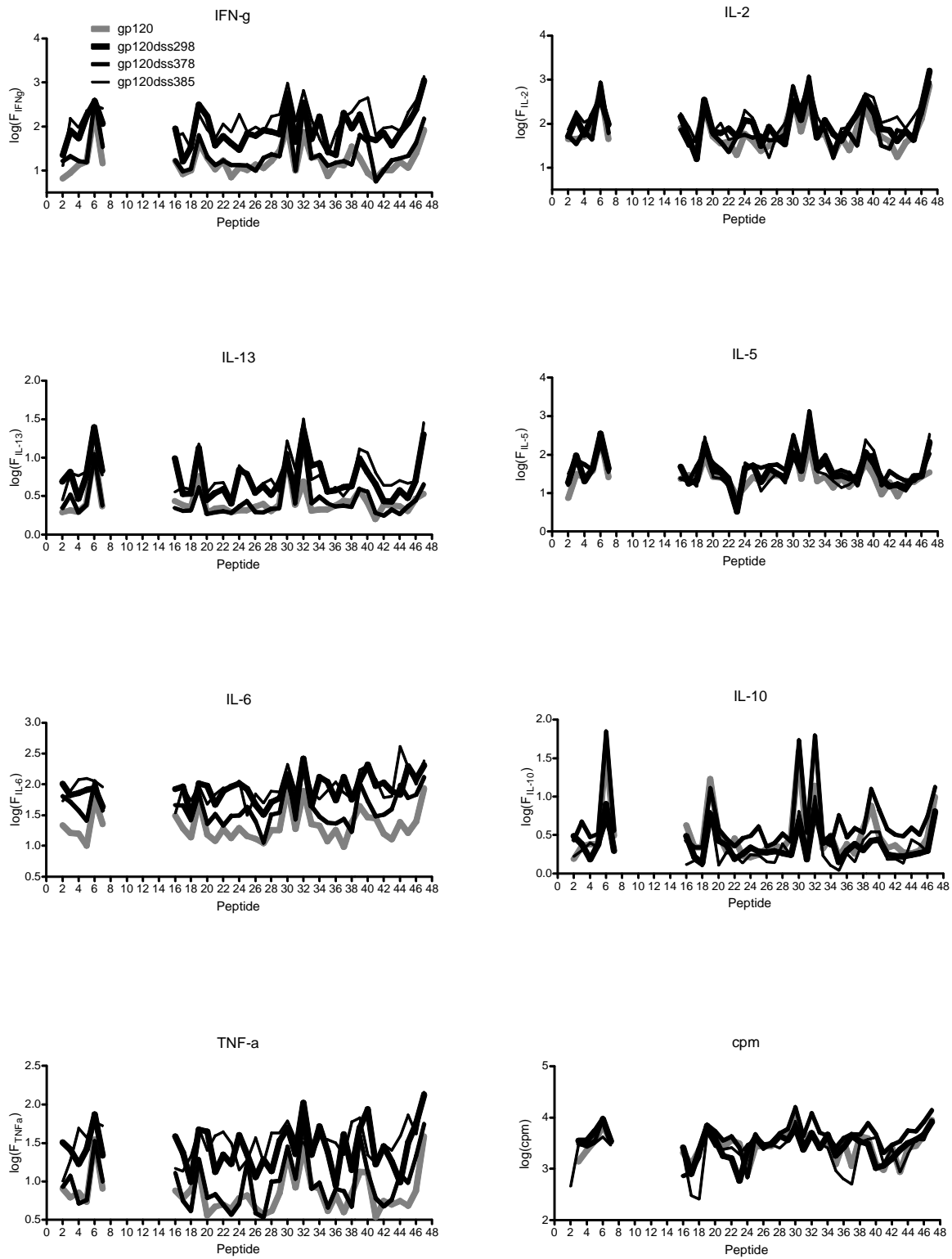


Figure S1. Average peptide-specific responses following immunization of nine mice with wild-type or disulfide-variant gp120. Responses were broadly greater for the disulfide variants.

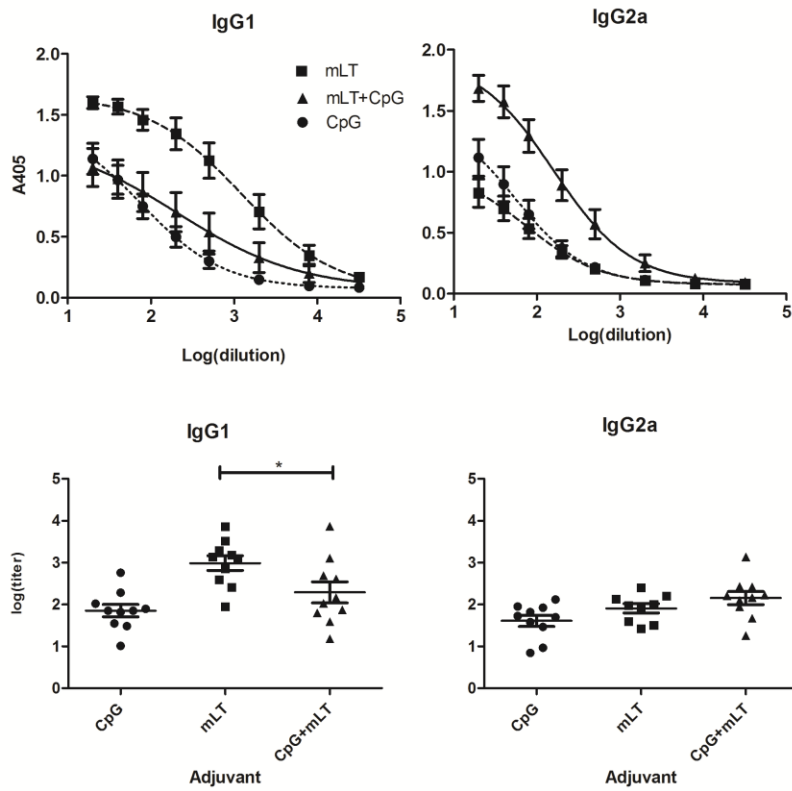


Figure S2. Shift in the subtype composition of gp120-specific antibody caused by inclusion of CpG with mLT in the adjuvant formulation. The concentration of IgG1 decreased, and the Log(titer) of IgG1 shifted to a lower value. The concentration of IgG2a increased.