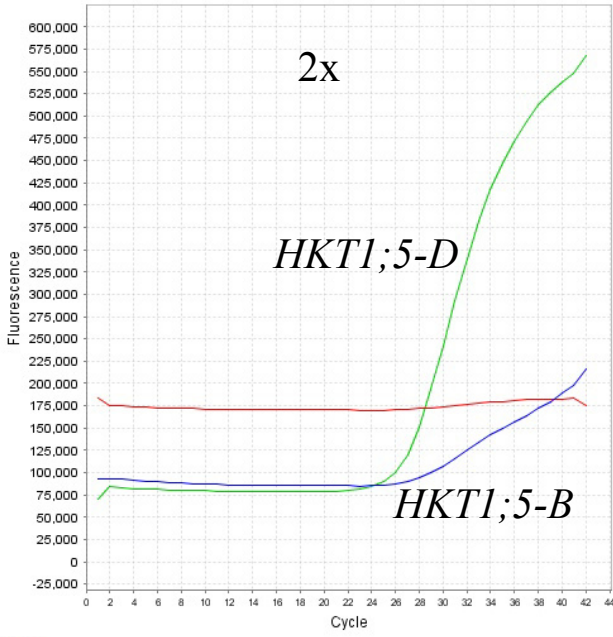
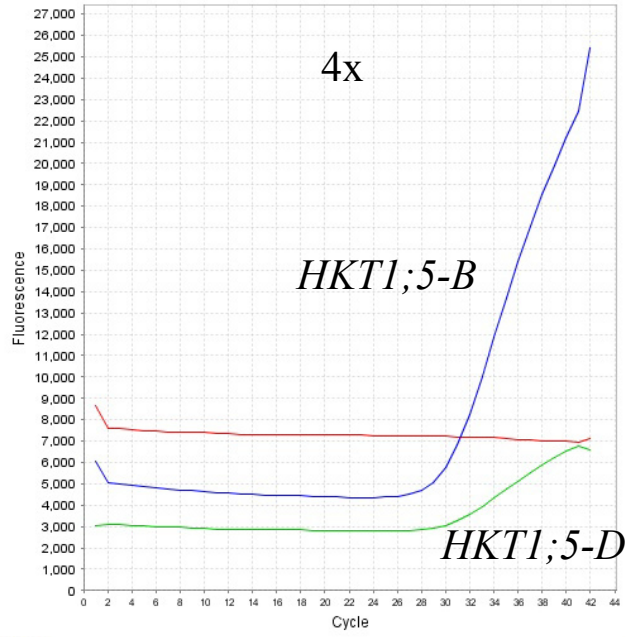


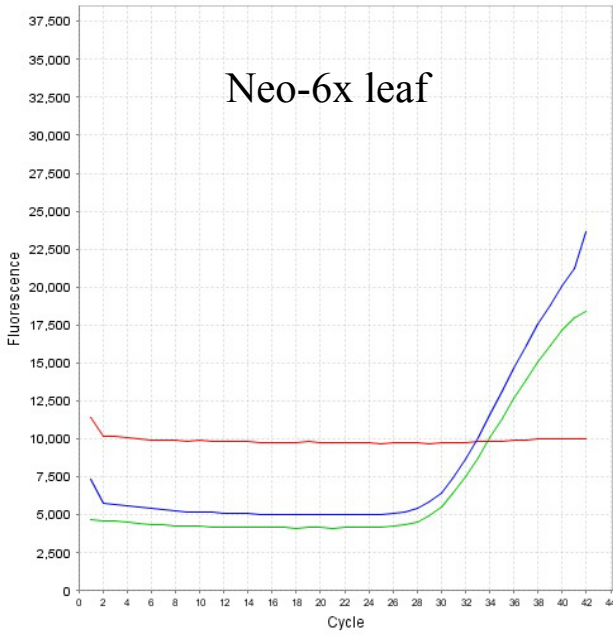
Multicomponent Plot



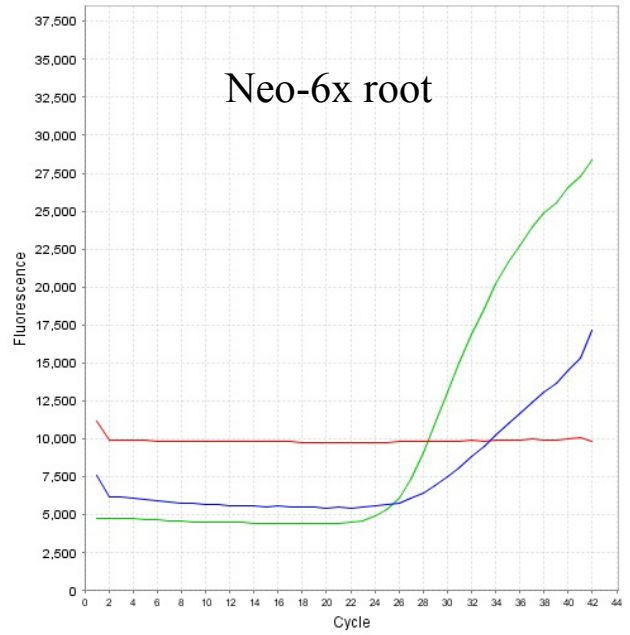
Multicomponent Plot

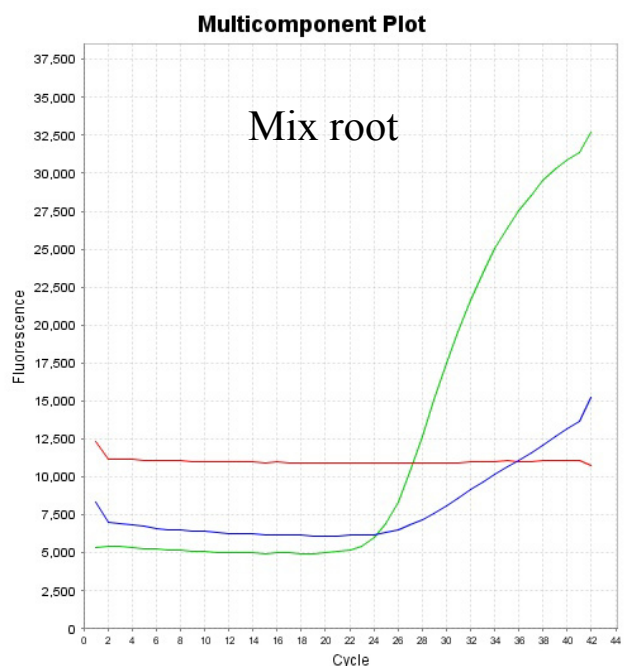
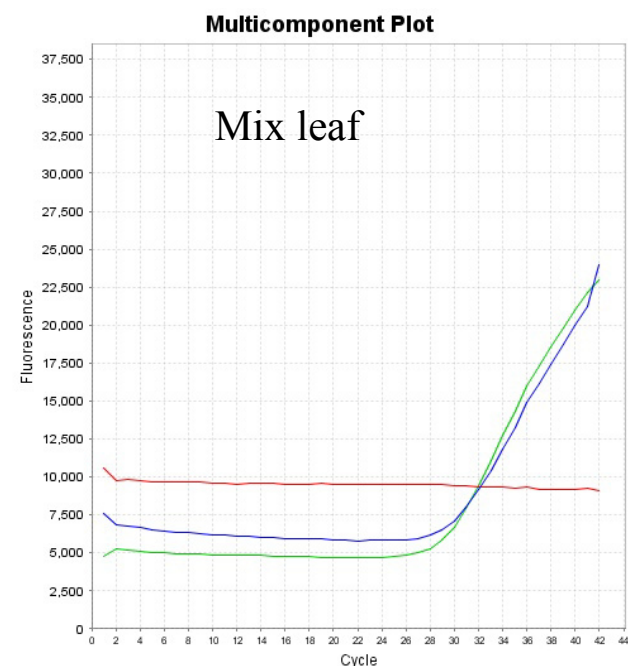
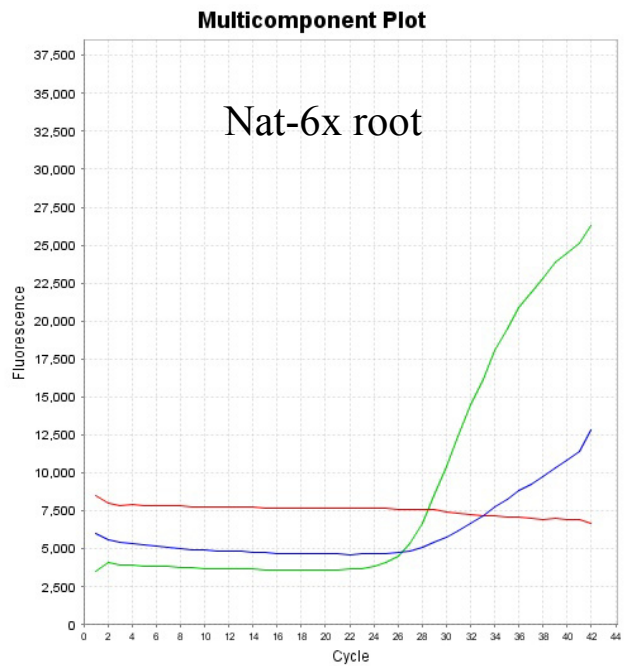
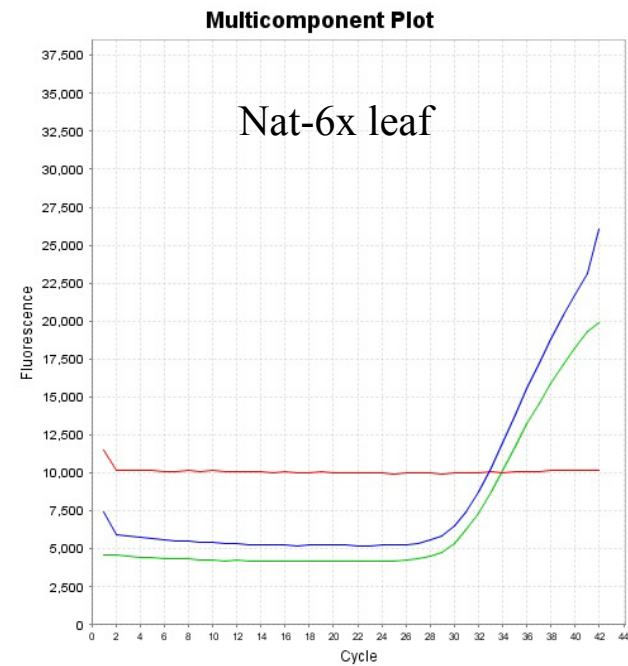


Multicomponent Plot



Multicomponent Plot





Dataset S4 Examples of PCR amplification curve of the TaqMan® SNP Genotyping Assay used to measure relative expression levels of *HKT1;5-D* and *HKT1;5-B*. The blue, green and red amplification curves indicate amplifications of *HKT1;5-B* (labeled with FAM dye), *HKT1;5D* (labeled with VIC dye), and the reference dye (ROX), respectively. In both parental genotypes (2x and 4x), a weak amplification of non-target gene was observed: in 2x a weak amplification of *HKT1;5-B*, and in 4x a weak amplification of *HKT1;5-D*. These weak non-target amplifications were unlikely to affect the results because they only constitute small fractions of the total amplified product and therefore have negligible effects on the relative expression ratio of *HKT1;5-D* vs. *HKT1;5-B*.