

Figure S1

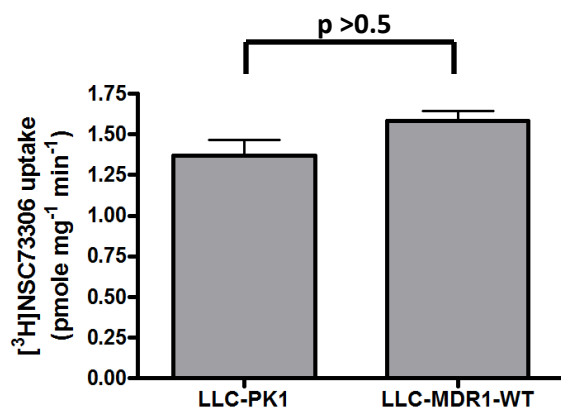


Figure S1. Initial drug uptake rate of [³H]NSC73306 in LLC-PK1 cells and LLC-MDR1-WT cells. LLC-PK1 and LLC-MDR1-WT cells were treated with [³H]NSC73306 in 37 °C for 5 min following cell lysis and scintillation counting. The initial uptake rate were calculated. Statistical significance were determined by Graphpad Prism.

Figure S2

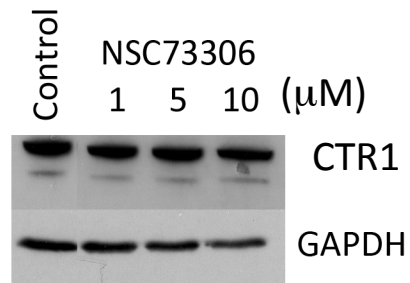


Figure S2. CTR1 protein remains stable after 3 hr incubation with NSC73306. KB-3-1 cells were treated with different concentrations of NSC73306 in 37 °C for 24 hrs following cell lysis and immunoblotting. Cells treated with DMSO were a control. CTR1 was detected by the anti-CTR1 antibody. The same blot was re-probed with anti-GAPDH monoclonal antibody as a loading control.