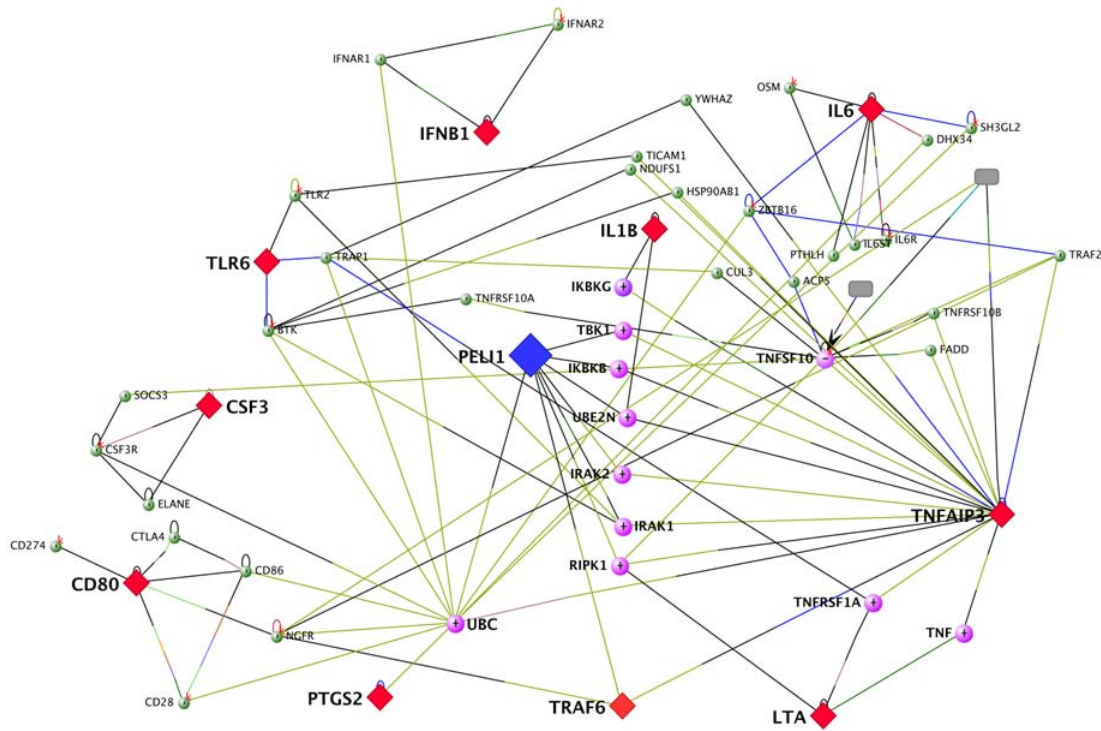
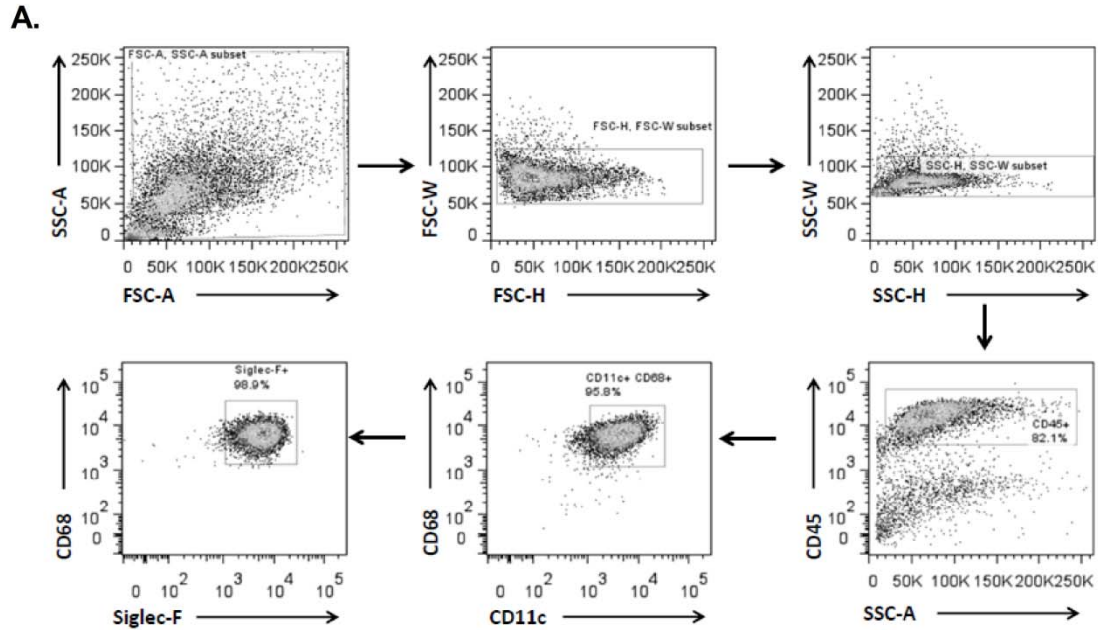


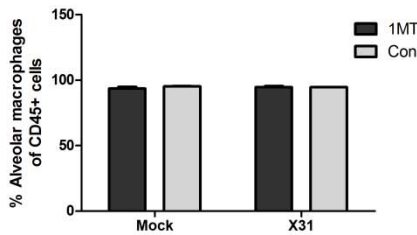
Supplementary Figures



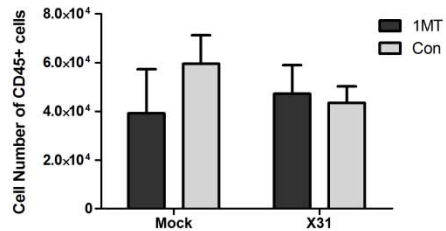
Supplementary Figure 1. Interaction of genes identified in TLR array. VisANT was used to determine protein interactions for genes up-regulated with 1MT treatment (red diamond) with peli1 (blue diamond). Connections shown are representative of known protein interactions of Homo sapiens since more data exists as compared to Mus musculus.



B.



C.



Supplementary Figure 2. Alveolar macrophage phenotyping and purity. Mice were pretreated with 1MT or Con water for 3 days prior to intranasal infection with 10^3 PFU of X31 or mock infected. Alveolar macrophages were isolated from BAL collected 24h post-infection. (A) Representative dot plots of the isolated cell population from BAL. (B) Percentage and (C) frequency of the alveolar macrophage population isolated from the BAL.