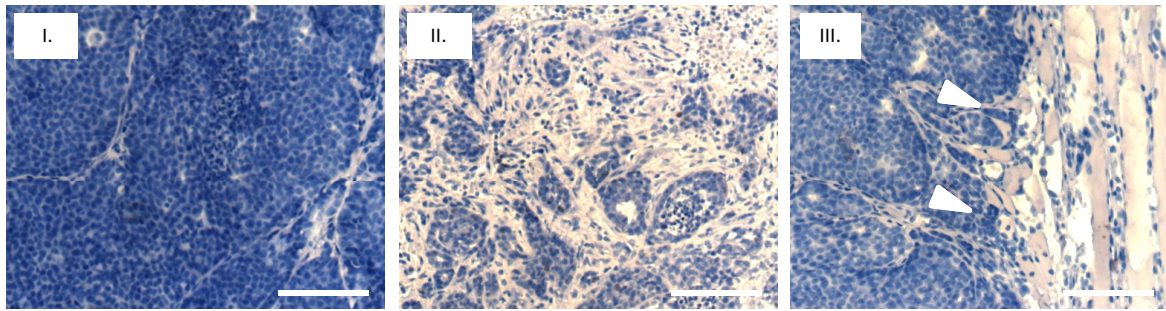
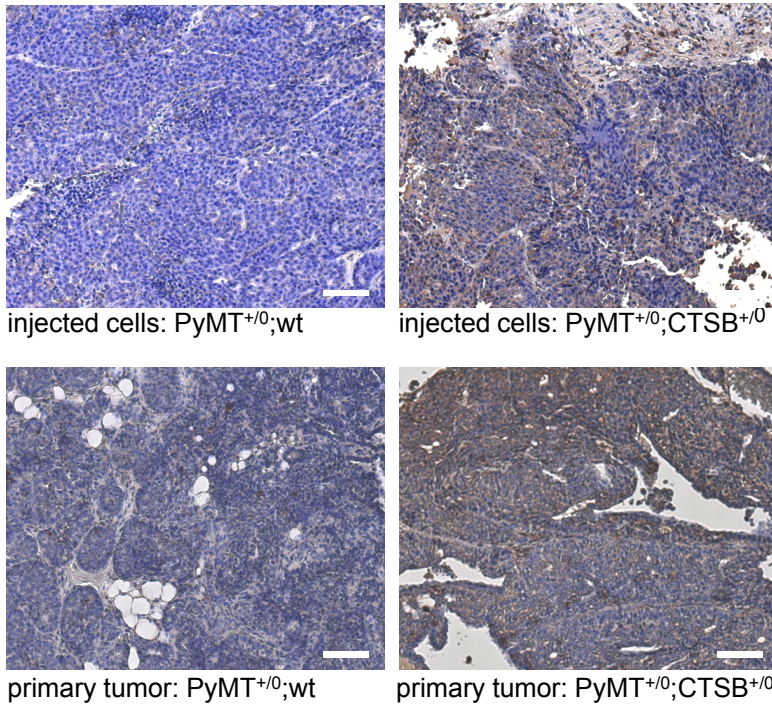


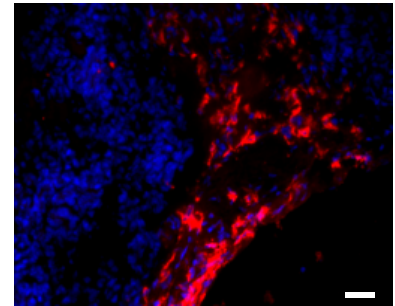
a hematoxylin staining



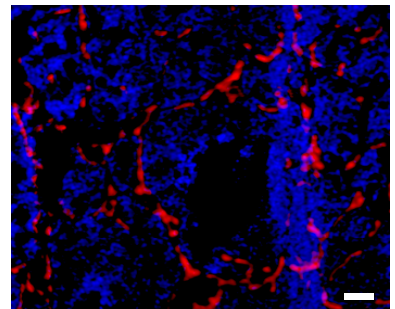
b human CTSB staining



c F4/80 staining



d CD31 staining



Supplementary figure 1. Histology of tumors derived from orthotopic transplantation (OT) of primary PyMT tumor cells. *a*, Hematoxylin staining of different regions of the same tumor showing an undifferentiated region (I.), a stroma-rich site (II.), and the invasive front of the tumor invading into the breast muscle (arrow heads) (III.). *b*, human CTSB peroxidase staining on OT tumors derived from injection of PyMT⁺⁰;wt and PyMT⁺⁰;CTSB⁺⁰ cancer cells, primary PyMT⁺⁰;wt and PyMT⁺⁰;CTSB⁺⁰ tumors as controls. *c*, F4/80 fluorescence staining on tumor cryosection for monocytes/macrophages. *d*, CD31 fluorescence staining on tumor cryosection for detection of endothelial cells. All scale bars equals 100 μ m.