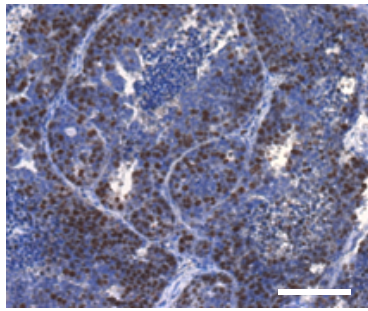
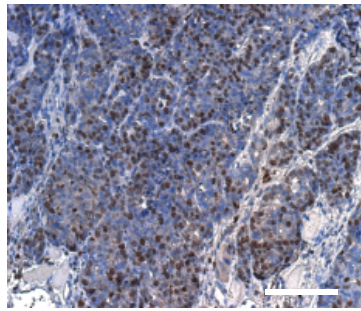


a Ki67 staining

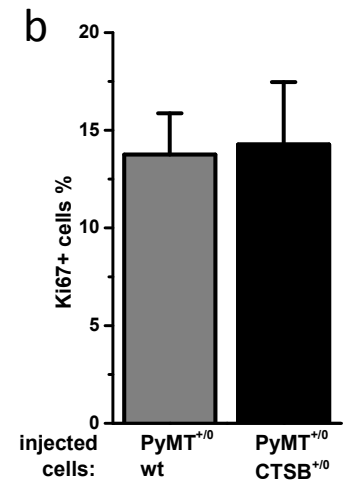


injected cells: PyMT^{+/0};wt

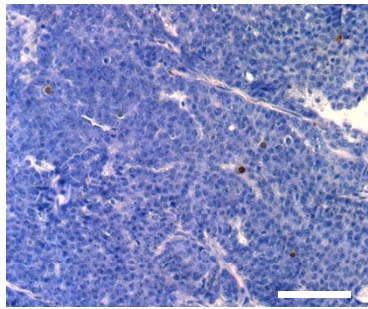


injected cells: PyMT^{+/0};CTSB^{+/0}

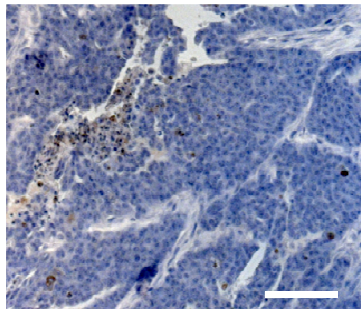
b



c TUNEL staining

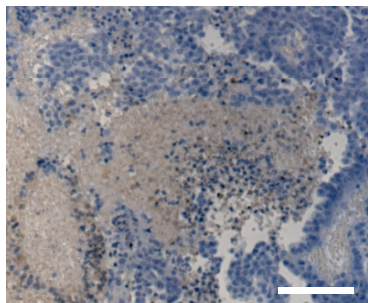


injected cells: PyMT^{+/0};wt

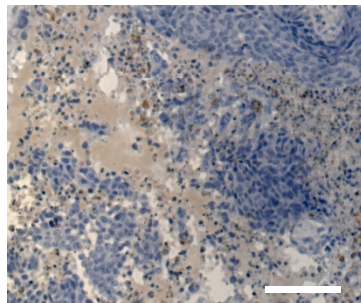


injected cells: PyMT^{+/0};CTSB^{+/0}

d necrotic area

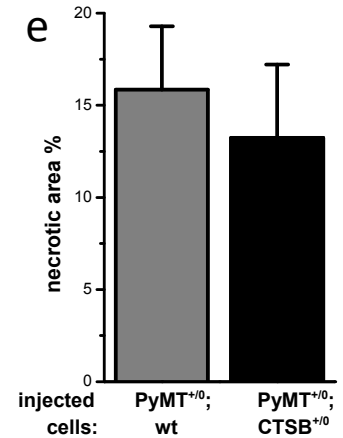


injected cells: PyMT^{+/0};wt



injected cells: PyMT^{+/0};CTSB^{+/0}

e



Supplementary figure 2. Quantitative histologic analyses of tumors derived from orthotopic transplantation of PyMT tumor cells. *a*, Ki67 peroxidase staining on tumor paraffin section for detection of proliferating cells and *b*, quantitation of Ki67+ cells. *c*, Terminal deoxynucleotidyl transferase dUTP nick end labeling (TUNEL) peroxidase staining on tumor paraffin section for detection of apoptotic cells. *d*, necrotic areas in hematoxylin stained sections and *e*, quantitation of necrotic area.