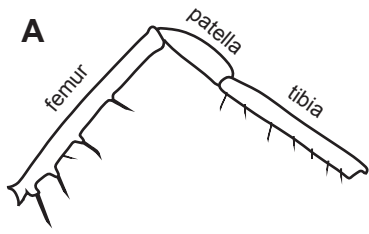
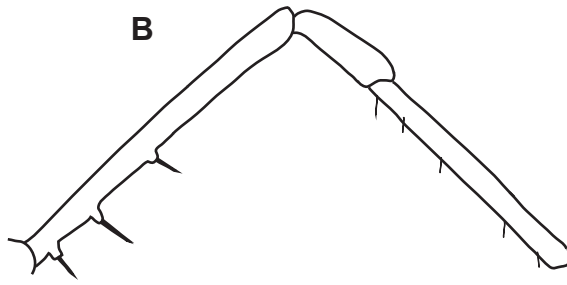


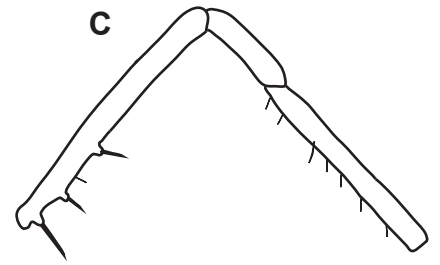
Comparative leg I morphology



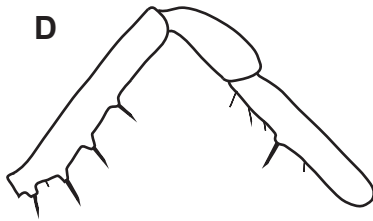
A
caviacolens
(Lewis and Clark Caverns) morph_3



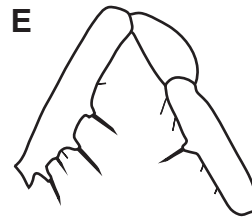
B
ungulatus
(Model Cave) morph_10



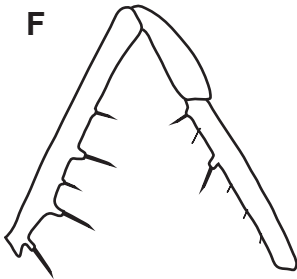
C
madhousesensis
(North Madhouse Cave) morph_18, OP240



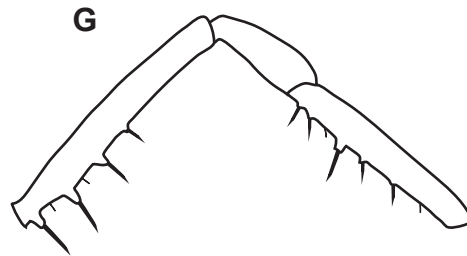
D
nondimorphicus
(Iron Creek) morph_74



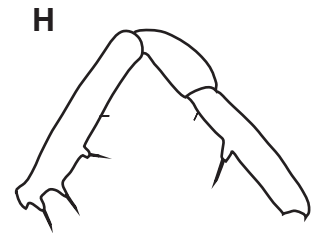
E
idahoensis
(Hobo Cedar Grove) morph_59



F
speoventus
(Cave of the Winds), morph_6



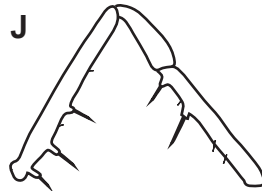
G
steinmanni
female paratype
(Mallory Cave), morph_12F



H
robustus
(Apex Valley Road), morph_32



I
glorietus
(Glorieta Canyon), morph_45



J
klomax
female paratype
(Taos Ski Valley), morph_8F



K
jemez
male paratype
(Terrero Cave), morph_54



L
skywalkeri
male paratype
(Manzano Mtns.), morph_48

All drawings to same scale

1 mm