

Supplemental Data

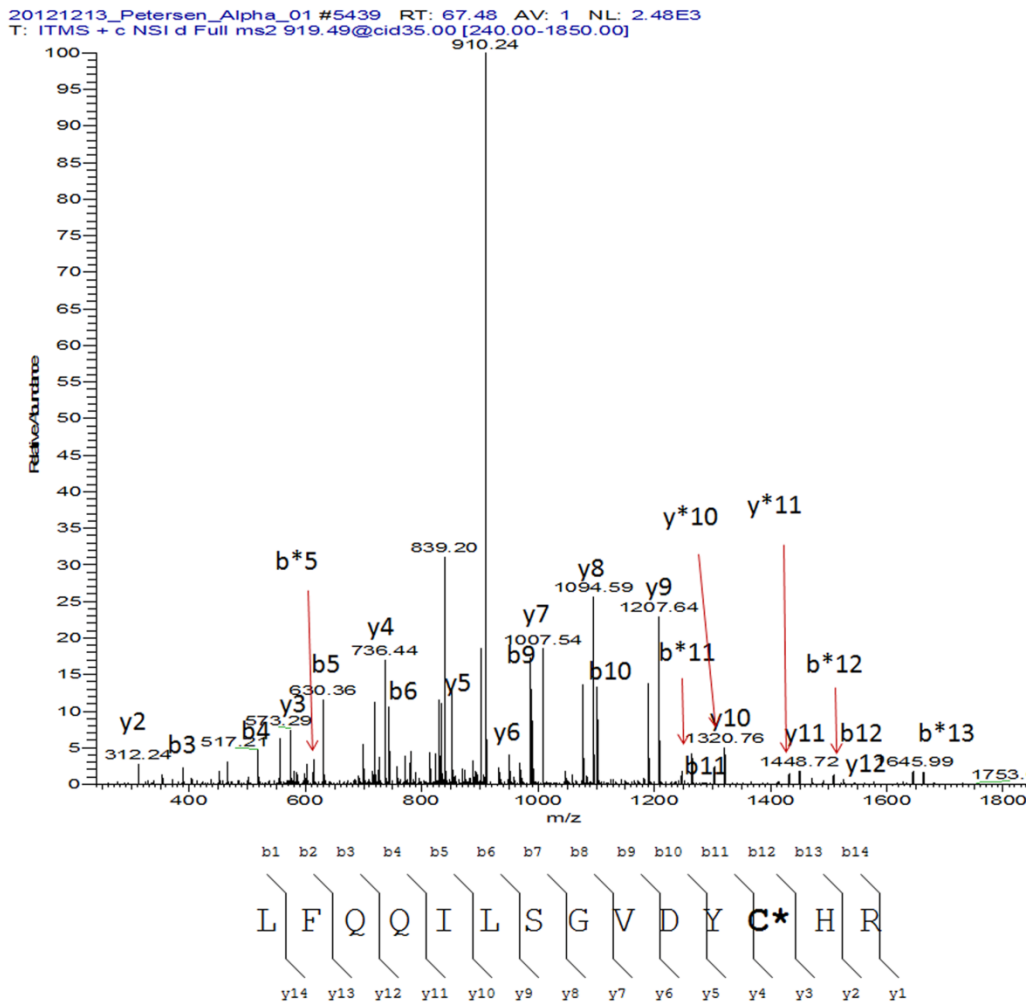
Figure legends:

Supplemental Table 1. Peptides identified from tryptic digests of 4-HNE treated rAMPK α . 10 micrograms of rAMPK α was treated with 4-HNE (molar ratio 5:1), trypsin digested and analyzed using LC/MS as described in Methods. Peptides containing a 4-HNE adducts are in bold with * denoting specific residues modified.

Supplemental Figure 1. Identification of 4-HNE modified rAMPK α/β at residue Cys¹³⁰, Cys¹⁷⁴, Cys²²⁷ and Cys³⁰⁴, Cys²²⁵ using LC/MS/MS analysis. (A) 4-HNE modified peptide containing Cys¹³⁰ (+158), MS/MS analysis was performed and the resulting b/y ion fragmentation confirmed peptide identity (LFQQILSGVDYC*HR). (B) 4-HNE modified peptide containing Cys¹⁷⁴ (+158), MS/MS analysis was performed and the resulting b/y ion fragmentation confirmed peptide identity (TSC*GSPNYAAPEVISGR). (C) 4-HNE modified peptide containing Cys²²⁷ (+158), MS/MS analysis was performed and the resulting b/y ion fragmentation confirmed peptide identity (IC*DGIFYTPQYLNPSVISLLK). (D) 4-HNE modified peptide containing Cys³⁰⁴ (+158), MS/MS analysis was performed and the resulting b/y ion fragmentation confirmed peptide identity (FEC*SEEEVLSCLYNR). (E) 4-HNE modified peptide containing Cys²²⁵ (+158), MS/MS analysis was performed and the resulting b/y ion fragmentation confirmed peptide identity (DTGISC*DPALLPEPNHVMLNHLYALSIK).

Supplementary Figure 1A

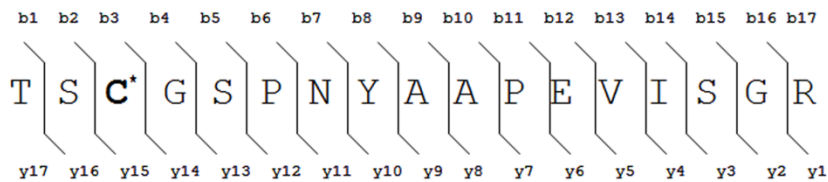
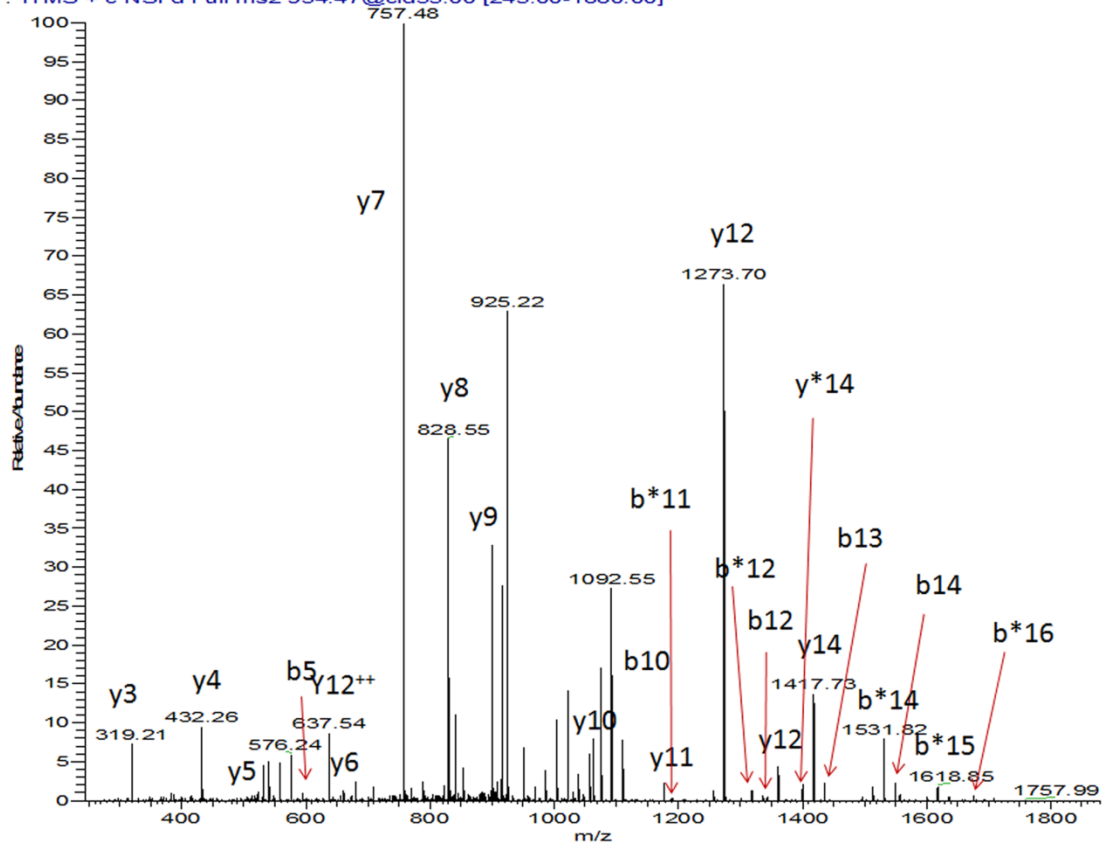
Cys130



Supplementary Figure 1B

Cys174

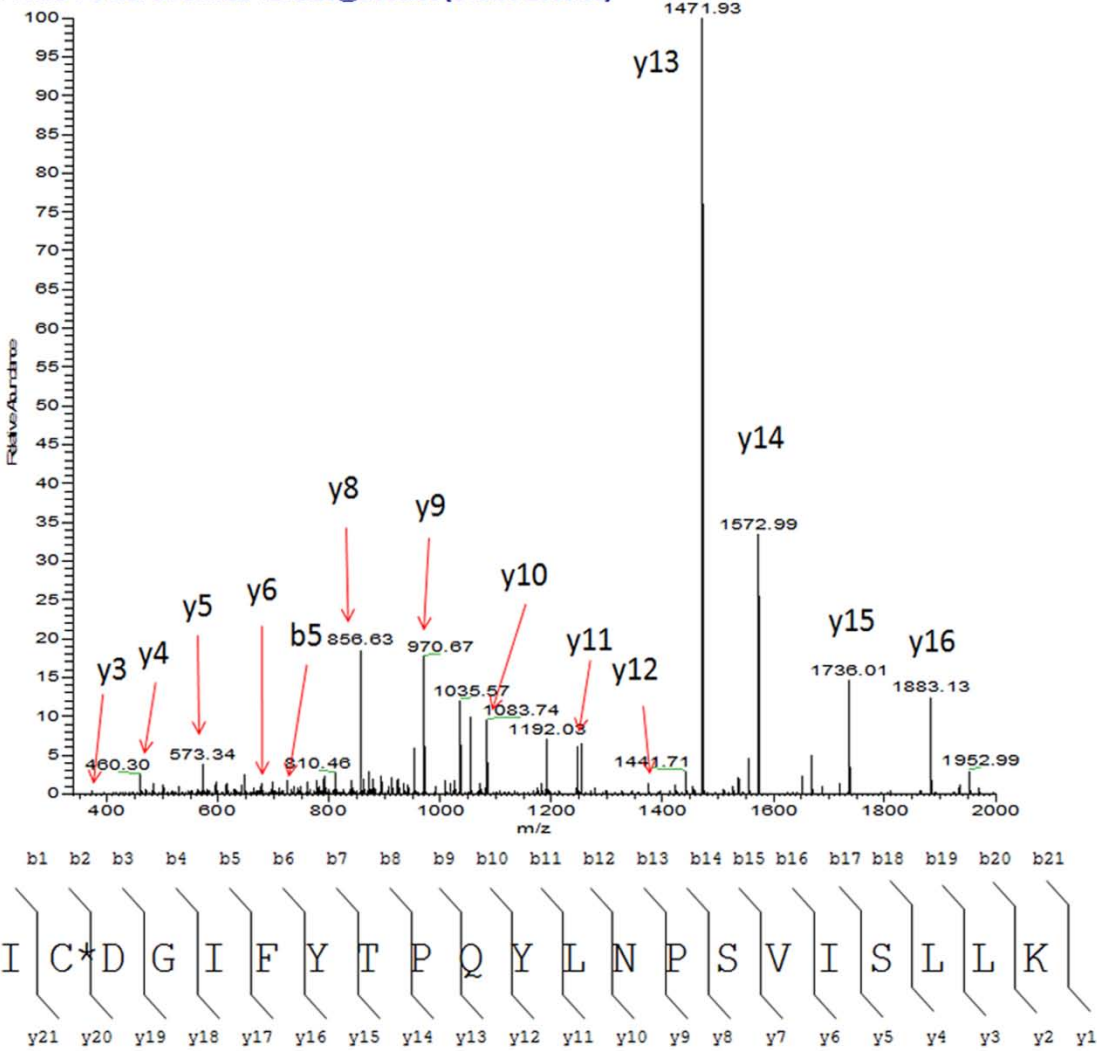
20121213 Petersen Alpha 01 #3901 RT: 48.56 AV: 1 NL: 7.85E3
 T: ITMS + c NSI d Full ms2 934.47@cid35.00 [245.00-1880.00]



Supplemental Figure 1c

Cys227

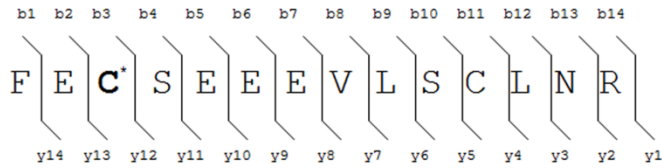
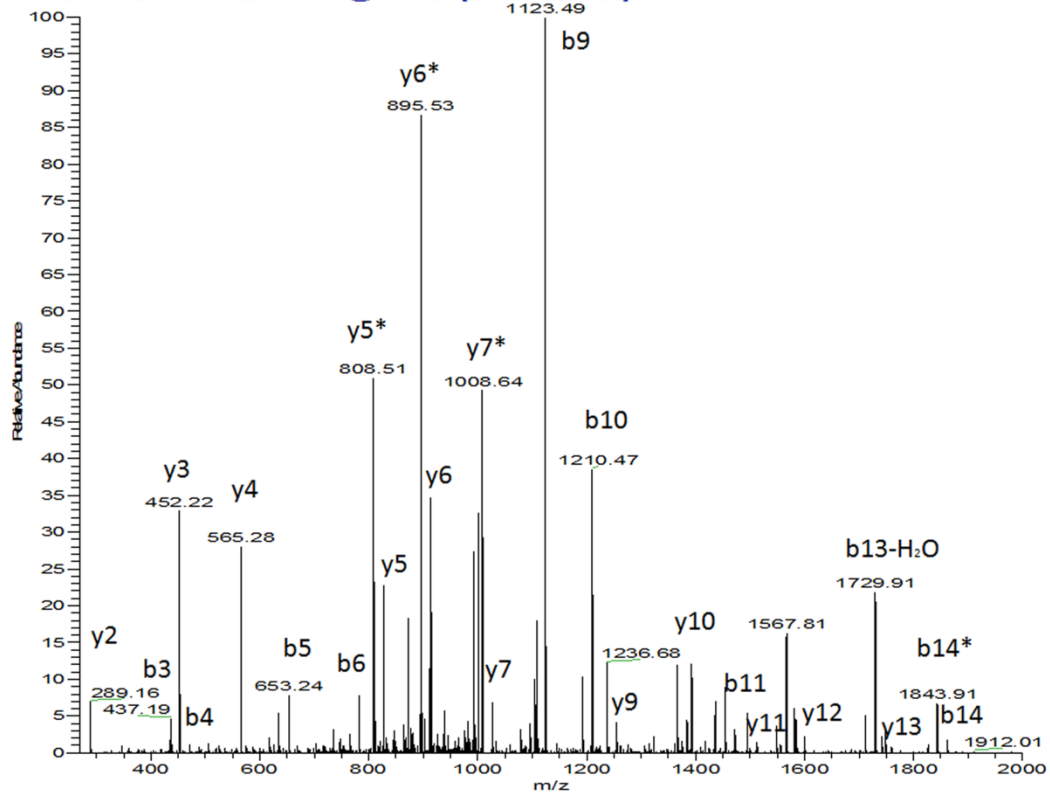
20121213_Petersen_Alpha_01#6529 RT: 81.05 AV: 1 NL: 2.40E3
 T: ITMS + c NSI d Full ms2 1272.20@cid35.00 [340.00-2000.00]



Supplementary Figure 1d

Cys304

20121213_Petersen_Alpha_01 #5914 RT: 73.48 AV: 1 NL: 1.02E3
 T: ITMS + c NSI d Full ms2 1018.97@cid35.00 [270.00-2000.00]



Supplemental Figure 1E.

Cys 225 AMPK β

