

**Relationship between melatonin receptor 1B and insulin receptor
substrate 1 polymorphisms with gestational diabetes mellitus: a
systematic review and meta-analysis**

Yan Zhang^{1#}, Cheng-Ming Sun^{2#}, Xiang-Qin Hu³, Yue Zhao^{1*}

1. School of Nursing, Tianjin Medical University, Tianjin, 300070, P.R., China.

2. Department of Clinical Laboratory, Yuhuangding Hospital, Yantai, 264000, P.R., China.

3. Tianjin Central Hospital of Gynecology and Obstetrics, Tianjin, 300100, P.R., China.

#Contributed equally to this study

*Corresponding Author: Yue ZHAO

Yue ZHAO, PhD, Professor, School of Nursing, Tianjin Medical University, 22 Qixiangtai Road,
Heping District, Tianjin 300070, P.R., China.

Tel: +86-22-83336590

Fax: +86-22-83336900.

Email: yuezhao_1@163.com

Table S1 Meta-analysis of genetic polymorphisms in GDM

	Fixed-effects model				Random-effects model			
	OR (95% CI)	P-value	P-H	I ²	OR (95% CI)	P-value	P-H	I ²
MTNR1B rs10830963 (C/G)								
G vs. C	1.24 (1.14, 1.35)	<0.00001	0.10	48%	1.27 (1.12, 1.45)	0.0003	0.10	48%
GG vs. CC	1.53 (1.30, 1.80)	<0.00001	0.19	35%	1.57 (1.25, 1.97)	<0.0001	0.19	35%
GG+GC vs. CC	1.30 (1.14, 1.47)	<0.0001	0.39	3%	1.30 (1.14, 1.48)	<0.0001	0.39	3%
GG vs. GC+CC	1.37 (1.19, 1.57)	<0.0001	0.13	44%	1.42 (1.14, 1.76)	0.002	0.13	44%
MTNR1B rs1387153 (C/T)								
T vs. C	1.26 (1.12, 1.43)	0.0002	0.74	0%	1.26 (1.12, 1.43)	0.0002	0.74	0%
TT vs. CC	1.56 (1.23, 1.99)	0.0003	0.87	0%	1.56 (1.23, 1.99)	0.0003	0.87	0%
TT+TC vs. CC	1.33 (1.10, 1.61)	0.003	0.51	0%	1.33 (1.10, 1.61)	0.003	0.51	0%
TT vs. TC+CC	1.36 (1.11, 1.68)	0.003	0.88	0%	1.36 (1.11, 1.68)	0.003	0.88	0%
IRS1 rs1801278 (C/T)								
T vs. C	1.42 (1.15, 1.75)	0.001	0.09	50%	1.53 (1.98, 2.15)	0.02	0.09	50%
TT vs. CC	3.82 (1.70, 8.55)	0.001	0.54	0%	3.40 (1.48, 7.83)	0.004	0.54	0%
TT+TC vs. CC	1.36 (1.08, 1.72)	0.009	0.05	57%	1.54 (1.02, 2.32)	0.04	0.05	57%
TT vs. TC+CC	3.01 (1.38, 6.56)	0.006	0.38	2%	2.69 (1.16, 6.26)	0.02	0.38	2%
P-H, P-heterogeneity								

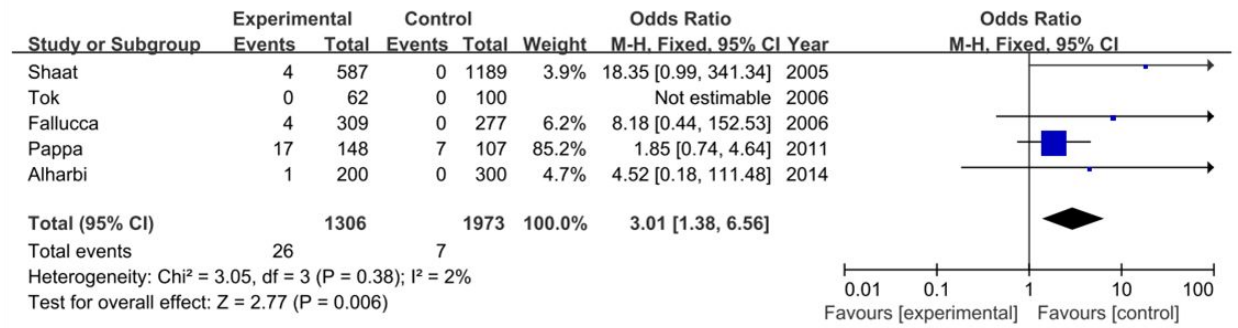


Fig.S1 Meta-analysis of the association between recessive model (TT vs. TC+CC) of IRS1 rs1801278 polymorphism and risk for GDM

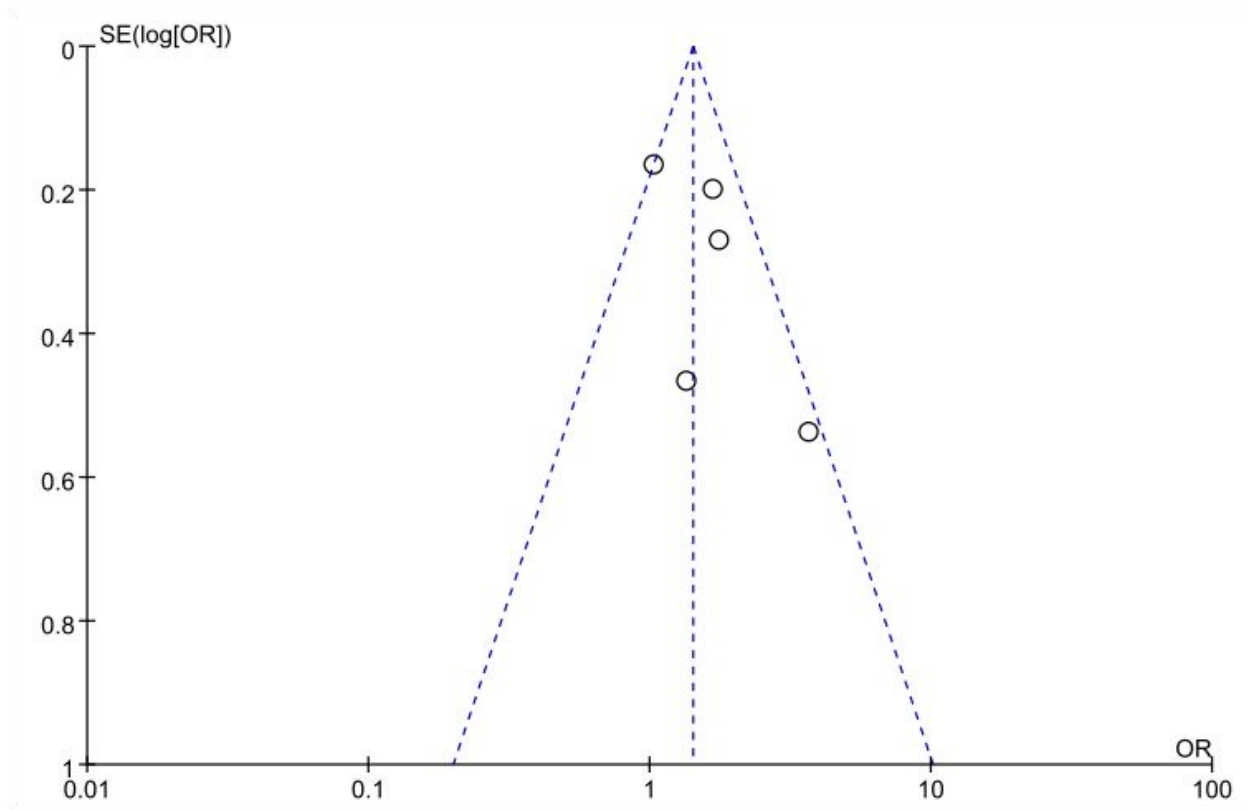


Fig.S2 Funnel plot on the association for allelic model (T vs. C) of IRS1 rs1801278 and GDM risk in a fixed-effects model (P=0.149 for Egger's test)